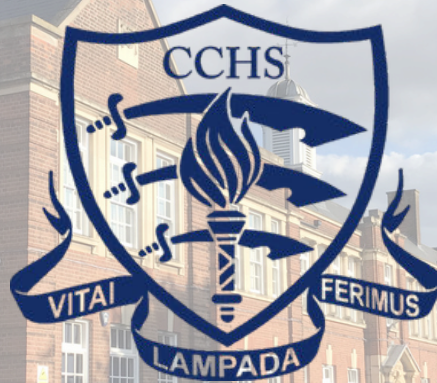


CCHS Laudatio

5th June 2026



Founded 1907

A leading academic school community,
inspired to excellence in education and opportunity for girls

MESSAGE FROM MR LAWLOR

This week, we held our Welcome Meetings with the girls who will be joining us in Year 7 come September. These are significant occasions for the girls and their families as they begin their preparations for the transition to secondary school, with all the opportunities that await them here at CCHS.

Indeed, the start of a seven-year journey at CCHS heralds a wealth of experiences, with specialist subject lessons, enrichment days, extra-curricular clubs & societies, the House system, educational trips, the Dance Show, Music Concerts, the School Theatrical Production, and so much more. From a school staff perspective, seeing in the next cohort of students is simply joyous.

Across this year, we have referred to the 120th anniversary of the first girls to study at CCHS, starting in 1906, before the school was formally opened in May 1907. Focusing on that bigger picture of the school's history, development and place now, we are mindful of both our responsibility and privilege to be the guardians of this quite wonderful inheritance.

Indeed, for current students the second part of the Summer Term will bring with it a series of opportunities, including an Enrichment Day, Prizegiving Afternoons, educational trips, the Cabaret Concert, Sports Day and the Senior Prefect Summer Event. As we begin this final phase of the academic year, I thank all members of the CCHS community for the work and support that will, as ever, distinguish life in our school.



CCHS Values

CITIZENSHIP

Inspire future citizens to think for themselves and to act for others. (Amplification of School Vision: 'Developing the leaders of tomorrow')



DISTINCTION

Students will be provided with an outstanding education and we expect them to do their best in all endeavours. (Amplification of School Aim 1: 'The pursuit of excellence')



CHALLENGE

Students will be stimulated to acquire new knowledge & understanding and motivated to develop new skills & attributes. (Amplification of School Aim 2: 'Fulfilling individual potential')



DUTY

Students will conduct themselves with civility and compassion at all times, supporting each other and looking beyond themselves. (Amplification of School Aim 3: 'Contributing to the community')

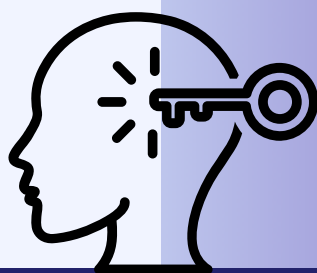
IMAGINATION

Enable students to explore new ideas and empathise with the thinking of others, without limitation or risk. (English, Sport and Arts subjects)



ENLIGHTENMENT

Equip students with the insight and determination to embrace new ideas, technology and innovation, enabling them to contribute to the ever-changing natural and physical world around them. (Mathematics, Computer Science and Natural Sciences subjects)



DIVERSITY

Provide students with the tools to respect and celebrate the great diversity of cultures, backgrounds and beliefs, within and beyond the School, whilst recognising that we have more in common than that which divides us. (Humanities, Languages and Social Sciences subjects)



D e s i d e r a t a

G O P L A C I D L Y amid the noise

and the haste, and remember what peace there may be in silence. As far as possible, without surrender, be on good terms with all persons. Speak your truth quietly and clearly; and listen to others, even to the dull and the ignorant; they too have their story.

Avoid loud and aggressive persons; they are vexatious to the spirit. If you compare yourself with others, you may become vain or bitter, for always there will be greater and lesser persons than yourself.

Enjoy your achievements as well as your plans. Keep interested in your own career, however humble; it is a real possession in the changing fortunes of time.

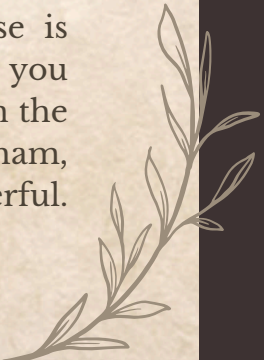
Exercise caution in your business affairs, for the world is full of trickery. But let this not blind you to what virtue there is; many persons strive for high ideals, and everywhere life is full of heroism. Be yourself. Especially do not feign affection. Neither be cynical about love; for in the face of all aridity and disenchantment, it is as perennial as the grass.

Take kindly the counsel of the years, gracefully surrendering the things of youth. Nurture strength of spirit to shield you in sudden misfortune. But do not distress yourself with dark imaginings. Many fears are born of fatigue and loneliness.

Beyond a wholesome discipline, be gentle with yourself. You are a child of the universe no less than the trees and the stars; you have a right to be here.

And whether or not it is clear to you, no doubt the universe is unfolding as it should. Therefore be at peace with God, whatever you conceive Him to be. And whatever your labors and aspirations, in the noisy confusion of life, keep peace in your soul. With all its sham, drudgery and broken dreams, it is still a beautiful world. Be cheerful. Strive to be happy.

by Max Ehrmann ©1927





Student Achievements

Have you got some news to share?
If so, please email Mrs Gross (jgross@cchs.co.uk) and attach a photo or logo, if applicable.

Hannah, (8G), participated in a badminton tournament organised by St Luke's Indian Orthodox Church, Chelmsford. This is an annual UK-wide badminton tournament for members of the Orthodox Church, with over 100 participants competing across various events, and this was the first time Hannah was eligible to participate. Hannah and her partner achieved 2nd place in the Women's Doubles event.

Well done, Hannah!



Congratulations to Anvesha, whose brilliant entry to the Classical Meme competition run by Oxford University was placed in the top-10 entries in her age group. Her winning submission cleverly plays with the myth of Pandora - well done, Anvesha!

Alyna, 11H, has been named as an Area Winner for the East of England in the Anthea Bell Prize for Young Translators. in the German Level 3 category. Congratulations Alyna!

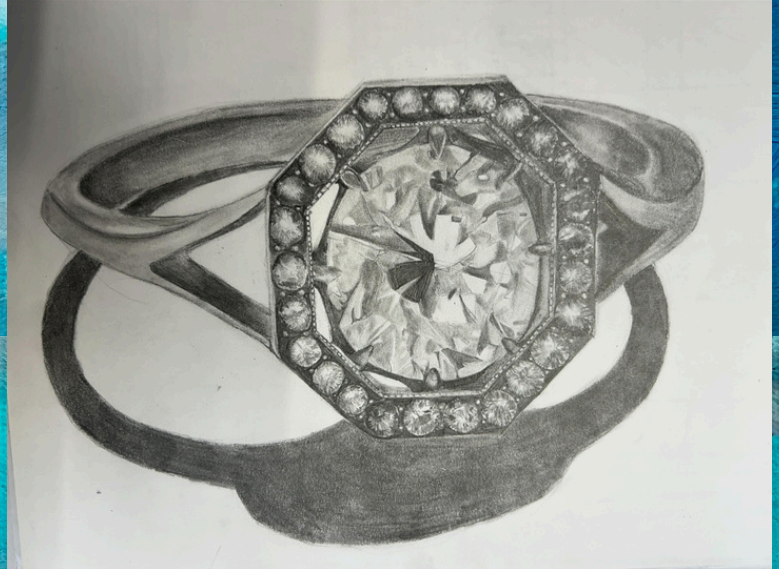


Anthea Bell Prize
for Young Translators



THE QUEEN'S COLLEGE
UNIVERSITY OF OXFORD

Artist of the week



**ARTIST OF THE WEEK- Isla, Rosa and Ariana all in Year 9.
Such fantastic drawing skills. Well done!**



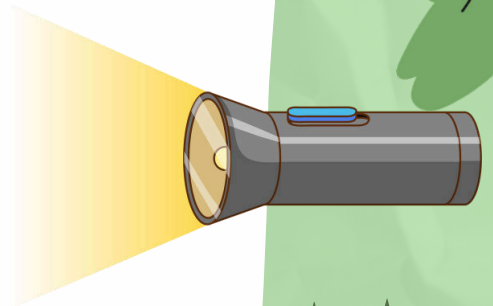
YEAR 13 STUDENTS - PASS IT ON & MAKE A DIFFERENCE!



The Parents Association is collecting good-quality, pre-loved expedition and outdoor equipment to be resold to students preparing for their own DofE journeys.

WHAT WE'D LOVE:

- RUCKSACKS
- WALKING BOOTS
- HOODED JACKETS
- OVER TROUSERS
- SLEEPING MATS
- TORCHES
- COMPASSES
- WHISTLES
- CAMPING UTENSILS
- OTHER ESSENTIALS



Please bring your items into school reception ASAP so they can be prepared for resale at a future event. Your donation will help the PA raise funds to support enrichment activities, events and resources that benefit other CCHS students.

THANK YOU!












TOO GOOD TO THROW AWAY

Do you have study resources gathering dust at home?

CCHS Parents Association is collecting good-quality educational equipment & resources to be resold within our school community.

WHAT WE'D LOVE:

-  Scientific Calculators
-  Maths Sets & Geometry Equipment
-  Art Supplies
-  Language Dictionaries
-  Atlases & Geography Resources
-  KS3 study guides (suitable for years 7-9 only)
-  Music Books & Accessories

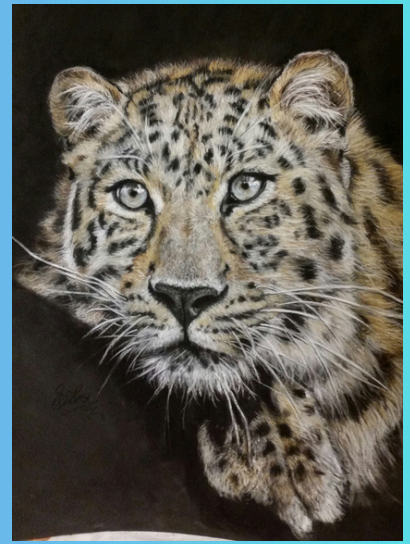
Pass on resources you no longer need and help support the next generation of CCHS students while raising valuable funds.

HOW TO DONATE:

Please bring your items to the school reception before Thursday 11th June, so we can offer them for sale at the Pre-Loved Uniform Sale on 13th June.



THANK YOU!



WIN A PASTEL PORTRAIT



OF YOUR FAVOURITE PET, PERSON OR WILD ANIMAL

(WORTH £200)

BY ELAINE READE

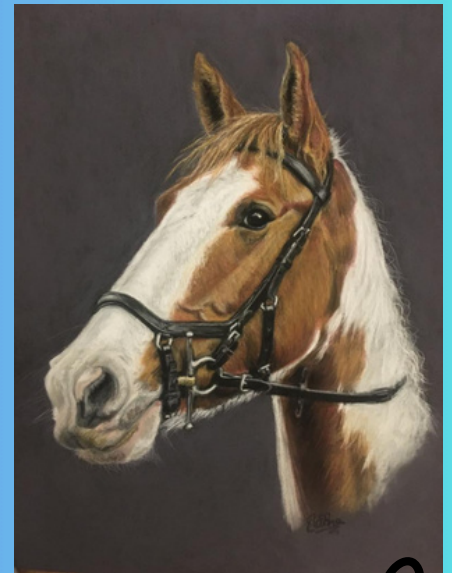


BUY YOUR

£1 RAFFLE TICKETS

BY 9TH JULY

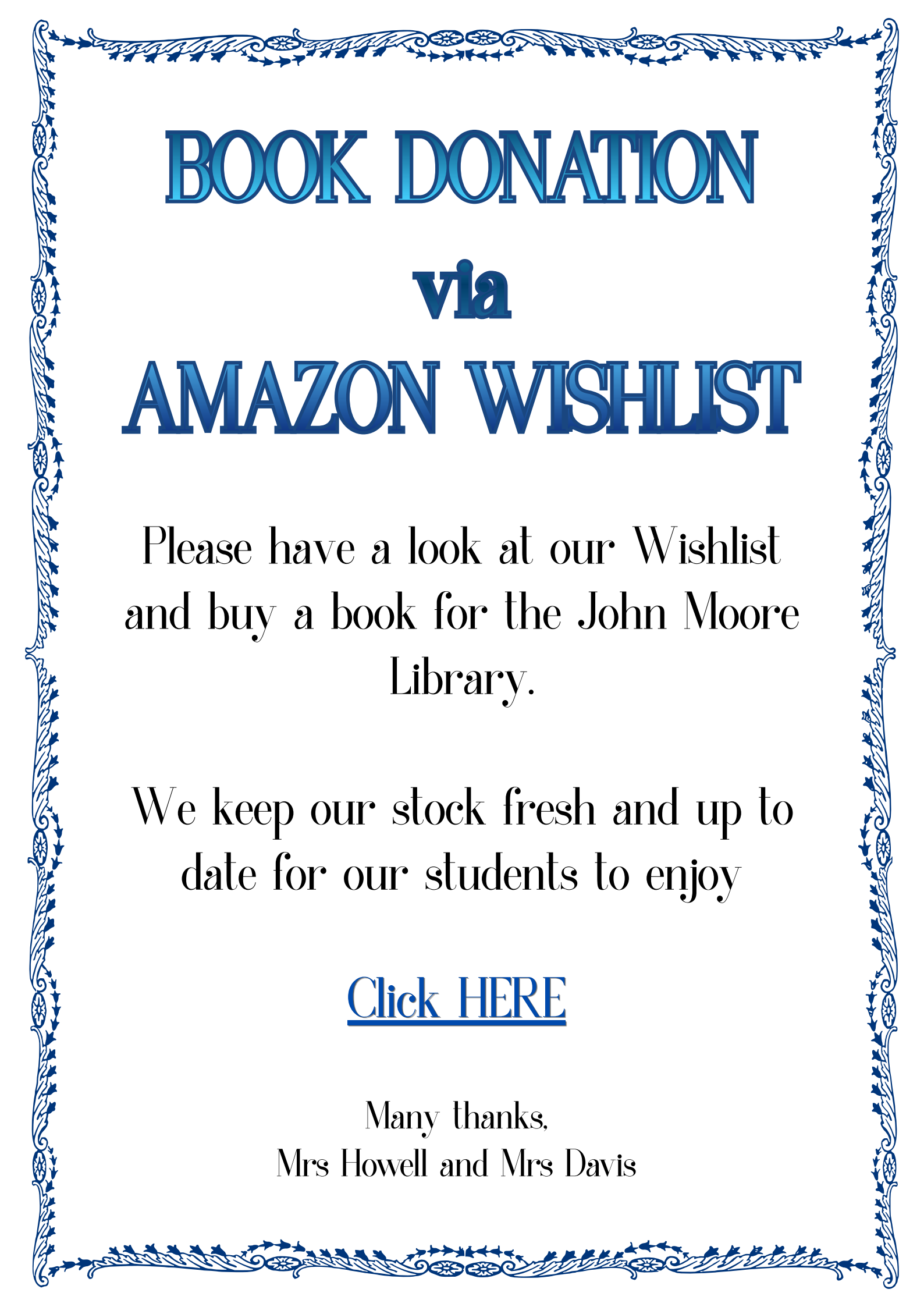
VIA PARENTPAY



THE DRAW WILL TAKE PLACE ON 10TH JULY

ALL MONEY RAISED GOES TO THE PARENTS' ASSOCIATION





BOOK DONATION

via

AMAZON WISHLIST

Please have a look at our Wishlist
and buy a book for the John Moore
Library.

We keep our stock fresh and up to
date for our students to enjoy

[Click HERE](#)

Many thanks,
Mrs Howell and Mrs Davis

CCHS RECOMMENDS

CCHS recommends a recent BBC production on the oceans that surround us and their importance to climate change and its management. Professor Helen Czerski of University College London recently presented *The Climate Question – How do the Oceans Shape our World?* This programme built on her recent book *Blue Machine* and explored how the world's oceans (which cover 70% of the planet's surface) are vital in influencing and regulating weather and climate and how climate change has impacted and may be impacted by the seas around us. The programme can be accessed here

[The Climate Question - How Do the Oceans Shape Our World? - BBC iPlayer](#)



GAIN Trading Challenge 2026

Congratulations to our students who achieved 3rd and 4th place out of 151 teams in the GAIN Trading Challenge 2026. Competing against many other high-performing schools, this outstanding result makes CCHS the top performing centre in the competition.

Over the course of the eight-week challenge, students analysed Next plc, producing both a business report and a video presentation, with support from industry mentors. The programme helped develop key skills in mathematics, business studies and economics.

Congratulations to all students involved on this excellent achievement and thank you to the Economics Department their support in organising this fantastic opportunity for the students.

[Schools Investment Challenge – GAIN UK](#)

POLICY REMINDER

In line with the NHS guidance, it is mandatory that any student experiencing diarrhoea and/or vomiting symptoms remains away from the school setting until they have been symptom-free for 48 hours (the *48-hour rule*) and are feeling well.

This policy helps reduce the spread of contagious illnesses such as stomach bugs (norovirus or rotavirus), which can spread quickly in classrooms.



[Click here for NHS information on this topic](#)

Arrival at and departure from school

We continue to engage with local residents (First Avenue, Corporation Road, Swiss Avenue, Westfield Avenue and Elms Drive) concerning their experiences during student arrival and departure periods.

Further to my communications on this matter previously, I note below key points of information to support CCHS families:

- Chelmsford City Council provided the following about the use of Rectory Lane car park:

“Please be advised there is a standard five-minute grace period on all vehicles to allow the purchase of a pay and display ticket. Therefore, any vehicles that are in the car park for the purposes of dropping off and / or picking up should fall within that grace period.”

- As a result of the concerns raised by local residents regarding instances of inconsiderate and at times dangerous parking, South Essex Parking Partnership noted that their Parking Enforcement Team will be stepping up their patrols in the area.
- Our School Eco Committee is undertaking work, supported by the local authority, to explore how students travel to and from school, and how we could support both school families and the wider community with matters of travel, parking and congestion.
- Our Senior Leadership Team is working with local officials and local politicians on the matter of parking and congestion, and we have made suggestions to support this work, including the idea of creating a new entrance/exit point to the school site on the Chelmer Valley Road (east side of the campus).

Thank you, as ever, for your support in ensuring that we are mindful of local residents, as we work to keep people safe and relations cordial.

.....

Please be aware of your surroundings when dropping off and picking up students to and from school. The area directly outside our school, in Broomfield Road, is a very busy thoroughfare. A vehicle which is not parked safely can be dangerous for other vehicles, as can dropping off/picking up students in the buslane.



ROAD SAFETY

PRIMARY CREATIVE CONFERENCE

Theme: **NATURAL FORMS**

INSPIRE
EXPLORE
CREATE!

WORKSHOP LEADER:

JONATHAN HARVEY-THOMAS

Head of Art & practising artist
based in Chelmsford



MONDAY
29TH JUNE
2026
9.00 – 3.30

**CHELMSFORD
COUNTY HIGH SCHOOL**
Broomfield Road,
Chelmsford,
CM1 1RW

EXPLORE 4 EXCITING PRINTING TECHNIQUES:

MONO
PRINTING



POLY
PRINTING



LINO
PRINTING



GELI
PRINTING



DESIGNED FOR:

Primary school teachers
and TA's of all experiences
and levels – and anyone
who enjoys making things!
(Limited to two participants
per school)

COURSE OUTCOMES:

- ✓ Practical classroom strategies
- ✓ Take-away booklet, materials & resources to start your projects
- ✓ Discuss key issues in art teaching
- ✓ Help pupils learn more independently, confidently and securely

YOU WILL:

- ★ Gain confidence in delivering contemporary art projects
- ★ Learn new, accessible techniques for all key stages
- ★ Promote questioning, creativity and risk-taking
- ★ Get practical ideas for differentiation and progress
- ★ Take away a step-by-step booklet, materials & resources
- ★ Network with other passionate primary teachers



INCLUDES:

Morning coffee/tea,
delicious lunch
& refreshments



ALL MATERIALS PROVIDED

FREE to
all applicants!



LUNCH DONATION:

£5.00



PLACES LIMITED:

First come,
first served!

FREE
to all applicants
including materials



CLOSING DATE:

Friday 22nd May 2026



APPLY:

e-mail to: jharvey@cchs.co.uk

Our Commitment to Girls' Education

We are proud to be a **founding member of the UK division of the International Coalition of Girls' Schools (ICGS)** – a global organisation dedicated to empowering girls through education and sharing research-based best practices.

The ICGS conducts extensive research into the benefits of an all-girls education, including improved academic outcomes, confidence, and leadership opportunities. These insights help us shape the very best learning environment for your daughter.

Why should parents engage with this research?

By exploring these studies, you can:

- ✓ Understand the proven advantages of an all-girls education.
- ✓ Gain practical strategies to support your daughter's learning journey.
- ✓ Stay informed about global trends and innovations in girls' education.

We regularly update our website with the latest research findings and will continue to share details when new studies are released.

👉 **Discover more here:** <https://www.cchs.co.uk/about-us/girls-education-research/>

Together, we can ensure every student thrives and becomes a leader of tomorrow.

This week in PSHE

YEAR GROUP	TUESDAY 9 th JUNE				PERIOD	2
	A	C	F	G	H	S
7	Careers Lesson pt2 with Dr Hiner					
8	Being yourself – self-esteem lesson					
9	Grief and Bereavement pt2					
10	Awareness of Mental health					Samaritans' visitor
12	UCAS with form tutors					

*Please note that Yr9 will be learning about grief and bereavement straight after the half term holidays for 2 lessons. Obviously as a school, we understand that this is a sensitive issue, although we do believe that this is an important issue to discuss with the students. The lessons are written by the UK bereavement charity – Winston's wish – [Add a little bit of body text](#) and are age-appropriate and deal with this sensitive issue with care and consideration. If you would like any more information, please contact the PSHE coordinator – sbuckley@cchs.co.uk or Head of Year 9 – cburnham@cchs.co.uk

Summer Term Parent Support Series

Free Parent Webinars

*Join us and Elevate Education for FREE
60- minute webinars designed to help you
support your child's studies at home.*

[Click here to Register](#)

In the Summer Term, we'll cover:

**How to Help Your Child Alleviate
Stress** -9th June @6:00pm
(BST)

**How to Get (And Keep!) Your
Child Motivated** -23rd June
@6:00pm (BST)

**How You Can Set Your Child
Up for Success**
-7th July @6:00pm (BST)



CCHS News this week...

YEAR 6 SPORTS PROGRAMME

Posted: 4th June 2026

We look forward to welcoming the girls who will be joining us as our new Year 7 cohort in September to the first of our sports sessions at CCHS this evening. These sessions offer a variety of sports activities, consisting of team games and core skills. They also provide a fantastic opportunity for students to meet their peers ahead of starting in September. Thank you to our P.E. department for arranging this wonderful opportunity.



HIGHER EDUCATION INFORMATION EVENING

Posted: 4th June 2026

We will be holding our online Higher Education Evening today and look forward to welcoming students and their families. Thank you to Mrs Hopkins and Dr Palmer for organising and hosting this important opportunity.

CCHS Aspire: University and Employment - Chelmsford County High School for Girls



ANTHEA BELL PRIZE FOR YOUNG TRANSLATORS, UNIVERSITY OF OXFORD

Posted: 4th June 2026

We are thrilled that Alyna, Year 11, has been awarded Area Winner (East) of the German Level 3 Prize for her entry to the Anthea Bell Prize for Young Translators, a national competition run by the Queen's College Translation Exchange at the University of Oxford. As the University notes, "over 25,000 students participated in the competition in 2026...so this is a fantastic achievement". Many congratulations to Alyna on her success!

Thank you to Mrs Cannon and Mrs Gilbert for their invaluable support in preparing students for this wonderful competition.



Anthea Bell Prize
for Young Translators

NEW INTAKE WELCOME MEETINGS

Posted: 4th June 2026

We're looking forward to welcoming the girls who will be joining us as our new Year 7 cohort in September, at our welcome meetings taking place today and tomorrow.

Leaders of Tomorrow - Chelmsford County High School for Girls



REGIONAL ATHLETICS FINAL

Posted: 5th June 2026

All the best to our Year 7 and Year 8 students taking part in the final of the Regional Athletics competition today!

Sports - Chelmsford County High School for Girls



ART EXHIBITION

Posted: 5th June 2026

We are looking forward to the CCHS Art Exhibition this evening. What a privilege it is for us to view the brilliant work of our student artists. Many congratulations to the students and thank you to our Art Department.

The Arts - Chelmsford County High School for Girls



YEAR 10 HISTORY TRIP TO THE GLOBE THEATRE AND THE GOLDEN HINDE

Posted: 5th June 2026

We are looking forward to our Year 10 History trip to The Globe Theatre and The Golden Hind today.

Educational Trips and Visits - Chelmsford County High School for Girls



SEASONAL
SALE



ADVENTURE ISLAND

ORDER NOW ON PARENTPAY

Order via ParentPay. Vouchers available for collection from the Finance Office following purchase. Limited availability whilst stocks last. Vouchers non-refundable.

**FLASH
SALE**

Just £18 each!
(Only til end of May).



CCHS
Parents' Association



CCHS PA IS A REGISTERED CHARITY, UK CHARITY #287962.



Instrumental and Vocal lessons 2026-27

Now is time to apply if you would like your daughter to have instrumental and/or vocal lessons for next academic year.

If they are already having lessons, you need to re-apply to continue having them next year

Everyone can apply, even if they have not had lessons before, and subject to space we will do our best to accommodate your request

Don't delay, apply today!

Please check the SchoolPost sent to all parents on **22nd May 2026**, which includes full details and the online application form

The deadline to apply is Monday 22nd June 2026

BARRACUDAS

ACTIVITY DAY CAMPS

HIGHLY RATED
School Holiday
Camps!!!



SCAN ME!

AVAILABLE AT
YOUR SCHOOL **2026!**
EXCLUSIVE PARENT DISCOUNT

SEE SCHOOL NEWSLETTER FOR DETAILS!

- ⦿ 4 to 14 year olds!
- ⦿ 80+ Activities!
- ⦿ Choice each session!
- ⦿ Specialist Courses!
- ⦿ Flexible bookings!



OFSTED REGISTERED



barracudas.co.uk
01480 467 567



Help us do more for your daughters – success through community



Success through Community

We are launching the CCHS Foundation¹ as a school community enterprise dedicated to raising funds, through voluntary contributions each year, to provide your daughters with more:

- more resources, including books, journals and websites
- more facilities, including
- ICT infrastructure and digital learning devices
- and more opportunities, including
- enrichment activities and educational visits

How to contribute financially towards the CCHS Foundation:

1. Set up a Regular payment by Standing Order with your Bank

This provides the Foundation with a regular income to allow us to plan ahead more effectively, and can be set to a payment amount, frequency and date to suit you. Please contact the school at finance@cchs.co.uk for our bank details.

2. Payment via ParentPay

You should find a payment item assigned to your daughter on ParentPay entitled 'Donate to CCHS Foundation'. Payment may be made via debit or credit card, and the amount can be edited to suit your wishes. Payments may be made as often as you like to suit your circumstances.

Additional payment items may be available at various times, 'giving days', for donating towards a specific fundraising goal.

3. Gift Aid

However you choose to contribute, if you are a UK tax payer, we can benefit further if you complete a Gift Aid Declaration form. This means that we can reclaim from HMRC any income tax you have paid on your donations to us, at a basic tax rate of 20%. The form can be accessed [here](#).

¹ The CCHS Foundation is not a distinct legal entity but a term we are using for this initiative under CCHS's exempt charitable status as an academy.

Ways to donate towards CCHS Capital projects:

1. TotalGiving

The School has set up an online fundraising page via [TotalGiving](#). This allows you to make regular or single contributions online using a credit or debit card. Gift Aid for eligible donations can also be processed through this route.

2. Giving through an employer scheme:

Payroll Giving

Payroll Giving (also known as ‘Give As You Earn’) is a valuable, long term source of revenue, providing regular income to help charities budget and plan more effectively. Your donation can often be made from your pre-tax income. Please ask your employer about this scheme.

As an academy, the School is considered to be an exempt charity and as such does not need to register with the Charity Commission. However, our charitable status is registered with HMRC. ‘Chelmsford County High School for Girls’ should be used as the reference on the payroll giving paperwork.

Company Gifts & Matched Funding

Some companies operate schemes allowing employees to nominate a charity for a company donation. This is often under a ‘matched funding’ programme whereby a company will match the donation made by the employee to their chosen charity. Please ask your employer about this scheme.

3. CAF Giving – more details

The Charities Aid Foundation (CAF) makes giving to charity easy. Through CAF, the value of your donation is increased via tax relief, and you have the option to donate anonymously.

4. Set up a regular payment by Standing Order with your Bank

This provides the School with a regular income to allow us to plan more effectively, and can be set to a payment amount, frequency and date to suit you. Please contact the school at finance@cchs.co.uk for our bank details.

5. Payment via ParentPay

You should find a payment item assigned to your daughter on [ParentPay](#) entitled ‘CCHS Buildings Appeal’. Payment may be made via debit or credit card, and the amount can be edited to suit your wishes. Payments may be made as often as you like to suit your circumstances.

Help us do more for your daughters – success through community

6. Gift Aid

Should you choose to contribute via bank standing order or ParentPay, if you are a UK tax payer we can benefit further if you complete a Gift Aid Declaration form. This means that we can reclaim from HMRC any income tax you have paid on your donations to us, at a basic tax rate of 20%. The form can be accessed [here](#).

Leaving a Legacy Please consider leaving the School a legacy in your will. If you leave a gift to a charity such as CCHS, its value will be deducted from your estate (your money, possessions and property) before Inheritance Tax is calculated.

Thank you, in advance, for any support you can provide to the students of CCHS

