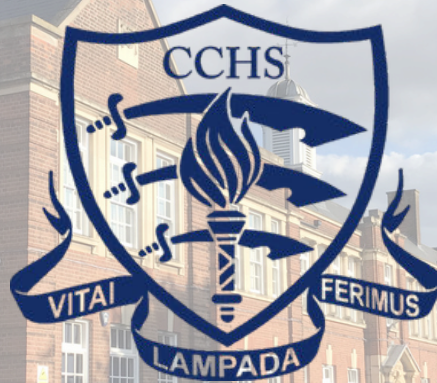


CCHS *Laudatio*

12th June 2026



Founded 1907

A leading academic school community,
inspired to excellence in education and opportunity for girls

MESSAGE FROM MR LAWLOR

With the Government's legislative programme for schools and the education sector more broadly, there is a good deal of reform on the way, including SEND, RSHE, National Curriculum, accountability measures, mobile phones in schools, etc. During moments of significant change it is so important for schools to engage, learn and prepare to ensure students and staff are best served.

In the service of this, members of the senior leadership team have participated in a range of activities recently, including, the Association of Secondary Headteachers in Essex (ASHE) Conference, Successful Selective Girls' Schools (SSGS) Summer Conference and the Grammar Schools Heads Association (GSHA) Conference. These events offer senior staff invaluable opportunities to work with colleagues locally and nationally, learning about the great work taking place in other schools, as well as affording opportunities to share the important work taking place here at CCHS. For example, we recently presented, to colleagues from other grammar schools across England, our work on the CCHS Institute The CCHS Institute - Chelmsford County High School for Girls explaining our motivation for establishing this project and the benefits it is has brought to the school, including building new links with the wonderful CCHS Alumnae.



CCHS Values

CITIZENSHIP

Inspire future citizens to think for themselves and to act for others. (Amplification of School Vision: 'Developing the leaders of tomorrow')



DISTINCTION

Students will be provided with an outstanding education and we expect them to do their best in all endeavours. (Amplification of School Aim 1: 'The pursuit of excellence')



CHALLENGE

Students will be stimulated to acquire new knowledge & understanding and motivated to develop new skills & attributes. (Amplification of School Aim 2: 'Fulfilling individual potential')



DUTY

Students will conduct themselves with civility and compassion at all times, supporting each other and looking beyond themselves. (Amplification of School Aim 3: 'Contributing to the community')

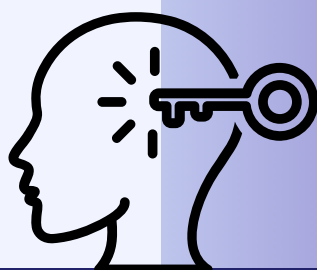
IMAGINATION

Enable students to explore new ideas and empathise with the thinking of others, without limitation or risk. (English, Sport and Arts subjects)



ENLIGHTENMENT

Equip students with the insight and determination to embrace new ideas, technology and innovation, enabling them to contribute to the ever-changing natural and physical world around them. (Mathematics, Computer Science and Natural Sciences subjects)



DIVERSITY

Provide students with the tools to respect and celebrate the great diversity of cultures, backgrounds and beliefs, within and beyond the School, whilst recognising that we have more in common than that which divides us. (Humanities, Languages and Social Sciences subjects)



D e s i d e r a t a

G O P L A C I D L Y amid the noise

and the haste, and remember what peace there may be in silence. As far as possible, without surrender, be on good terms with all persons. Speak your truth quietly and clearly; and listen to others, even to the dull and the ignorant; they too have their story.

Avoid loud and aggressive persons; they are vexatious to the spirit. If you compare yourself with others, you may become vain or bitter, for always there will be greater and lesser persons than yourself.

Enjoy your achievements as well as your plans. Keep interested in your own career, however humble; it is a real possession in the changing fortunes of time.

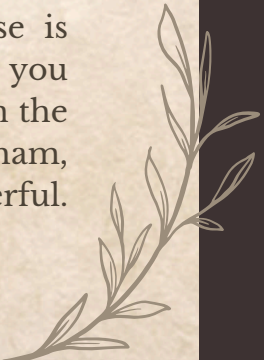
Exercise caution in your business affairs, for the world is full of trickery. But let this not blind you to what virtue there is; many persons strive for high ideals, and everywhere life is full of heroism. Be yourself. Especially do not feign affection. Neither be cynical about love; for in the face of all aridity and disenchantment, it is as perennial as the grass.

Take kindly the counsel of the years, gracefully surrendering the things of youth. Nurture strength of spirit to shield you in sudden misfortune. But do not distress yourself with dark imaginings. Many fears are born of fatigue and loneliness.

Beyond a wholesome discipline, be gentle with yourself. You are a child of the universe no less than the trees and the stars; you have a right to be here.

And whether or not it is clear to you, no doubt the universe is unfolding as it should. Therefore be at peace with God, whatever you conceive Him to be. And whatever your labors and aspirations, in the noisy confusion of life, keep peace in your soul. With all its sham, drudgery and broken dreams, it is still a beautiful world. Be cheerful. Strive to be happy.

by Max Ehrmann ©1927





arts award

Congratulations to the 58 Year 8 students who entered the Arts Award and were successful in achieving their Bronze Arts Award.

Find out more about Arts Award [here](https://www.artsaward.org.uk/site/?id=2735)
<https://www.artsaward.org.uk/site/?id=2735>





ARE YOU A PRACTISING ACCOUNTANT?

We're looking for a **volunteer** Independent Examiner to help CCHS Parents' Association review our annual accounts (year end August 2026). The charity's receipts for the year are expected to be circa £40k and it operates on a receipts and payments basis.

The role is straightforward and **only takes a few days a year**. You'll be helping us ensure our finances are compliant with charity laws, allowing us to focus our time on what we do best: supporting the advancement of the education of the pupils of the school by assisting in the provision of facilities that the school does not have the budget for. If you can spare a little time to help us with this vital task, **we'd love to hear from you**.

CONTACT:

Elaine (PA Chair)

pa@cchs.co.uk

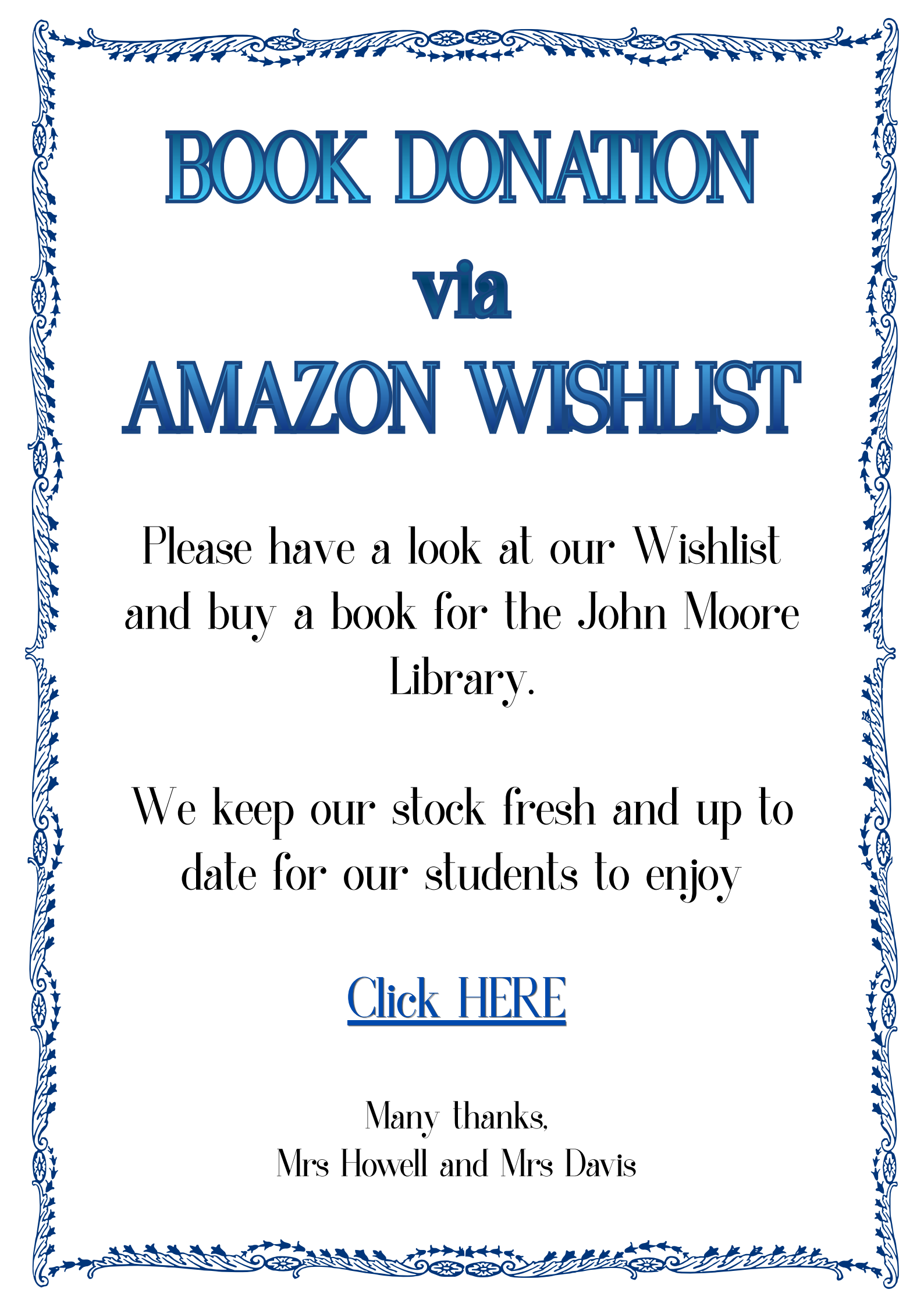
CCHS PA is a registered
charity, UK Charity #287962.



Artist *of the week*



ARTIST OF THE WEEK - Milana in Year 10 for her digital pigeon painting. We love it



BOOK DONATION

via

AMAZON WISHLIST

Please have a look at our Wishlist
and buy a book for the John Moore
Library.

We keep our stock fresh and up to
date for our students to enjoy

[Click HERE](#)

Many thanks,
Mrs Howell and Mrs Davis

CCHS RECOMMENDS

CCHS recommends a recent BBC production on the oceans that surround us and their importance to climate change and its management. Professor Helen Czerski of University College London recently presented *The Climate Question – How do the Oceans Shape our World?* This programme built on her recent book *Blue Machine* and explored how the world's oceans (which cover 70% of the planet's surface) are vital in influencing and regulating weather and climate and how climate change has impacted and may be impacted by the seas around us. The programme can be accessed here

[The Climate Question - How Do the Oceans Shape Our World? - BBC iPlayer](#)



GAIN Trading Challenge 2026

Congratulations to our students who achieved 3rd and 4th place out of 151 teams in the GAIN Trading Challenge 2026. Competing against many other high-performing schools, this outstanding result makes CCHS the top performing centre in the competition.

Over the course of the eight-week challenge, students analysed Next plc, producing both a business report and a video presentation, with support from industry mentors. The programme helped develop key skills in mathematics, business studies and economics.

Congratulations to all students involved on this excellent achievement and thank you to the Economics Department their support in organising this fantastic opportunity for the students.

[Schools Investment Challenge – GAIN UK](#)

POLICY REMINDER

In line with the NHS guidance, it is mandatory that any student experiencing diarrhoea and/or vomiting symptoms remains away from the school setting until they have been symptom-free for 48 hours (the *48-hour rule*) and are feeling well.

This policy helps reduce the spread of contagious illnesses such as stomach bugs (norovirus or rotavirus), which can spread quickly in classrooms.



[Click here for NHS information on this topic](#)

Arrival at and departure from school

We continue to engage with local residents (First Avenue, Corporation Road, Swiss Avenue, Westfield Avenue and Elms Drive) concerning their experiences during student arrival and departure periods.

Further to my communications on this matter previously, I note below key points of information to support CCHS families:

- Chelmsford City Council provided the following about the use of Rectory Lane car park:

“Please be advised there is a standard five-minute grace period on all vehicles to allow the purchase of a pay and display ticket. Therefore, any vehicles that are in the car park for the purposes of dropping off and / or picking up should fall within that grace period.”

- As a result of the concerns raised by local residents regarding instances of inconsiderate and at times dangerous parking, South Essex Parking Partnership noted that their Parking Enforcement Team will be stepping up their patrols in the area.
- Our School Eco Committee is undertaking work, supported by the local authority, to explore how students travel to and from school, and how we could support both school families and the wider community with matters of travel, parking and congestion.
- Our Senior Leadership Team is working with local officials and local politicians on the matter of parking and congestion, and we have made suggestions to support this work, including the idea of creating a new entrance/exit point to the school site on the Chelmer Valley Road (east side of the campus).

Thank you, as ever, for your support in ensuring that we are mindful of local residents, as we work to keep people safe and relations cordial.

Please be aware of your surroundings when dropping off and picking up students to and from school. The area directly outside our school, in Broomfield Road, is a very busy thoroughfare. A vehicle which is not parked safely can be dangerous for other vehicles, as can dropping off/picking up students in the buslane.



ROAD SAFETY



CCHS PA IS A REGISTERED CHARITY, UK CHARITY #287962.



The full experience of Adventure Island ... at a lower price

Exclusive CCHS PA price



Why you'll love it:

- Enjoy £8 off the usual £28 gate price
- Valid throughout the 2026 season
- Each voucher = a wristband for a full day of fun!

ORDER NOW ON PARENTPAY

How to get your reduced price wristbands:

Order via ParentPay. Vouchers will be available for collection from the Finance Office the week following purchase.

We have limited availability, so once they're gone, they're gone. 😊 Vouchers are non-refundable.



adventureisland.co.uk

Our Commitment to Girls' Education

We are proud to be a **founding member of the UK division of the International Coalition of Girls' Schools (ICGS)** – a global organisation dedicated to empowering girls through education and sharing research-based best practices.

The ICGS conducts extensive research into the benefits of an all-girls education, including improved academic outcomes, confidence, and leadership opportunities. These insights help us shape the very best learning environment for your daughter.

Why should parents engage with this research?

By exploring these studies, you can:

- ✓ Understand the proven advantages of an all-girls education.
- ✓ Gain practical strategies to support your daughter's learning journey.
- ✓ Stay informed about global trends and innovations in girls' education.

We regularly update our website with the latest research findings and will continue to share details when new studies are released.

👉 **Discover more here:** <https://www.cchs.co.uk/about-us/girls-education-research/>

Together, we can ensure every student thrives and becomes a leader of tomorrow.

This week in PSHE

YEAR GROUP	WEDNESDAY 17 TH JUNE				PERIOD	1
	A	C	F	G	H	S
7	Understanding mental health issues					
8	Trip to Bletchley Park – No RTP session.					
9	Revision skills & personal revision for exams next week.					
10	Modernising elections: Votes at 16					
12	UCAS with form tutors					

Summer Term Parent Support Series

Free Parent Webinars

*Join us and Elevate Education for FREE
60- minute webinars designed to help you
support your child's studies at home.*

[Click here to Register](#)

In the Summer Term, we'll cover:

**How to Get (And Keep!) Your
Child Motivated -23rd June
@6:00pm (BST)**

**How You Can Set Your Child
Up for Success
-7th July @6:00pm (BST)**



CCHS News this week...

PRE-LOVED UNIFORM EVENT

Posted: 12th June 2026

The CCHS Parents' Association is hosting a pre-loved uniform event on Saturday 13th June from 11am to 1pm, taking place in the Languages Foyer and the Year 12 Common Room. This is a great opportunity for families to purchase quality second-hand uniform at affordable prices. Thank you to the Parents' Association for organising this event.



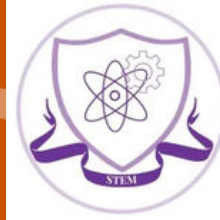
CAMBRIDGE CHEMISTRY CHALLENGE

Posted: 12th June 2026

Good luck to all our students who are participating in the Cambridge Chemistry Challenge today!

About | Cambridge Chemistry Challenge

STEM & STEAM - Chelmsford County High School for Girls



MESSA TENNIS

Posted: 9th June 2026

All the best to our Year 9 students who are competing in the MESSA tennis competition today!

Sports - Chelmsford County High School for Girls



U13 MESSA TENNIS

Posted: 9th June 2026

All the best to our Year 7 and Year 8 students who are competing in the U13 MESSA tennis competition today!

Sports - Chelmsford County High School for Girls



U15 ESSEX CUP CRICKET

Posted: 11th June 2026

Wishing the CCHS team the best of luck as they compete in the U15 Essex Cup cricket match today!

Sports - Chelmsford County High School for Girls



U15 ESSEX CUP CRICKET

Posted: 10th June 2026

Wishing the CCHS team the best of luck as they compete in the U15 Essex Cup cricket match today!

Sports - Chelmsford County High School for Girls



REGIONAL ATHLETICS FINAL

Posted: 9th June 2026

Best of luck to our Year 9 and Year 10 students taking part in the Regional Athletics Final today!
Sports - Chelmsford County High School for Girls



MATHS COMPETITIONS

Posted: 9th June 2026

Good luck to all our students who are participating in the Junior Maths Kangaroo and the British Mathematical Olympiad competitions today!

STEM & STEAM - Chelmsford County High School for Girls



U15 MID-ESSEX CUP CRICKET

Posted: 9th June 2026

Wishing the CCHS team the best of luck as they compete in the Essex U15 Mid-Essex Cup cricket match today!

Sports - Chelmsford County High School for Girls



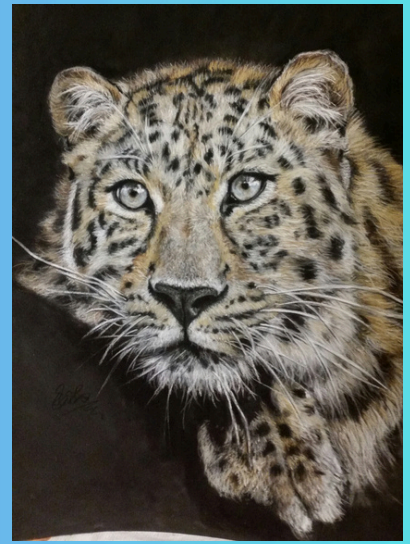
ARTS AWARD SUCCESS

Posted: 9th June 2026

Many congratulations to all Year 8 students who took part in the Arts Award Bronze project. We are delighted that every student achieved their Bronze award! The Arts Award scheme is a fantastic opportunity for students to explore the arts in all its forms: from creating and participating, to watching live performances, researching inspiring artists, and even sharing their skills with others. Thank you to Mr Harvey for his leading work on this important initiative.

The Arts - Chelmsford County High School for Girls





WIN A PASTEL PORTRAIT



OF YOUR FAVOURITE PET, PERSON OR WILD ANIMAL

(WORTH £200)

BY ELAINE READE



BUY YOUR

£1 RAFFLE TICKETS

BY 9TH JULY

VIA PARENTPAY



THE DRAW WILL TAKE PLACE ON 10TH JULY

ALL MONEY RAISED GOES TO THE PARENTS' ASSOCIATION





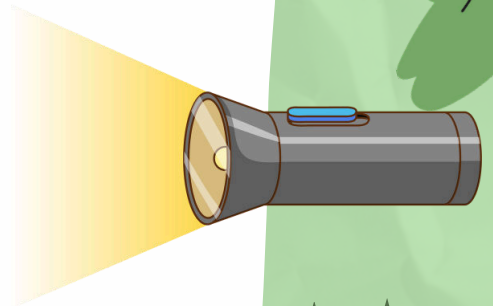
YEAR 13 STUDENTS - PASS IT ON & MAKE A DIFFERENCE!



The Parents' Association is collecting good-quality, pre-loved expedition and outdoor equipment to be resold to students preparing for their own DofE journeys.

WHAT WE'D LOVE:

- RUCKSACKS
- WALKING BOOTS
- HOODED JACKETS
- OVER TROUSERS
- SLEEPING MATS
- TORCHES
- COMPASSES
- WHISTLES
- CAMPING UTENSILS
- OTHER ESSENTIALS



Please bring your items into school reception ASAP so they can be prepared for resale at a future event. Your donation will help the PA raise funds to support enrichment activities, events and resources that benefit other CCHS students.

THANK YOU!





Instrumental and Vocal lessons 2026-27

Now is time to apply if you would like your daughter to have instrumental and/or vocal lessons for next academic year.

If they are already having lessons, you need to re-apply to continue having them next year

Everyone can apply, even if they have not had lessons before, and subject to space we will do our best to accommodate your request

Don't delay, apply today!

Please check the SchoolPost sent to all parents on **22nd May 2026**, which includes full details and the online application form

The deadline to apply is Monday 22nd June 2026

BARRACUDAS

ACTIVITY DAY CAMPS

AVAILABLE AT YOUR SCHOOL **2026!**
EXCLUSIVE PARENT DISCOUNT

GET AN EXTRA £25 OFF A WEEK/£5 OFF A DAY

USE CODE HSPC26

*Not to be used in conjunction with other codes.

- ⦿ 4 to 14 year olds!
- ⦿ 80+ Activities!
- ⦿ Choice each session!
- ⦿ Specialist Courses!
- ⦿ Flexible bookings!

HIGHLY RATED School Holiday Camps!!!



 barracudas.co.uk
 01480 467 567



Help us do more for your daughters – success through community



Success through Community

We are launching the CCHS Foundation¹ as a school community enterprise dedicated to raising funds, through voluntary contributions each year, to provide your daughters with more:

- more resources, including books, journals and websites
- more facilities, including
- ICT infrastructure and digital learning devices
- and more opportunities, including
- enrichment activities and educational visits

How to contribute financially towards the CCHS Foundation:

1. Set up a Regular payment by Standing Order with your Bank

This provides the Foundation with a regular income to allow us to plan ahead more effectively, and can be set to a payment amount, frequency and date to suit you. Please contact the school at finance@cchs.co.uk for our bank details.

2. Payment via ParentPay

You should find a payment item assigned to your daughter on ParentPay entitled 'Donate to CCHS Foundation'. Payment may be made via debit or credit card, and the amount can be edited to suit your wishes. Payments may be made as often as you like to suit your circumstances.

Additional payment items may be available at various times, 'giving days', for donating towards a specific fundraising goal.

3. Gift Aid

However you choose to contribute, if you are a UK tax payer, we can benefit further if you complete a Gift Aid Declaration form. This means that we can reclaim from HMRC any income tax you have paid on your donations to us, at a basic tax rate of 20%. The form can be accessed [here](#).

¹ The CCHS Foundation is not a distinct legal entity but a term we are using for this initiative under CCHS's exempt charitable status as an academy.

Ways to donate towards CCHS Capital projects:

1. TotalGiving

The School has set up an online fundraising page via [TotalGiving](#). This allows you to make regular or single contributions online using a credit or debit card. Gift Aid for eligible donations can also be processed through this route.

2. Giving through an employer scheme:

Payroll Giving

Payroll Giving (also known as ‘Give As You Earn’) is a valuable, long term source of revenue, providing regular income to help charities budget and plan more effectively. Your donation can often be made from your pre-tax income. Please ask your employer about this scheme.

As an academy, the School is considered to be an exempt charity and as such does not need to register with the Charity Commission. However, our charitable status is registered with HMRC. ‘Chelmsford County High School for Girls’ should be used as the reference on the payroll giving paperwork.

Company Gifts & Matched Funding

Some companies operate schemes allowing employees to nominate a charity for a company donation. This is often under a ‘matched funding’ programme whereby a company will match the donation made by the employee to their chosen charity. Please ask your employer about this scheme.

3. CAF Giving – more details

The Charities Aid Foundation (CAF) makes giving to charity easy. Through CAF, the value of your donation is increased via tax relief, and you have the option to donate anonymously.

4. Set up a regular payment by Standing Order with your Bank

This provides the School with a regular income to allow us to plan more effectively, and can be set to a payment amount, frequency and date to suit you. Please contact the school at finance@cchs.co.uk for our bank details.

5. Payment via ParentPay

You should find a payment item assigned to your daughter on [ParentPay](#) entitled ‘CCHS Buildings Appeal’. Payment may be made via debit or credit card, and the amount can be edited to suit your wishes. Payments may be made as often as you like to suit your circumstances.

Help us do more for your daughters – success through community

6. Gift Aid

Should you choose to contribute via bank standing order or ParentPay, if you are a UK tax payer we can benefit further if you complete a Gift Aid Declaration form. This means that we can reclaim from HMRC any income tax you have paid on your donations to us, at a basic tax rate of 20%. The form can be accessed [here](#).

Leaving a Legacy Please consider leaving the School a legacy in your will. If you leave a gift to a charity such as CCHS, its value will be deducted from your estate (your money, possessions and property) before Inheritance Tax is calculated.

Thank you, in advance, for any support you can provide to the students of CCHS

