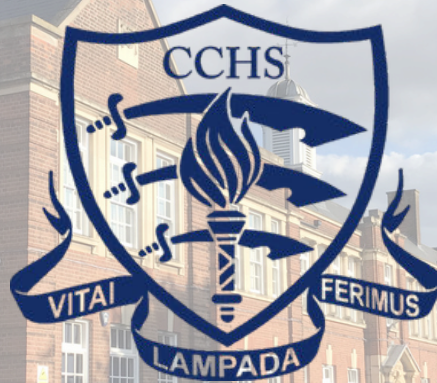


CCHS *Laudatio*

1st May 2026



Founded 1907

A leading academic school community,
inspired to excellence in education and opportunity for girls

MESSAGE FROM MR LAWLOR

We were delighted, as ever, to hold our Open Evening yesterday, for families who are considering CCHS for their daughters. It is always quite wonderful to meet pupils who may join us in Year 7 in the future.

Last night we saw hundreds of families who wish their daughters to start their secondary education with us here at CCHS. To witness this enthusiastic interest in girls' education and empowerment was superb. Indeed, this is mirrored in the hundreds of applications we receive each year from students in other schools who wish to join the CCHS Sixth Form.

The opportunity to tour the campus and see the range of buildings and facilities we have is important for families. More significant is the chance to meet and speak with staff and students; as always with schools, it is the people who make the place.

School staff were on hand across all subjects and areas to help families understand the incredible opportunities we have at CCHS for girls and young women. Our students supported families with tours and presentations, and they were magnificent. The feedback from families was so positive in relation to the work of staff and students.

A big thank you to all, including the fantastic Parents' Association, for the support with this notable school event, as we look to the future and the next cohort of girls who will join the CCHS community.



CCHS Values

CITIZENSHIP

Inspire future citizens to think for themselves and to act for others. (Amplification of School Vision: 'Developing the leaders of tomorrow')



DISTINCTION

Students will be provided with an outstanding education and we expect them to do their best in all endeavours. (Amplification of School Aim 1: 'The pursuit of excellence')



CHALLENGE

Students will be stimulated to acquire new knowledge & understanding and motivated to develop new skills & attributes. (Amplification of School Aim 2: 'Fulfilling individual potential')



DUTY

Students will conduct themselves with civility and compassion at all times, supporting each other and looking beyond themselves. (Amplification of School Aim 3: 'Contributing to the community')

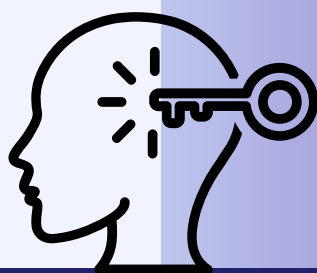
IMAGINATION

Enable students to explore new ideas and empathise with the thinking of others, without limitation or risk. (English, Sport and Arts subjects)



ENLIGHTENMENT

Equip students with the insight and determination to embrace new ideas, technology and innovation, enabling them to contribute to the ever-changing natural and physical world around them. (Mathematics, Computer Science and Natural Sciences subjects)



DIVERSITY

Provide students with the tools to respect and celebrate the great diversity of cultures, backgrounds and beliefs, within and beyond the School, whilst recognising that we have more in common than that which divides us. (Humanities, Languages and Social Sciences subjects)



D e s i d e r a t a

G O P L A C I D L Y amid the noise

and the haste, and remember what peace there may be in silence. As far as possible, without surrender, be on good terms with all persons. Speak your truth quietly and clearly; and listen to others, even to the dull and the ignorant; they too have their story.

Avoid loud and aggressive persons; they are vexatious to the spirit. If you compare yourself with others, you may become vain or bitter, for always there will be greater and lesser persons than yourself.

Enjoy your achievements as well as your plans. Keep interested in your own career, however humble; it is a real possession in the changing fortunes of time.

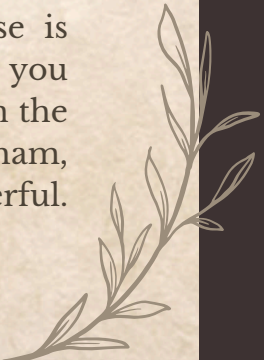
Exercise caution in your business affairs, for the world is full of trickery. But let this not blind you to what virtue there is; many persons strive for high ideals, and everywhere life is full of heroism. Be yourself. Especially do not feign affection. Neither be cynical about love; for in the face of all aridity and disenchantment, it is as perennial as the grass.

Take kindly the counsel of the years, gracefully surrendering the things of youth. Nurture strength of spirit to shield you in sudden misfortune. But do not distress yourself with dark imaginings. Many fears are born of fatigue and loneliness.

Beyond a wholesome discipline, be gentle with yourself. You are a child of the universe no less than the trees and the stars; you have a right to be here.

And whether or not it is clear to you, no doubt the universe is unfolding as it should. Therefore be at peace with God, whatever you conceive Him to be. And whatever your labors and aspirations, in the noisy confusion of life, keep peace in your soul. With all its sham, drudgery and broken dreams, it is still a beautiful world. Be cheerful. Strive to be happy.

by Max Ehrmann ©1927





Student Achievements

Have you got some news to share?
If so, please email Mrs Gross (jgross@cchs.co.uk) and attach a photo or logo, if applicable.

Congratulations to Sarah, (13PKU), who has successfully completed the STEM SMART Programme, delivered by the University of Cambridge in association with Isaac Science.

She was highly commended for the extraordinary tenacity and dedication she demonstrated throughout the programme, having completed the full 48 weeks of assignments and tutorials. This is a remarkable achievement and a clear reflection of her strong commitment to learning.

[STEM SMART | Undergraduate Study](#)



Ophelia, 11F, Eleanor, 11S, and Erin, 11S, have successfully passed the Arkwright Engineering Scholarship selection process and are now confirmed as Arkwright Scholars.

This year, these students were supported by our current Sixth Form Arkwright Scholars throughout the application process. They were also fortunate to benefit from a mock interview with Steve Miles and Adam Wood, which proved extremely valuable when preparing for the final round.

Congratulations, Ophelia, Eleanor and Erin!



Arkwright

Engineering Scholarships

Artist of the week



ARTIST OF THE WEEK- Sofia, in Year 9, for her Pop Art research.
Well done!!

CCHS RECOMMENDS

Today's recommendation comes from Dorothy Byrne who spoke so powerfully at the CCHS Senior Speech Day last week (for the website we can say 'in April 2025'). Dorothy recommends to us the work of Hiranya Paris, here featured on the BBC's The Life Scientific. Dr Hiranya Peiris is Professor of Astrophysics in the University of Cambridge and a fellow of Murray Edwards College. She is a pioneering researcher whose work brings together observational data and fundamental physics. She is also passionate about encouraging young women to study science and especially to study maths and physics and Dorothy Byrne recommends her to us as being 'utterly inspiring'.

[https://www.bbc.co.uk/sounds/play/moo2tpng?
partner=uk.co.bbc&origin=share-mobile](https://www.bbc.co.uk/sounds/play/moo2tpng?partner=uk.co.bbc&origin=share-mobile)



POLICY REMINDER

In line with the NHS guidance, it is mandatory that any student experiencing diarrhoea and/or vomiting symptoms remains away from the school setting until they have been symptom-free for 48 hours (the *48-hour rule*) and are feeling well.

This policy helps reduce the spread of contagious illnesses such as stomach bugs (norovirus or rotavirus), which can spread quickly in classrooms.



[Click here for NHS information on this topic](#)

Arrival at and departure from school

We continue to engage with local residents (First Avenue, Corporation Road, Swiss Avenue, Westfield Avenue and Elms Drive) concerning their experiences during student arrival and departure periods.

Further to my communications on this matter previously, I note below key points of information to support CCHS families:

- Chelmsford City Council provided the following about the use of Rectory Lane car park:

“Please be advised there is a standard five-minute grace period on all vehicles to allow the purchase of a pay and display ticket. Therefore, any vehicles that are in the car park for the purposes of dropping off and / or picking up should fall within that grace period.”

- As a result of the concerns raised by local residents regarding instances of inconsiderate and at times dangerous parking, South Essex Parking Partnership noted that their Parking Enforcement Team will be stepping up their patrols in the area.
- Our School Eco Committee is undertaking work, supported by the local authority, to explore how students travel to and from school, and how we could support both school families and the wider community with matters of travel, parking and congestion.
- Our Senior Leadership Team is working with local officials and local politicians on the matter of parking and congestion, and we have made suggestions to support this work, including the idea of creating a new entrance/exit point to the school site on the Chelmer Valley Road (east side of the campus).

Thank you, as ever, for your support in ensuring that we are mindful of local residents, as we work to keep people safe and relations cordial.

.....

Please be aware of your surroundings when dropping off and picking up students to and from school. The area directly outside our school, in Broomfield Road, is a very busy thoroughfare. A vehicle which is not parked safely can be dangerous for other vehicles, as can dropping off/picking up students in the buslane.



ROAD SAFETY

PRIMARY CREATIVE CONFERENCE

Theme: **NATURAL FORMS**

INSPIRE
EXPLORE
CREATE!

WORKSHOP LEADER:

JONATHAN HARVEY-THOMAS

Head of Art & practising artist
based in Chelmsford



MONDAY
29TH JUNE
2026
9.00 – 3.30

**CHELMSFORD
COUNTY HIGH SCHOOL**
Broomfield Road,
Chelmsford,
CM1 1RW

EXPLORE 4 EXCITING PRINTING TECHNIQUES:

**MONO
PRINTING**



**POLY
PRINTING**



**LINO
PRINTING**



**GELI
PRINTING**



DESIGNED FOR:

Primary school teachers
and TA's of all experiences
and levels – and anyone
who enjoys making things!
(Limited to two participants
per school)

COURSE OUTCOMES:

- ✓ Practical classroom strategies
- ✓ Take-away booklet, materials & resources to start your projects
- ✓ Discuss key issues in art teaching
- ✓ Help pupils learn more independently, confidently and securely



INCLUDES:

Morning coffee/tea,
delicious lunch
& refreshments



ALL MATERIALS PROVIDED

FREE to
all applicants!



LUNCH DONATION:

£5.00



PLACES LIMITED:

First come,
first served!

YOU WILL:

- ★ Gain confidence in delivering contemporary art projects
- ★ Learn new, accessible techniques for all key stages
- ★ Promote questioning, creativity and risk-taking
- ★ Get practical ideas for differentiation and progress
- ★ Take away a step-by-step booklet, materials & resources
- ★ Network with other passionate primary teachers

FREE

to all applicants
including materials



CLOSING DATE:

Friday 22nd May 2026



APPLY:

e-mail to: jharvey@cchs.co.uk

FREE WEBINAR

FOR PARENTS/ CARERS

of secondary aged children to support
with mental health and wellbeing.

Provided by your Mental Health Support Team

@EssexMHST_and_SETcamhs

bit.ly/4ozRciL



Coming up in May...

Understanding and
Supporting Anxiety
5th May 10 am

Understanding Autism
20th May 6:30 pm



Summer Term Parent Support Series

Free Parent Webinars

*Join us and Elevate Education for FREE
60- minute webinars designed to help you
support your child's studies at home.*

[Click here to Register](#)

In the Summer Term, we'll cover:

**How You Can Help Improve Your
Child's Memory**

- 12th May @6:00pm (BST)

**How to Help Your Child Alleviate
Stress -9th June @6:00pm
(BST)**

**How to Get (And Keep!) Your
Child Motivated -23rd June
@6:00pm (BST)**

**How You Can Set Your Child
Up for Success
-7th July @6:00pm (BST)**



CCHS News this week...

JUNIOR MATHS CHALLENGE

Posted: 29th April 2026

Good luck to all our students who are participating in the Junior Maths Challenge competition today.

STEM & STEAM - Chelmsford County High School for Girls



COMMEMORATION - 119TH ANNIVERSARY OF THE FOUNDATION OF CCHS

Posted: 30th April 2026

We mark the 119th anniversary of the foundation of CCHS with our Commemoration Assemblies today.

2026 also marks the 110th anniversary of the first CCHS alumna to complete her university studies - Winifred Picking, Girton College, University of Cambridge, in 1916. Indeed, colleagues at Girton College are also marking this anniversary with us today, through their social media channels.

PRESS RELEASE - CCHS Commemorates the 119th anniversary of the foundation of the school, April 2026

Please follow the link below to view a short film about the school produced with Chelmsford Civic Society as part of their Heritage Open Days project.

History of CCHS - Chelmsford County High School for Girls

OPEN EVENING (YEAR 7)

Posted: 30th April 2026

We look forward to welcoming families to our Year 7 Open Evening taking place later today.

[Admissions - Chelmsford County High School for Girls \(cchs.co.uk\)](https://www.cchs.co.uk)



Initial teacher training with Essex Schools ITT



ESSEX SCHOOLS ITT



School-based teacher training with a flexible, online learning programme through Tes Institute. Obtain QTS with optional PGCE.

95%

Completion rate*

(2024-25 cohort)

(far higher than most providers or institutions)
100% pass rate for PGCE

TRAIN AT THIS SCHOOL OR ANOTHER ONE LOCAL TO YOU

40+

Secondary & primary schools in our partnership... and growing!



Employment rate in the last 10 years

Every year, at least **65%** of trainees secure posts at their main placement school, or nearby partnership school. Many of these before the end of the course

BURSARIES UP TO **£29K*** PLUS FULLY-FUNDED SUBJECT KNOWLEDGE ENHANCEMENT COURSES FOR MANY SUBJECTS (PAYING £175 PW)

(FOUNDED PREVIOUS YEAR. NEW FIGURES FOR SEPT 2024 AWAITED)

PART TIME OPTION AVAILABLE FOR STRONG APPLICANTS - WE WELCOME CAREER CHANGES AND THOSE RETURNING TO WORK AFTER LEAVING FAMILIES



TEACHING OFFERS GENEROUS STARTING PAY AND EXCELLENT PROSPECTS FOR PROMOTION



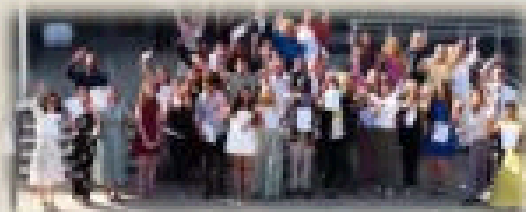
PGCE WITH QTS



IS AN INTERNATIONALLY RECOGNIZED QUALIFICATION

"YOU HAVE PROVIDED ME WITH THE TOOLS I NEED TO BE A GREAT TEACHER!"
OYETOLA, PE TRAINEE

"I FEEL SO COMFORTABLE IN THE CLASSROOM NOW AND COMPLETELY PREPARED TO START MY TEACHING CAREER. THE SUPPORT I'VE RECEIVED HAS BEEN SECOND TO NONE."
LOTTIE - GEOGRAPHY TRAINEE



teach@essexschoolsitt.com

020 8498 6718

www.essexschoolsitt.com



ESSEX SCHOOLS ITT



Got a **degree** you're not really using? Looking for a challenging **new career**? Time to think about becoming a **teacher....?**



Graduates 2024-25

Train to teach at our school, or another one local to you! Gain qualified teacher status (QTS), and an optional post-graduate certificate in education (PGCE) through the **Essex Schools ITT** initial teacher-training programme.

Join our next **online information event**:

Tuesday 5th May, from 7.30pm

Scan the QR code to view our events page and register via Eventbrite:



<https://www.essexschoolsitt.com/events/>

Our school is part of the **Essex Schools ITT** programme, which allows you to **train with us or in a nearby partnership school**. You'll work as a member of the school team and learn your skills from **experienced professionals**, supplemented by high quality, **online learning sessions** through **Tes Institute**.

Get tailored, one-to-one advice today:

Essex Schools ITT in partnership with

Call: 020 8498 6718

Email: teach@essexschoolsitt.com

Visit: <https://www.essexschoolsitt.com>



Our Commitment to Girls' Education

We are proud to be a **founding member of the UK division of the International Coalition of Girls' Schools (ICGS)** – a global organisation dedicated to empowering girls through education and sharing research-based best practices.

The ICGS conducts extensive research into the benefits of an all-girls education, including improved academic outcomes, confidence, and leadership opportunities. These insights help us shape the very best learning environment for your daughter.

Why should parents engage with this research?

By exploring these studies, you can:

- ✓ Understand the proven advantages of an all-girls education.
- ✓ Gain practical strategies to support your daughter's learning journey.
- ✓ Stay informed about global trends and innovations in girls' education.

We regularly update our website with the latest research findings and will continue to share details when new studies are released.

👉 **Discover more here:** <https://www.cchs.co.uk/about-us/girls-education-research/>

Together, we can ensure every student thrives and becomes a leader of tomorrow.

This week in PSHE

YEAR GROUP	TUESDAY 5 th MAY				PERIOD	5
	A	C	F	G	H	S
7	Personal hygiene					
8	Understanding mental health issues			Fire officer	Coping strategies	
9	Family roles and parenting					
10	Consent & healthy experiences.	Samaritans visit	Staying safe from harmful content			
12	Wize Up Financial Education – Student finances & Apprenticeships.					
13	Private revision with form tutors					

Help us do more for your daughters – success through community



Success through Community

We are launching the CCHS Foundation¹ as a school community enterprise dedicated to raising funds, through voluntary contributions each year, to provide your daughters with more:

- more resources, including books, journals and websites
- more facilities, including
- ICT infrastructure and digital learning devices
- and more opportunities, including
- enrichment activities and educational visits

How to contribute financially towards the CCHS Foundation:

1. Set up a Regular payment by Standing Order with your Bank

This provides the Foundation with a regular income to allow us to plan ahead more effectively, and can be set to a payment amount, frequency and date to suit you. Please contact the school at finance@cchs.co.uk for our bank details.

2. Payment via ParentPay

You should find a payment item assigned to your daughter on ParentPay entitled 'Donate to CCHS Foundation'. Payment may be made via debit or credit card, and the amount can be edited to suit your wishes. Payments may be made as often as you like to suit your circumstances.

Additional payment items may be available at various times, 'giving days', for donating towards a specific fundraising goal.

3. Gift Aid

However you choose to contribute, if you are a UK tax payer, we can benefit further if you complete a Gift Aid Declaration form. This means that we can reclaim from HMRC any income tax you have paid on your donations to us, at a basic tax rate of 20%. The form can be accessed [here](#).

¹ The CCHS Foundation is not a distinct legal entity but a term we are using for this initiative under CCHS's exempt charitable status as an academy.

Ways to donate towards CCHS Capital projects:

1. TotalGiving

The School has set up an online fundraising page via [TotalGiving](#). This allows you to make regular or single contributions online using a credit or debit card. Gift Aid for eligible donations can also be processed through this route.

2. Giving through an employer scheme:

Payroll Giving

Payroll Giving (also known as ‘Give As You Earn’) is a valuable, long term source of revenue, providing regular income to help charities budget and plan more effectively. Your donation can often be made from your pre-tax income. Please ask your employer about this scheme.

As an academy, the School is considered to be an exempt charity and as such does not need to register with the Charity Commission. However, our charitable status is registered with HMRC. ‘Chelmsford County High School for Girls’ should be used as the reference on the payroll giving paperwork.

Company Gifts & Matched Funding

Some companies operate schemes allowing employees to nominate a charity for a company donation. This is often under a ‘matched funding’ programme whereby a company will match the donation made by the employee to their chosen charity. Please ask your employer about this scheme.

3. CAF Giving – more details

The Charities Aid Foundation (CAF) makes giving to charity easy. Through CAF, the value of your donation is increased via tax relief, and you have the option to donate anonymously.

4. Set up a regular payment by Standing Order with your Bank

This provides the School with a regular income to allow us to plan more effectively, and can be set to a payment amount, frequency and date to suit you. Please contact the school at finance@cchs.co.uk for our bank details.

5. Payment via ParentPay

You should find a payment item assigned to your daughter on [ParentPay](#) entitled ‘CCHS Buildings Appeal’. Payment may be made via debit or credit card, and the amount can be edited to suit your wishes. Payments may be made as often as you like to suit your circumstances.

Help us do more for your daughters – success through community

6. Gift Aid

Should you choose to contribute via bank standing order or ParentPay, if you are a UK tax payer we can benefit further if you complete a Gift Aid Declaration form. This means that we can reclaim from HMRC any income tax you have paid on your donations to us, at a basic tax rate of 20%. The form can be accessed [here](#).

Leaving a Legacy Please consider leaving the School a legacy in your will. If you leave a gift to a charity such as CCHS, its value will be deducted from your estate (your money, possessions and property) before Inheritance Tax is calculated.

Thank you, in advance, for any support you can provide to the students of CCHS

