

CCHS Laudatio

15th May 2026



Founded 1907

A leading academic school community,
inspired to excellence in education and opportunity for girls

MESSAGE FROM MR LAWLOR

On Wednesday morning, a group of ten Year 9 students, accompanied by Mrs Lewis, Miss Burnham and Mr Lamberti, visited the Admirals Reach Care Home in Chelmsford to perform a programme of music, ranging from Billy Joel to Beethoven, for the residents. This wonderful community outreach project was started last year by Mrs Chumbley. Please see below an insight into this superb event from Imogen and Tamsin:

Earlier this week, on Wednesday 13th May, we were part of a group of 10 Year 9 students who visited Admirals Reach Care Home to perform a selection of musical pieces for the residents. For over an hour we played 16 pieces, including Howl's Moving Castle, Pink Panther, and Moon River. Since many of the residents were older, we chose some familiar songs and well-known melodies that we thought they would enjoy and recognise. It was really nice to see people smiling, clapping along, and even mouthing the words of the songs while we performed.

To mention just one, we did a group piece as our finale – Piano Man by Billy Joel with 2 on the keyboard, 2 cellists, 6 singers and Pearle on harmonica, our rendition was truly the highlight of our morning. We were proud to represent the school and would like to thank Miss Burnham and Mrs Lewis for helping support us, as well as everyone at Admirals Reach for making us feel so welcome. In particular, a special thank you to Mr Lamberti who organised this whole thing; we couldn't have done it without him! Overall, it was a really enjoyable and memorable experience, and we hope next year's Year 9s will enjoy it just as much as we did! – Imogen and Tamsin, 9H.



CCHS Values

CITIZENSHIP

Inspire future citizens to think for themselves and to act for others. (Amplification of School Vision: 'Developing the leaders of tomorrow')



DISTINCTION

Students will be provided with an outstanding education and we expect them to do their best in all endeavours. (Amplification of School Aim 1: 'The pursuit of excellence')



CHALLENGE

Students will be stimulated to acquire new knowledge & understanding and motivated to develop new skills & attributes. (Amplification of School Aim 2: 'Fulfilling individual potential')



DUTY

Students will conduct themselves with civility and compassion at all times, supporting each other and looking beyond themselves. (Amplification of School Aim 3: 'Contributing to the community')

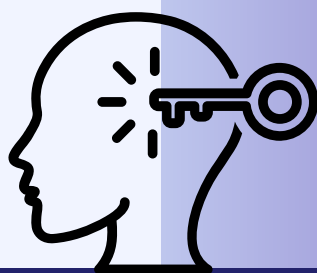
IMAGINATION

Enable students to explore new ideas and empathise with the thinking of others, without limitation or risk. (English, Sport and Arts subjects)



ENLIGHTENMENT

Equip students with the insight and determination to embrace new ideas, technology and innovation, enabling them to contribute to the ever-changing natural and physical world around them. (Mathematics, Computer Science and Natural Sciences subjects)



DIVERSITY

Provide students with the tools to respect and celebrate the great diversity of cultures, backgrounds and beliefs, within and beyond the School, whilst recognising that we have more in common than that which divides us. (Humanities, Languages and Social Sciences subjects)



D e s i d e r a t a

G O P L A C I D L Y amid the noise

and the haste, and remember what peace there may be in silence. As far as possible, without surrender, be on good terms with all persons. Speak your truth quietly and clearly; and listen to others, even to the dull and the ignorant; they too have their story.

Avoid loud and aggressive persons; they are vexatious to the spirit. If you compare yourself with others, you may become vain or bitter, for always there will be greater and lesser persons than yourself.

Enjoy your achievements as well as your plans. Keep interested in your own career, however humble; it is a real possession in the changing fortunes of time.

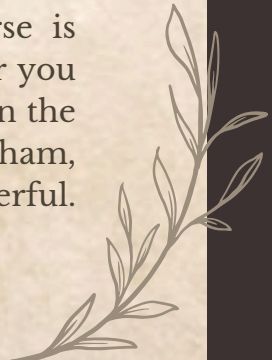
Exercise caution in your business affairs, for the world is full of trickery. But let this not blind you to what virtue there is; many persons strive for high ideals, and everywhere life is full of heroism. Be yourself. Especially do not feign affection. Neither be cynical about love; for in the face of all aridity and disenchantment, it is as perennial as the grass.

Take kindly the counsel of the years, gracefully surrendering the things of youth. Nurture strength of spirit to shield you in sudden misfortune. But do not distress yourself with dark imaginings. Many fears are born of fatigue and loneliness.

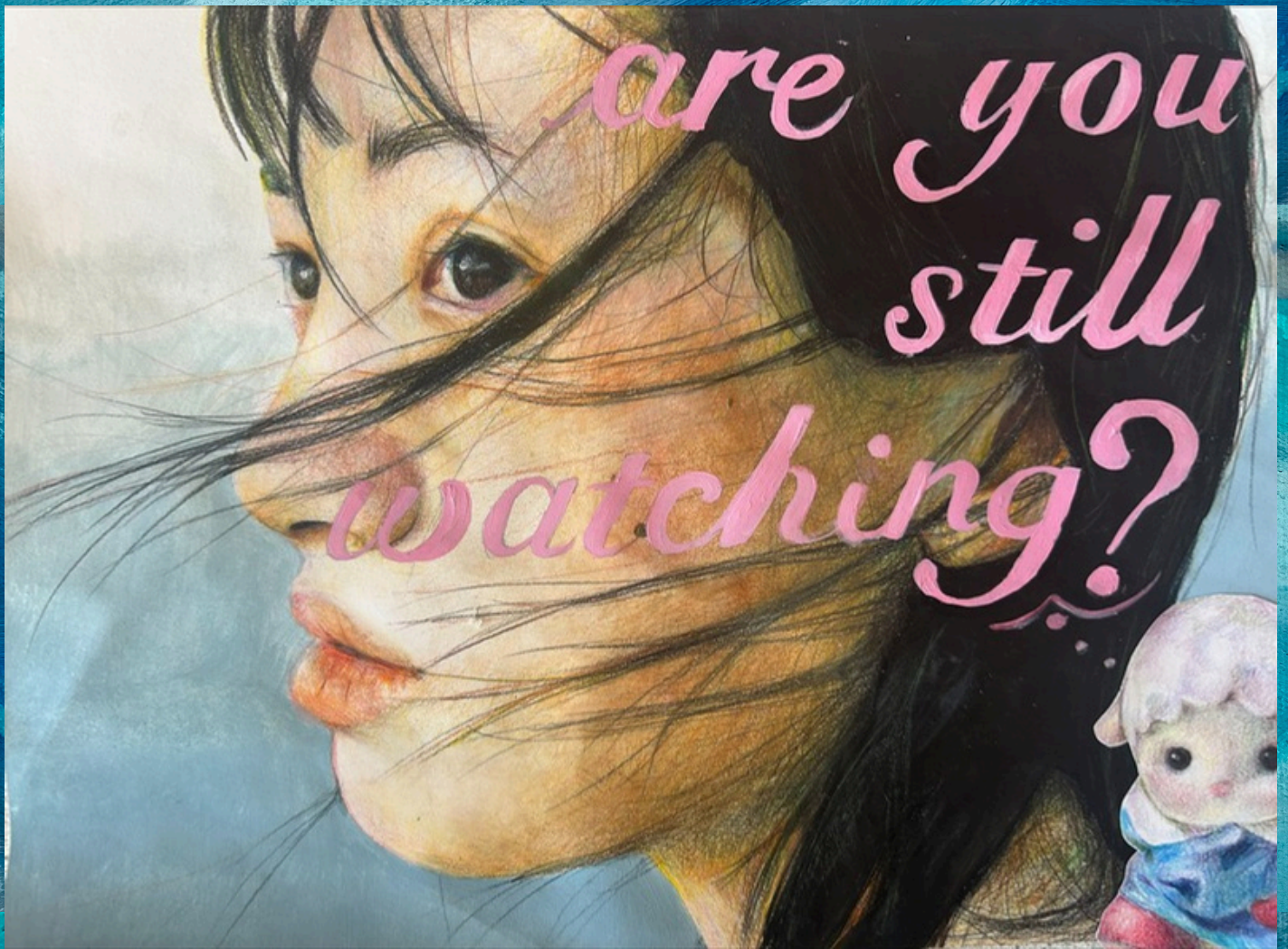
Beyond a wholesome discipline, be gentle with yourself. You are a child of the universe no less than the trees and the stars; you have a right to be here.

And whether or not it is clear to you, no doubt the universe is unfolding as it should. Therefore be at peace with God, whatever you conceive Him to be. And whatever your labors and aspirations, in the noisy confusion of life, keep peace in your soul. With all its sham, drudgery and broken dreams, it is still a beautiful world. Be cheerful. Strive to be happy.

by Max Ehrmann ©1927



Artist
of the week



ARTIST OF THE WEEK- Ziyun, Year 11, for her stunning colour pencil drawing.

ART

We would like to invite you to a Private View of art by Chelmsford County High School for Girls A level students.

EXHIBITION

2026

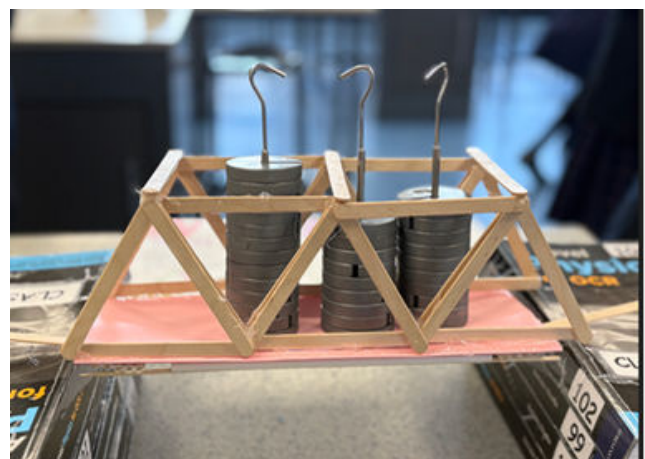
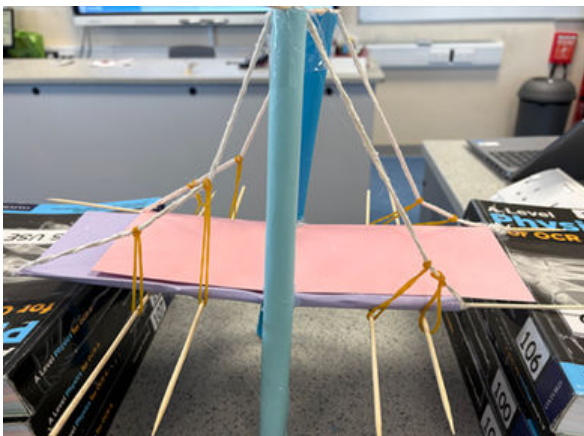
Friday 6th June
5pm - 7pm

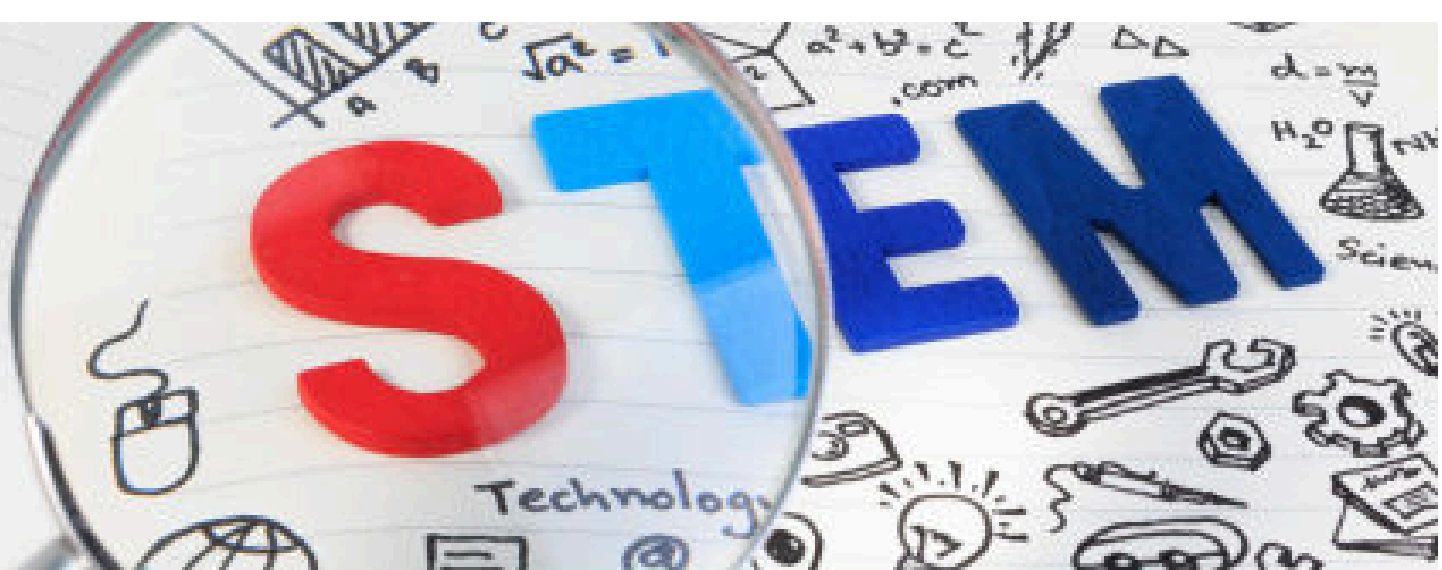


The exhibition will take place in the Anstee foyer
Light refreshments will be served.

YEAR 10 STEM ENRICHMENT: BRIDGE BUILDING CHALLENGE

While Year 10 geographers were in Eryri, students in school took on an exciting engineering challenge in their Physics lessons. Working in teams, they researched, designed, and built their own bridges, carefully considering cost as well as strength and stability, before putting them to the test. It was fantastic to see their creativity, teamwork, and problem-solving skills in action. Thank you to Dr Cannon and Mrs Hurley for organising this fantastic opportunity for the students.





THE FUTURE SKILLS PROGRAMME: CAREERS IN STEM

For Yr 9 &
Yr 10/S3
and S4



Explore STEM careers in four key pathways during May half term!



What is involved?

- A comprehensive experience delivered virtually in May.
- Live Q&A sessions with STEM professionals in Net Zero futures, Digital AI futures, Health and Life Sciences, Engineering & Infrastructure and Manufacturing futures.
- CV, applications and interview support.
- Interactive panel Q&A sessions with universities & apprentices.
- Learn how to succeed in the workplace, including how to ask questions, network and write professional emails.
- Achieve the Bronze Industrial Cadet Award.

Dates

- 20 hours of study to complete flexibly over 4 days in May.
- Tuesday 26th - Friday 29th May.

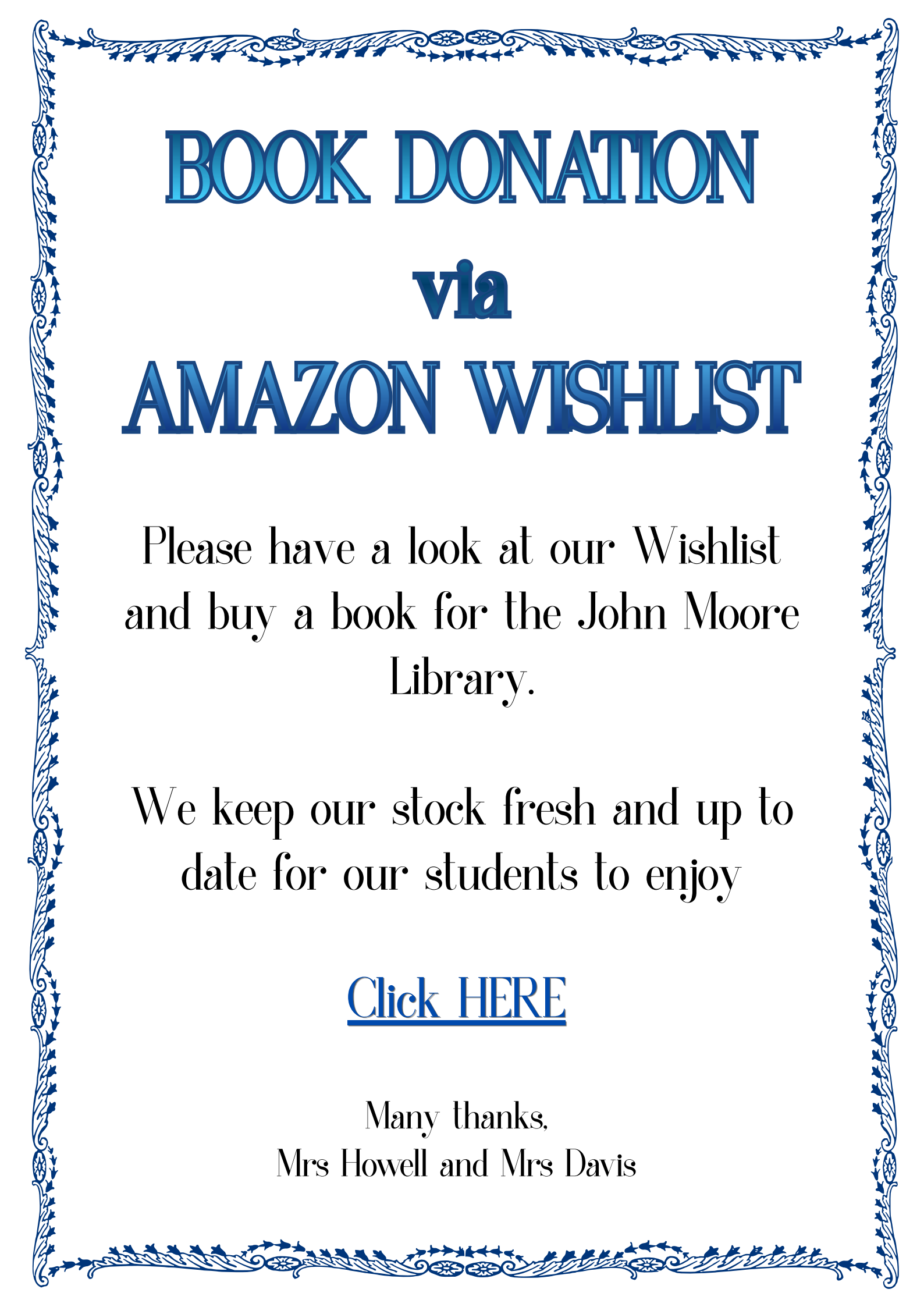
Cost/Funding

- £50 (bursaries available, click [here](#) for bursary criteria and availability).

How to register or find out more

To register, please visit our website [here](#) or scan the QR code!





BOOK DONATION

via

AMAZON WISHLIST

Please have a look at our Wishlist
and buy a book for the John Moore
Library.

We keep our stock fresh and up to
date for our students to enjoy

[Click HERE](#)

Many thanks,
Mrs Howell and Mrs Davis

POLICY REMINDER

In line with the NHS guidance, it is mandatory that any student experiencing diarrhoea and/or vomiting symptoms remains away from the school setting until they have been symptom-free for 48 hours (the *48-hour rule*) and are feeling well.

This policy helps reduce the spread of contagious illnesses such as stomach bugs (norovirus or rotavirus), which can spread quickly in classrooms.



[Click here for NHS information on this topic](#)

Arrival at and departure from school

We continue to engage with local residents (First Avenue, Corporation Road, Swiss Avenue, Westfield Avenue and Elms Drive) concerning their experiences during student arrival and departure periods.

Further to my communications on this matter previously, I note below key points of information to support CCHS families:

- Chelmsford City Council provided the following about the use of Rectory Lane car park:

“Please be advised there is a standard five-minute grace period on all vehicles to allow the purchase of a pay and display ticket. Therefore, any vehicles that are in the car park for the purposes of dropping off and / or picking up should fall within that grace period.”

- As a result of the concerns raised by local residents regarding instances of inconsiderate and at times dangerous parking, South Essex Parking Partnership noted that their Parking Enforcement Team will be stepping up their patrols in the area.
- Our School Eco Committee is undertaking work, supported by the local authority, to explore how students travel to and from school, and how we could support both school families and the wider community with matters of travel, parking and congestion.
- Our Senior Leadership Team is working with local officials and local politicians on the matter of parking and congestion, and we have made suggestions to support this work, including the idea of creating a new entrance/exit point to the school site on the Chelmer Valley Road (east side of the campus).

Thank you, as ever, for your support in ensuring that we are mindful of local residents, as we work to keep people safe and relations cordial.

Please be aware of your surroundings when dropping off and picking up students to and from school. The area directly outside our school, in Broomfield Road, is a very busy thoroughfare. A vehicle which is not parked safely can be dangerous for other vehicles, as can dropping off/picking up students in the buslane.



ROAD SAFETY

PRIMARY CREATIVE CONFERENCE

Theme: **NATURAL FORMS**

INSPIRE
EXPLORE
CREATE!

WORKSHOP LEADER:

JONATHAN HARVEY-THOMAS

Head of Art & practising artist
based in Chelmsford



MONDAY
29TH JUNE
2026
9.00 – 3.30

**CHELMSFORD
COUNTY HIGH SCHOOL**
Broomfield Road,
Chelmsford,
CM1 1RW

EXPLORE 4 EXCITING PRINTING TECHNIQUES:

MONO
PRINTING



POLY
PRINTING



LINO
PRINTING



GELI
PRINTING



DESIGNED FOR:

Primary school teachers
and TA's of all experiences
and levels – and anyone
who enjoys making things!
(Limited to two participants
per school)

COURSE OUTCOMES:

- ✓ Practical classroom strategies
- ✓ Take-away booklet, materials & resources to start your projects
- ✓ Discuss key issues in art teaching
- ✓ Help pupils learn more independently, confidently and securely

YOU WILL:

- ★ Gain confidence in delivering contemporary art projects
- ★ Learn new, accessible techniques for all key stages
- ★ Promote questioning, creativity and risk-taking
- ★ Get practical ideas for differentiation and progress
- ★ Take away a step-by-step booklet, materials & resources
- ★ Network with other passionate primary teachers

FREE

to all applicants
including materials



INCLUDES:

Morning coffee/tea,
delicious lunch
& refreshments



ALL MATERIALS PROVIDED

FREE to
all applicants!



LUNCH DONATION:

£5.00



PLACES LIMITED:

First come,
first served!



CLOSING DATE:

Friday 22nd May 2026



APPLY:

e-mail to: jharvey@cchs.co.uk

Our Commitment to Girls' Education

We are proud to be a **founding member of the UK division of the International Coalition of Girls' Schools (ICGS)** – a global organisation dedicated to empowering girls through education and sharing research-based best practices.

The ICGS conducts extensive research into the benefits of an all-girls education, including improved academic outcomes, confidence, and leadership opportunities. These insights help us shape the very best learning environment for your daughter.

Why should parents engage with this research?

By exploring these studies, you can:

- ✓ Understand the proven advantages of an all-girls education.
- ✓ Gain practical strategies to support your daughter's learning journey.
- ✓ Stay informed about global trends and innovations in girls' education.

We regularly update our website with the latest research findings and will continue to share details when new studies are released.

👉 **Discover more here:** <https://www.cchs.co.uk/about-us/girls-education-research/>

Together, we can ensure every student thrives and becomes a leader of tomorrow.

This week in PSHE

YEAR GROUP	FRIDAY 22 nd MAY				PERIOD	5
	A	C	F	G	H	S
7	Non-Verbal communication					
8	Careers lesson pt2 with Dr Hiner					
9	Careers lesson.					
10	Blood and Stem Cell donation	First Aid	Geographers in 10G and 10H- Samaritans Visitor		First Aid	
			Non-geographers in 10G & 10H- Blood and Stem Cells donation			
12	UCAS with Form tutors					

As several students in 10G and 10H missed the Samaritans visitor last week due to the GCSE Geography field trip to Snowdonia (Eryri National Park), these forms will be split into two so that all students have the opportunity to hear the guest speaker.

*Please note that Year 9 will be learning about grief and bereavement straight after the half term holidays for 2 lessons. Obviously as a school, we understand that this is a sensitive issue, although we do believe that this is an important issue to discuss with the students. The lessons are written by the UK bereavement charity – Winston's wish <https://www.winstonswish.org/> and are age-appropriate and deal with this sensitive issue with care and consideration.

If you would like any more information, please contact the PSHE coordinator – sbuckley@cchs.co.uk or Head of Year 9 – cburnham@cchs.co.uk

FREE WEBINAR

FOR PARENTS/ CARERS

of secondary aged children to support
with mental health and wellbeing.

Provided by your Mental Health Support Team

@EssexMHST_and_SETcamhs

bit.ly/4ozRciL



**Coming up
in May...**

Understanding Autism
20th May 6:30 pm



Summer Term Parent Support Series

Free Parent Webinars

*Join us and Elevate Education for FREE
60- minute webinars designed to help you
support your child's studies at home.*

[Click here to Register](#)

In the Summer Term, we'll cover:

**How to Help Your Child Alleviate
Stress** -9th June @6:00pm
(BST)

**How to Get (And Keep!) Your
Child Motivated** -23rd June
@6:00pm (BST)

**How You Can Set Your Child
Up for Success**
-7th July @6:00pm (BST)



CCHS News this week...

HOUSE TENNIS

Posted: 11th May 2026

Good luck to all the students taking part in the first rounds of our House Tennis competitions this week. Students in Years 7 and 8 will be competing today and tomorrow, followed by students in Years 9 and 10 on Friday.

House System - Chelmsford County High School for Girls



HOUSE CRICKET

Posted: 12th May 2026

Good luck to all the students taking part in the House Cricket competitions taking place this week. Our Year 8 competition takes place today, followed by Year 10 tomorrow, and Year 9 on Thursday.

House System - Chelmsford County High School for Girls



ADMIRALS REACH CARE HOME VISIT

Posted: 13th May 2026

A group of Year 9 students will be visiting the Admirals Reach Care Home today, where they will be spending valuable time engaging with residents, building meaningful connections across generations, and performing a mini concert. Their performance will include a range of well-known pieces, from *Pink Panther* to *Piano Man* by Billy Joel.

Categories: Uncategorized

ESAA FIELD & TRACK CUP

Posted: 14th May 2026

All the best to the CCHS Team, who are competing in the English Schools' Athletic Association Track & Field Cup competition today.

Sports - Chelmsford County High School for Girls





Ready, Set, Save!

**15%
off**

Everything!

In-store & Online

Use Code: **SAVE15 at checkout.**

Shop online today and start saving!

monkhouse.com

From 18th May - 26th May



The full experience of **Adventure Island** ... at a lower price

Exclusive CCHS PA price



Why you'll love it:

- Enjoy £8 off the usual £28 gate price
- Valid throughout the 2026 season
- Each voucher = a wristband for a full day of fun!

ORDER NOW ON PARENTPAY

How to get your reduced price wristbands:

Order via ParentPay. Vouchers will be available for collection from the Finance Office the week following purchase.

We have limited availability, so once they're gone, they're gone. 😊 Vouchers are non-refundable.



Help us do more for your daughters – success through community



Success through Community

We are launching the CCHS Foundation¹ as a school community enterprise dedicated to raising funds, through voluntary contributions each year, to provide your daughters with more:

- more resources, including books, journals and websites
- more facilities, including
- ICT infrastructure and digital learning devices
- and more opportunities, including
- enrichment activities and educational visits

How to contribute financially towards the CCHS Foundation:

1. Set up a Regular payment by Standing Order with your Bank

This provides the Foundation with a regular income to allow us to plan ahead more effectively, and can be set to a payment amount, frequency and date to suit you. Please contact the school at finance@cchs.co.uk for our bank details.

2. Payment via ParentPay

You should find a payment item assigned to your daughter on ParentPay entitled 'Donate to CCHS Foundation'. Payment may be made via debit or credit card, and the amount can be edited to suit your wishes. Payments may be made as often as you like to suit your circumstances.

Additional payment items may be available at various times, 'giving days', for donating towards a specific fundraising goal.

3. Gift Aid

However you choose to contribute, if you are a UK tax payer, we can benefit further if you complete a Gift Aid Declaration form. This means that we can reclaim from HMRC any income tax you have paid on your donations to us, at a basic tax rate of 20%. The form can be accessed [here](#).

¹ The CCHS Foundation is not a distinct legal entity but a term we are using for this initiative under CCHS's exempt charitable status as an academy.

Ways to donate towards CCHS Capital projects:

1. TotalGiving

The School has set up an online fundraising page via [TotalGiving](#). This allows you to make regular or single contributions online using a credit or debit card. Gift Aid for eligible donations can also be processed through this route.

2. Giving through an employer scheme:

Payroll Giving

Payroll Giving (also known as ‘Give As You Earn’) is a valuable, long term source of revenue, providing regular income to help charities budget and plan more effectively. Your donation can often be made from your pre-tax income. Please ask your employer about this scheme.

As an academy, the School is considered to be an exempt charity and as such does not need to register with the Charity Commission. However, our charitable status is registered with HMRC. ‘Chelmsford County High School for Girls’ should be used as the reference on the payroll giving paperwork.

Company Gifts & Matched Funding

Some companies operate schemes allowing employees to nominate a charity for a company donation. This is often under a ‘matched funding’ programme whereby a company will match the donation made by the employee to their chosen charity. Please ask your employer about this scheme.

3. CAF Giving – more details

The Charities Aid Foundation (CAF) makes giving to charity easy. Through CAF, the value of your donation is increased via tax relief, and you have the option to donate anonymously.

4. Set up a regular payment by Standing Order with your Bank

This provides the School with a regular income to allow us to plan more effectively, and can be set to a payment amount, frequency and date to suit you. Please contact the school at finance@cchs.co.uk for our bank details.

5. Payment via ParentPay

You should find a payment item assigned to your daughter on [ParentPay](#) entitled ‘CCHS Buildings Appeal’. Payment may be made via debit or credit card, and the amount can be edited to suit your wishes. Payments may be made as often as you like to suit your circumstances.

Help us do more for your daughters – success through community

6. Gift Aid

Should you choose to contribute via bank standing order or ParentPay, if you are a UK tax payer we can benefit further if you complete a Gift Aid Declaration form. This means that we can reclaim from HMRC any income tax you have paid on your donations to us, at a basic tax rate of 20%. The form can be accessed [here](#).

Leaving a Legacy Please consider leaving the School a legacy in your will. If you leave a gift to a charity such as CCHS, its value will be deducted from your estate (your money, possessions and property) before Inheritance Tax is calculated.

Thank you, in advance, for any support you can provide to the students of CCHS

