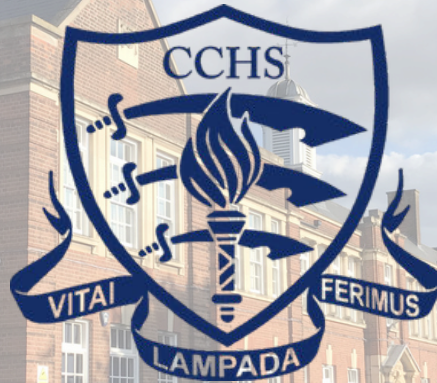


CCHS Laudatio

17th April 2026



Founded 1907

A leading academic school community,
inspired to excellence in education and opportunity for girls

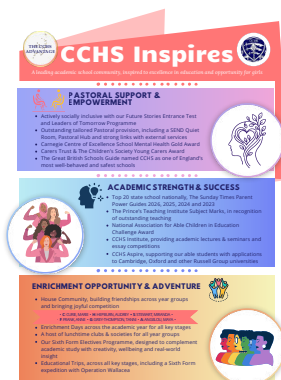
MESSAGE FROM MR LAWLOR

We were delighted to celebrate the successes and achievements of last year's Year 13 students at our Senior Speech Day ceremony at Chelmsford Cathedral on Wednesday evening. It was wonderful for staff, trustees, dignitaries and guests to congratulate these remarkable young women, with their families and friends present.

A warm thanks to the inspirational Dorothy Byrne, who was our guest speaker. Dorothy also spoke at the International Coalition of Girls' Schools Student Leadership Symposium in October 2025, which was held at CCHS and expertly organised by our own Miss Harrison and Miss Burnham. Dorothy was Head of News and Current Affairs at Channel 4 Television for 15 years, with her programmes winning numerous Royal Television Society, BAFTA and Emmy awards. Dorothy was elected a Fellow of the Royal Television Society for her outstanding contribution to television and has won several major television awards including the RTS Journalism Award. Dorothy also served as President of Murray Edwards College, Cambridge, between 2021 and 2025.

We look forward to hearing from this cohort, as members of the CCHS Alumnae now, as they progress through their degree studies and on into the next stage of their lives – many congratulations, again, to them all!

Alumnae - Chelmsford County High School for Girls



CCHS Values

CITIZENSHIP

Inspire future citizens to think for themselves and to act for others. (Amplification of School Vision: 'Developing the leaders of tomorrow')



DISTINCTION

Students will be provided with an outstanding education and we expect them to do their best in all endeavours. (Amplification of School Aim 1: 'The pursuit of excellence')



CHALLENGE

Students will be stimulated to acquire new knowledge & understanding and motivated to develop new skills & attributes. (Amplification of School Aim 2: 'Fulfilling individual potential')



DUTY

Students will conduct themselves with civility and compassion at all times, supporting each other and looking beyond themselves. (Amplification of School Aim 3: 'Contributing to the community')

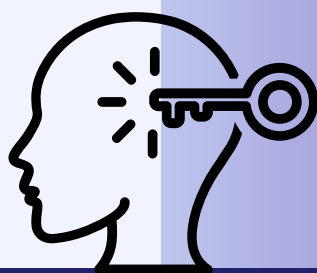
IMAGINATION

Enable students to explore new ideas and empathise with the thinking of others, without limitation or risk. (English, Sport and Arts subjects)



ENLIGHTENMENT

Equip students with the insight and determination to embrace new ideas, technology and innovation, enabling them to contribute to the ever-changing natural and physical world around them. (Mathematics, Computer Science and Natural Sciences subjects)



DIVERSITY

Provide students with the tools to respect and celebrate the great diversity of cultures, backgrounds and beliefs, within and beyond the School, whilst recognising that we have more in common than that which divides us. (Humanities, Languages and Social Sciences subjects)



D e s i d e r a t a

G O P L A C I D L Y amid the noise

and the haste, and remember what peace there may be in silence. As far as possible, without surrender, be on good terms with all persons. Speak your truth quietly and clearly; and listen to others, even to the dull and the ignorant; they too have their story.

Avoid loud and aggressive persons; they are vexatious to the spirit. If you compare yourself with others, you may become vain or bitter, for always there will be greater and lesser persons than yourself.

Enjoy your achievements as well as your plans. Keep interested in your own career, however humble; it is a real possession in the changing fortunes of time.

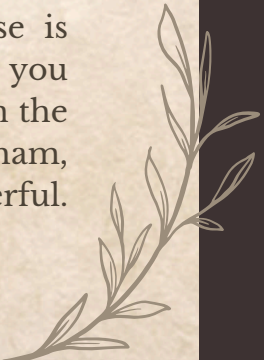
Exercise caution in your business affairs, for the world is full of trickery. But let this not blind you to what virtue there is; many persons strive for high ideals, and everywhere life is full of heroism. Be yourself. Especially do not feign affection. Neither be cynical about love; for in the face of all aridity and disenchantment, it is as perennial as the grass.

Take kindly the counsel of the years, gracefully surrendering the things of youth. Nurture strength of spirit to shield you in sudden misfortune. But do not distress yourself with dark imaginings. Many fears are born of fatigue and loneliness.

Beyond a wholesome discipline, be gentle with yourself. You are a child of the universe no less than the trees and the stars; you have a right to be here.

And whether or not it is clear to you, no doubt the universe is unfolding as it should. Therefore be at peace with God, whatever you conceive Him to be. And whatever your labors and aspirations, in the noisy confusion of life, keep peace in your soul. With all its sham, drudgery and broken dreams, it is still a beautiful world. Be cheerful. Strive to be happy.

by Max Ehrmann ©1927





Student Achievements

Have you got some news to share?
If so, please email Mrs Gross (jgross@cchs.co.uk) and attach a photo or logo, if applicable.

Aurelia (7C) won a district NODA award for Best Young Performer of the Year.

The award was for her performance as Lucy in *The Lion, The Witch and the Wardrobe*, a musical with the youth theatre group Offspringers.



Renee, 11H, continues to pursue her interest in amateur drama in yet another mainstream production with Chelmsford Young Generation Amateur Musical Society (CYGAMS). Established in 1968, CYGAMS is a music and drama charity for young people aged 8 to 18. They work with professional directors to perform two shows each year at the Chelmsford Theatre.

This April, they are performing *West Side Story* and Renee stars as Anita. You can watch Renee performing the very popular 'America' solo between Wednesday 15th to Saturday 18th April at Chelmsford Theatre. Tickets on sale now! www.chelmsfordtheatre.co.uk/events/west-side-story

On March 22nd, I swam 5 K to raise money for Cancer Research UK and Marie Curie and have so far raised £208. I want to extend my heartfelt thanks to everyone for their generous donations. If you haven't had the chance to donate yet, my fundraising page will remain active until March 31st. Thank you for your support!

https://www.justgiving.com/fundraising/camillacassinda-1767038402689?utm_medium=FA&utm_source=CL

Camilla, 12FSE





Student Achievements

Have you got some news to share?
 If so, please email Mrs Gross (jgross@cchs.co.uk) and attach a photo or logo, if applicable.

News

IN BRIEF

Appeal to smokers and ex-smokers

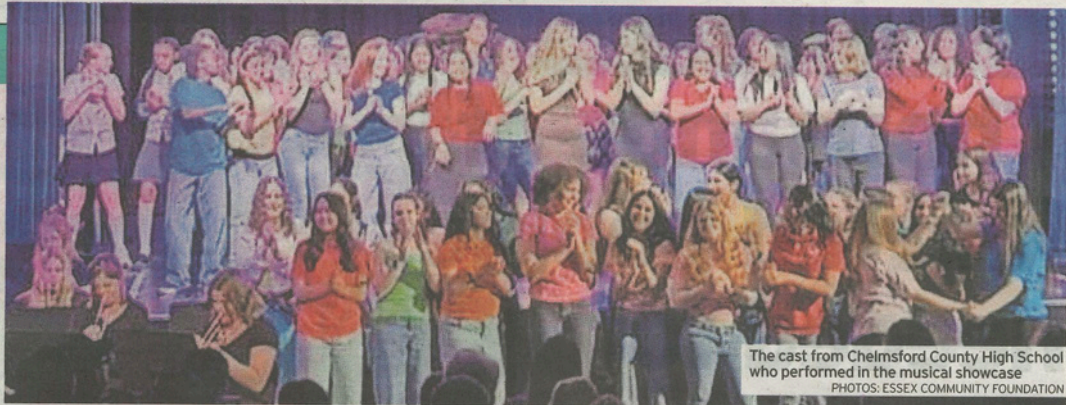
CURRENT and ex-smokers in Chelmsford are being urged to come forward for lung cancer screening. Health leaders are warning that early symptoms are often mistaken for less serious conditions. Lung cancer screening can detect cancer and other lung conditions before any noticeable symptoms appear. This early detection allows people to begin treatment sooner, leading to better long-term health outcomes and potentially saving lives. The free NHS Lung Cancer Screening is available to smokers and ex-smokers aged between 55 and 74.

So far, more than 281 cases of cancer have been identified through the programme across mid and south Essex. More than 75 per cent were found at an early stage (1 or 2). In the coming weeks, eligible residents of Chelmsford who are listed as current or former smokers on their GP records will receive an invitation to take part. Dr Malcolm Lawson, consultant respiratory physician and clinical lead for lung cancer for the East of England, said: "Lung cancer has been a difficult cancer to diagnose in the past.

"This is because many people aren't aware of all the symptoms that could be signs of lung cancer. We know that early treatment greatly improves the chances of living a longer, healthier life." Eligible residents will first have a telephone consultation with a specialist check nurse. For more information, call 0300 300 1557 or visit <https://eolungcancerscreening.nhs.uk>.

Temporary banking hub

CASH Access UK, the organisation set up to protect access to cash across the UK, has opened a temporary home for a banking hub in Maldon. The hub is in the Maldon District Council offices, which are situated in Princes Road. Customers of all major banks can visit the hub any weekday between 9am-5pm to carry out regular cash transactions as well as checking balances or paying bills, plus a community banker service. In Maldon the banks will visit on the following days: Monday, Lloyds; Tuesday, Santander; Wednesday, NatWest; Thursday, Barclays; Friday, Halifax.



The cast from Chelmsford County High School who performed in the musical showcase
 PHOTOS: ESSEX COMMUNITY FOUNDATION

Students raise £3k for Belinda memorial fund with musical showcase

A SPECTACULAR musical showcase staged by students from Chelmsford County High School for Girls has raised £3,000 for a fund set up in memory of Essex singer-songwriter Belinda Starling.

The show, which received a rapturous reception, was organised by students Ava Lambert, Katherine Carver and Ella Hale.

They decided that funds raised by the event would go to the Belinda Starling Memorial Fund, after searching for a cause that supports and inspires young people.

The fund, managed by Essex Community Foundation (ECF), honours the memory of Belinda Starling, a gifted singer-songwriter and author from Essex, who died in 2006, aged just 34, from complications after routine surgery.

The fund, set up by Belinda's family, gives grants to help young people pursue their ambitions and reach their full potential in music and the arts.

"Belinda's story really resonated with us, so we are delighted to have supported the fund in her memory." Stephen Lawlor, head teacher at Chelmsford County High School, said: "I have worked at CCHS for 15 years and I have never been so proud of our students. To put together a tremendous show for such a significant charity, the Belinda Starling Memorial Fund, speaks powerfully about the genu-



Talented young musicians from Chelmsford County High School performed throughout the event



Belinda Starling

ine good that young people can do. "The fact that the project was student-inspired, student-led and student-performed was utterly inspiring. So many students across different year groups were involved and the joy their performances brought to the audience was clear to see and hear."

Jo Macaulay, from Essex Community Foundation, said: "How fortunate we were to have witnessed the amazing talents of these young people. Events like this do far more than entertain, they bring people together, celebrate creativity and remind us of the power of community. Every ticket purchased and every donation given helps to keep Belinda's memory alive and helps

more young people achieve their dreams and ambitions."

Belinda's parents, David and Judy Starling, who were in the audience for the musical showcase, said: "Belinda would have enjoyed every minute of the evening, most likely singing along and tapping her toes."

"She would have been so honoured and grateful to everyone who has made donations in her memory, so that other young people can experience and excel in music and the arts, which were her passion."

"We are so grateful for such an amazing tribute and for a truly memorable evening." For more information about ECF and the Belinda Starling Memorial Fund visit essexcommunityfoundation.org.uk or call Jo Macaulay on 01245 355947.



Organisers Katherine Carver, Ella Hale and Ava Lambert

Artist of the week



ARTIST OF THE WEEK- Nicole in Year 11 for her mini acrylic painting. Well done.

CCHS RECOMMENDS

For budding classicists CCHS recommends the following online talks and podcasts which are examples of the really interesting work which is being done to bring new light to bear on aspects of the history of the ancient world. Thanks to Mr Lodge for his recommendations; he has many more excellent ideas for all those interested in Classics and Ancient History.

- Instant Classics with Mary Beard and Charlotte Higgins.
-
- Natalie Haynes Stands Up For The Classics covers ancient characters and topics with brisk humour.
-
- Past Lives is a recent podcast focusing on more overlooked figures in the ancient world, such as slaves.



POLICY REMINDER

In line with the NHS guidance, it is mandatory that any student experiencing diarrhoea and/or vomiting symptoms remains away from the school setting until they have been symptom-free for 48 hours (the *48-hour rule*) and are feeling well.

This policy helps reduce the spread of contagious illnesses such as stomach bugs (norovirus or rotavirus), which can spread quickly in classrooms.



[Click here for NHS information on this topic](#)

Arrival at and departure from school

We continue to engage with local residents (First Avenue, Corporation Road, Swiss Avenue, Westfield Avenue and Elms Drive) concerning their experiences during student arrival and departure periods.

Further to my communications on this matter previously, I note below key points of information to support CCHS families:

- Chelmsford City Council provided the following about the use of Rectory Lane car park:

“Please be advised there is a standard five-minute grace period on all vehicles to allow the purchase of a pay and display ticket. Therefore, any vehicles that are in the car park for the purposes of dropping off and / or picking up should fall within that grace period.”

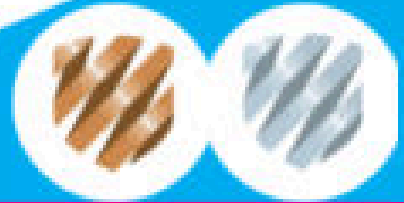
- As a result of the concerns raised by local residents regarding instances of inconsiderate and at times dangerous parking, South Essex Parking Partnership noted that their Parking Enforcement Team will be stepping up their patrols in the area.
- Our School Eco Committee is undertaking work, supported by the local authority, to explore how students travel to and from school, and how we could support both school families and the wider community with matters of travel, parking and congestion.
- Our Senior Leadership Team is working with local officials and local politicians on the matter of parking and congestion, and we have made suggestions to support this work, including the idea of creating a new entrance/exit point to the school site on the Chelmer Valley Road (east side of the campus).

Thank you, as ever, for your support in ensuring that we are mindful of local residents, as we work to keep people safe and relations cordial.

Please be aware of your surroundings when dropping off and picking up students to and from school. The area directly outside our school, in Broomfield Road, is a very busy thoroughfare. A vehicle which is not parked safely can be dangerous for other vehicles, as can dropping off/picking up students in the buslane.



ROAD SAFETY



INDUSTRIAL CADETS Parent Webinar

We are EDT!

The UK's largest STEM education charity.

Our aim is connecting young people with industries and inspiring STEM futures, with hands-on learning experience, supported by role models from some of the most exciting science and tech companies, global brands and innovative tech start-ups.



Webinar to provide parents and carers with more information about Career pathways in the STEM industry and how to support their child in exploring opportunities available.

What does this include?

- Information about apprenticeship Pathways
- Information about university pathways.



When is it?



Date: Wednesday 22nd April
Time: 17:00-18:00

Join the Call here:



Summer Term Parent Support Series

Free Parent Webinars

*Join us and Elevate Education for FREE
60- minute webinars designed to help you
support your child's studies at home.*

[Click here to Register](#)

In the Summer Term, we'll cover:

1. **Ask Me Anything (Live Q&A)**
-28th April @6:00pm (BST)
2. **How You Can Help Improve Your
Child's Memory**
- 12th May @6:00pm (BST)
3. **HowtoHelpYourChildAlleviate
Stress**
-9th June @6:00pm (BST)
**How to Get (And Keep!) Your
Child Motivated**
4. **How to Get (And Keep!) Your
Child Motivated**
-23rd June @6:00pm (BST)
5. **How You Can Set Your Child
Up for Success**
-7th July @6:00pm (BST)



CCHS Parents' Association

Spring Term Update

Last term the PA raised

£17,843

(Before expenses)

Thank you everyone for your amazing support & generosity

Items the PA have funded or agreed to fund last term:

- Elevate AI Education training
- PSHE materials
- Biology Microscopes
- Physics - 15 tablets to use with data loggers
- Physics - sound, rotary motion, voltage & current sensors
- E-book subscription
- Digital Theatre

Events coming up this half term:

- 26th April - Afternoon Tea
- 28th April - House Clothing Competition
- 28th April - Bubble Tea sale
- 30th April - CCHS Open Day

Role vacancies within the PA:

- Vice Chair
- Raffle organiser
- Store Cupboard Team member

Please join us we need new people, new ideas and all the different skills and experience people have to offer. If you are interested in finding out more please email Elaine pa@cchs.co.uk

Thank you all
for your amazing
dedication
help and
support

Please save your exam study books. A collection and sale will be organised soon.



CCHS News this week...

U13 ESSEX CRICKET TIER 2 FINALS

Posted: 14th April 2026

All the best to the CCHS Team, who are competing in the U13 Essex Cricket Tier 2 Finals today.

Sports - Chelmsford County High School for Girls



SENIOR SPEECH DAY

Posted: 15th April 2026

We are looking forward to our Speech Day, at Chelmsford Cathedral, later today - an opportunity to celebrate the work and achievements of former senior students, now alumnae.

Alumnae - Chelmsford County High School for Girls

The CCHS Institute - Chelmsford County High School for Girls



NIGHT AT THE MUSICALS - ESSEX CHRONICLE ARTICLE

Posted: 13th April 2026

Many congratulations to Ava, Katherine and Ella, who were featured in an article published in the Essex Chronicle about their fantastic 'Night at the Musicals' event. The event raised an impressive £3,000 for the Belinda Starling Memorial Fund. Please follow the link below to read the full article.

Essex Chronicle - Belinda Starling | April 2026

Categories: Uncategorized

SIAN CLEAVER, CCHS ALUMNA, AND HER WORK ON THE ARTEMIS II MISSION

Posted: 13th April 2026

The Times recently published an article on Sian Cleaver, CCHS alumna and spacecraft engineer, focusing on her role in supporting the Artemis II mission. In the article, it is noted that:

As a grammar school pupil at Chelmsford County High School for Girls, she thrived in her physics classes. "Because I went to an all-girls school, the idea of women being less interested in Stem [science, technology, engineering and maths] just wasn't a thing for me."

Link to article: [The Times Article - Sian Cleaver & Artemis II](#)

Categories: Uncategorized

AFTERNOON TEA



IN SUPPORT OF **CCHS** 
Parents' Association

SUNDAY 26TH APRIL
2PM TO 4PM IN THE MAIN HALL

ENJOY HOMEMADE AFTERNOON TEA AND HOUSE CAKE CREATIONS, PLUS LIVE MUSIC FROM CCHS STUDENTS.

JOIN US FOR A LOVELY FAMILY EVENT, WIN A HAMPER IN THE RAFFLE AND "GUESS THE WEIGHT OF THE CAKE" FOR YOUR CHANCE TO TAKE IT HOME.

VEGAN AND GLUTEN-FREE OPTIONS AVAILABLE.

FRIENDS AND FAMILY ARE WARMLY WELCOME (STUDENTS MUST BE ACCOMPANIED BY A GUARDIAN).

TICKETS £12

VIA PARENT PAY

WANT TO IMPROVE YOUR PERFORMANCE SKILLS?



TAKE TO THE STAGE AT THE Parents' Association Afternoon Tea

SUNDAY 26TH APRIL | 2-4PM | MAIN HALL, CCHS

Do you love to sing or play an instrument?
Come and perform in front of a friendly audience
at our PA Afternoon Tea to share your talent.

NO AUDITIONS, NO PRESSURE

HOW TO GET INVOLVED:

ASK A PARENT OR CARER WHO CAN ATTEND WITH YOU ON THE DAY TO CONTACT ELAINE VIA EMAIL AT [PA@CCHS.CO.UK](mailto:pa@cchs.co.uk). THEY'LL NEED TO INCLUDE WHAT YOU'D LIKE TO PERFORM & WHETHER YOU'LL BE SINGING OR PLAYING AN INSTRUMENT.

WE CAN'T WAIT TO HEAR FROM YOU!

Our Commitment to Girls' Education

We are proud to be a **founding member of the UK division of the International Coalition of Girls' Schools (ICGS)** – a global organisation dedicated to empowering girls through education and sharing research-based best practices.

The ICGS conducts extensive research into the benefits of an all-girls education, including improved academic outcomes, confidence, and leadership opportunities. These insights help us shape the very best learning environment for your daughter.

Why should parents engage with this research?

By exploring these studies, you can:

- Understand the proven advantages of an all-girls education.
- Gain practical strategies to support your daughter's learning journey.
- Stay informed about global trends and innovations in girls' education.

We regularly update our website with the latest research findings and will continue to share details when new studies are released.

Discover more here: <https://www.cchs.co.uk/about-us/girls-education-research/>

Together, we can ensure every student thrives and becomes a leader of tomorrow.

This week in PSHE

As we approach the examination period, PSHE will be temporarily suspended for all year groups. This is to ensure that Year 11 and Year 13 students receive uninterrupted lesson time as they prepare for their upcoming exams.

Key Dates to Note:

RTP Rota Resumes:

Friday, 1st May (Week A, Lesson 4) after the Easter break.

We appreciate your support in helping our students focus on their studies during this important time.

Mrs. Buckley.

Help us do more for your daughters – success through community



Success through Community

We are launching the CCHS Foundation¹ as a school community enterprise dedicated to raising funds, through voluntary contributions each year, to provide your daughters with more:

- more resources, including books, journals and websites
- more facilities, including
- ICT infrastructure and digital learning devices
- and more opportunities, including
- enrichment activities and educational visits

How to contribute financially towards the CCHS Foundation:

1. Set up a Regular payment by Standing Order with your Bank

This provides the Foundation with a regular income to allow us to plan ahead more effectively, and can be set to a payment amount, frequency and date to suit you. Please contact the school at finance@cchs.co.uk for our bank details.

2. Payment via ParentPay

You should find a payment item assigned to your daughter on ParentPay entitled 'Donate to CCHS Foundation'. Payment may be made via debit or credit card, and the amount can be edited to suit your wishes. Payments may be made as often as you like to suit your circumstances.

Additional payment items may be available at various times, 'giving days', for donating towards a specific fundraising goal.

3. Gift Aid

However you choose to contribute, if you are a UK tax payer, we can benefit further if you complete a Gift Aid Declaration form. This means that we can reclaim from HMRC any income tax you have paid on your donations to us, at a basic tax rate of 20%. The form can be accessed [here](#).

¹ The CCHS Foundation is not a distinct legal entity but a term we are using for this initiative under CCHS's exempt charitable status as an academy.

Ways to donate towards CCHS Capital projects:

1. TotalGiving

The School has set up an online fundraising page via [TotalGiving](#). This allows you to make regular or single contributions online using a credit or debit card. Gift Aid for eligible donations can also be processed through this route.

2. Giving through an employer scheme:

Payroll Giving

Payroll Giving (also known as ‘Give As You Earn’) is a valuable, long term source of revenue, providing regular income to help charities budget and plan more effectively. Your donation can often be made from your pre-tax income. Please ask your employer about this scheme.

As an academy, the School is considered to be an exempt charity and as such does not need to register with the Charity Commission. However, our charitable status is registered with HMRC. ‘Chelmsford County High School for Girls’ should be used as the reference on the payroll giving paperwork.

Company Gifts & Matched Funding

Some companies operate schemes allowing employees to nominate a charity for a company donation. This is often under a ‘matched funding’ programme whereby a company will match the donation made by the employee to their chosen charity. Please ask your employer about this scheme.

3. CAF Giving – more details

The Charities Aid Foundation (CAF) makes giving to charity easy. Through CAF, the value of your donation is increased via tax relief, and you have the option to donate anonymously.

4. Set up a regular payment by Standing Order with your Bank

This provides the School with a regular income to allow us to plan more effectively, and can be set to a payment amount, frequency and date to suit you. Please contact the school at finance@cchs.co.uk for our bank details.

5. Payment via ParentPay

You should find a payment item assigned to your daughter on [ParentPay](#) entitled ‘CCHS Buildings Appeal’. Payment may be made via debit or credit card, and the amount can be edited to suit your wishes. Payments may be made as often as you like to suit your circumstances.

Help us do more for your daughters – success through community

6. Gift Aid

Should you choose to contribute via bank standing order or ParentPay, if you are a UK tax payer we can benefit further if you complete a Gift Aid Declaration form. This means that we can reclaim from HMRC any income tax you have paid on your donations to us, at a basic tax rate of 20%. The form can be accessed [here](#).

Leaving a Legacy Please consider leaving the School a legacy in your will. If you leave a gift to a charity such as CCHS, its value will be deducted from your estate (your money, possessions and property) before Inheritance Tax is calculated.

Thank you, in advance, for any support you can provide to the students of CCHS

