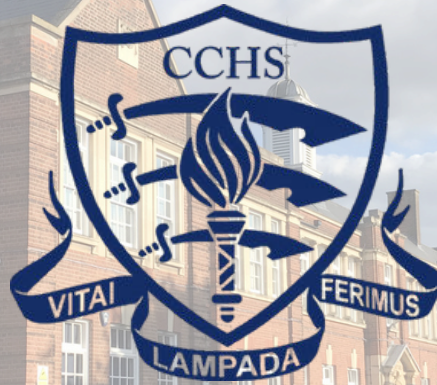


CCHS Laudatio

6th February 2026



Founded 1907

A leading academic school community,
inspired to excellence in education and opportunity for girls

MESSAGE FROM MR LAWLOR

Life in a school community is mostly filled with positivity, optimism and joy. How could it be otherwise with the energy and verve of young people, the commitment and talent of staff, and the support and encouragement of families.

Occasionally and unfortunately, this is interrupted by terribly sad events. I share with you that one of our local secondary schools suffered the most heartbreaking of incidents: the passing of one of their students. St John Payne Catholic School shared the news that one of their students passed away, following a brave battle with an illness.

We sent our collective condolences to the SJP school community, and our thoughts are with the family.

CCHS Values

CITIZENSHIP

Inspire future citizens to think for themselves and to act for others. (Amplification of School Vision: 'Developing the leaders of tomorrow')



DISTINCTION

Students will be provided with an outstanding education and we expect them to do their best in all endeavours. (Amplification of School Aim 1: 'The pursuit of excellence')



CHALLENGE

Students will be stimulated to acquire new knowledge & understanding and motivated to develop new skills & attributes. (Amplification of School Aim 2: 'Fulfilling individual potential')



DUTY

Students will conduct themselves with civility and compassion at all times, supporting each other and looking beyond themselves. (Amplification of School Aim 3: 'Contributing to the community')

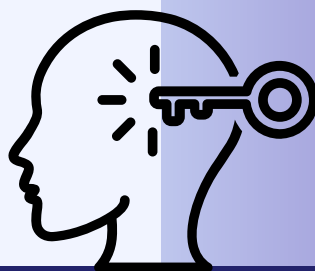
IMAGINATION

Enable students to explore new ideas and empathise with the thinking of others, without limitation or risk. (English, Sport and Arts subjects)



ENLIGHTENMENT

Equip students with the insight and determination to embrace new ideas, technology and innovation, enabling them to contribute to the ever-changing natural and physical world around them. (Mathematics, Computer Science and Natural Sciences subjects)



DIVERSITY

Provide students with the tools to respect and celebrate the great diversity of cultures, backgrounds and beliefs, within and beyond the School, whilst recognising that we have more in common than that which divides us. (Humanities, Languages and Social Sciences subjects)



Desiderata

GO PLACIDLY amid the noise

and the haste, and remember what peace there may be in silence. As far as possible, without surrender, be on good terms with all persons. Speak your truth quietly and clearly; and listen to others, even to the dull and the ignorant; they too have their story.

Avoid loud and aggressive persons; they are vexatious to the spirit. If you compare yourself with others, you may become vain or bitter, for always there will be greater and lesser persons than yourself.

Enjoy your achievements as well as your plans. Keep interested in your own career, however humble; it is a real possession in the changing fortunes of time.

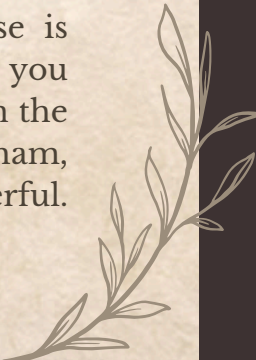
Exercise caution in your business affairs, for the world is full of trickery. But let this not blind you to what virtue there is; many persons strive for high ideals, and everywhere life is full of heroism. Be yourself. Especially do not feign affection. Neither be cynical about love; for in the face of all aridity and disenchantment, it is as perennial as the grass.

Take kindly the counsel of the years, gracefully surrendering the things of youth. Nurture strength of spirit to shield you in sudden misfortune. But do not distress yourself with dark imaginings. Many fears are born of fatigue and loneliness.

Beyond a wholesome discipline, be gentle with yourself. You are a child of the universe no less than the trees and the stars; you have a right to be here.

And whether or not it is clear to you, no doubt the universe is unfolding as it should. Therefore be at peace with God, whatever you conceive Him to be. And whatever your labors and aspirations, in the noisy confusion of life, keep peace in your soul. With all its sham, drudgery and broken dreams, it is still a beautiful world. Be cheerful. Strive to be happy.

by Max Ehrmann ©1927





Student Achievements

Have you got some news to share?
If so, please email Mrs Gross (jgross@cchs.co.uk) and attach a photo or logo, if applicable.

Rithika, (11S) and Hannah, (8G), participated in a fund-raising event organised by St Luke's Indian Orthodox Church, Chelmsford on 1st February 2026.

They baked and sold chocolate brownies and managed to raise £65 for the church .

Well done, Rithika and Hannah!



Aisha, 7F, recently completed a virtual work experience challenge with Digdata.

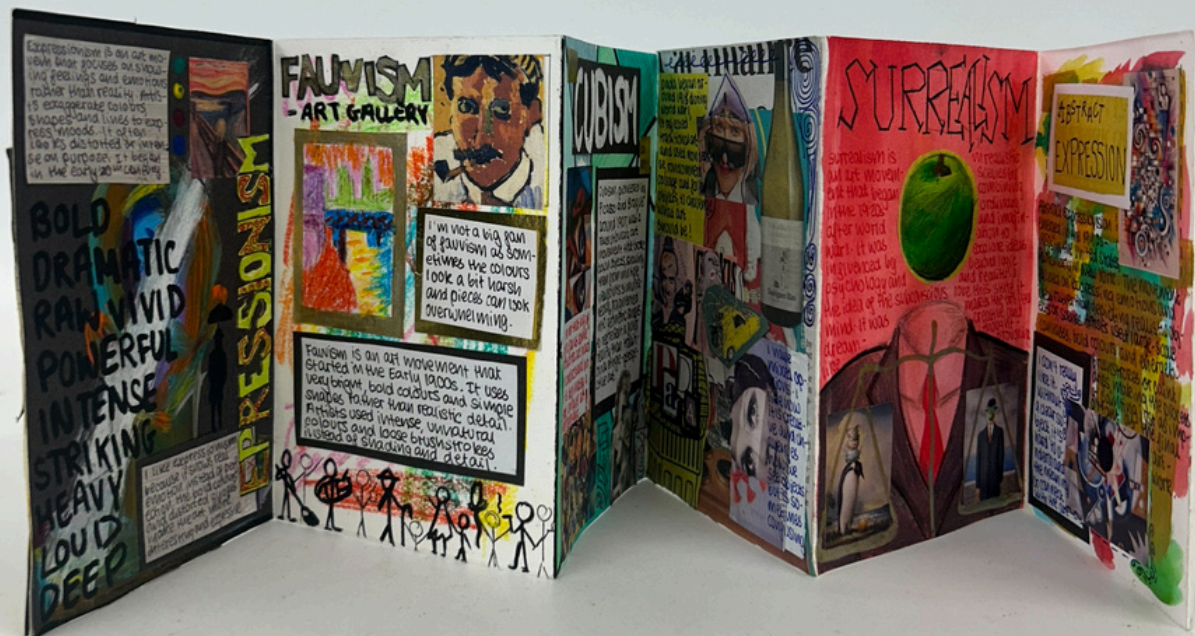
Well done, Aisha!



Our AOTW is Muna, 11F, for being a standout defender in a recent netball match. She consistently makes crucial interceptions and is always a positive presence in the team.



Artist of the week



ARTIST OF THE WEEK - Rhea, 8G, for her fantastic art history timeline. Well done.

DONUT SALE



Friday 13th Feb
In the Main Hall (at lunch)



Krispy Creme Glazed Donuts
(Contains Wheat Gluten, Egg & Milk)



Greggs Glazed Ring Donuts
(Vegan Friendly, Limited Availability)



POLICY REMINDER

In line with the NHS guidance, it is mandatory that any student experiencing diarrhoea and/or vomiting symptoms remains away from the school setting until they have been symptom-free for 48 hours (the *48-hour rule*) and are feeling well.

This policy helps reduce the spread of contagious illnesses such as stomach bugs (norovirus or rotavirus), which can spread quickly in classrooms.



[Click here for NHS information on this topic](#)



The full experience of **Adventure Island** ... at a lower price

Exclusive CCHS PA price



Why you'll love it:

- **Enjoy £8 off the usual £28 gate price**
- **Valid throughout the 2026 season**
- **Each voucher = a wristband for a full day of fun!**

ORDER NOW ON PARENTPAY

How to get your reduced price wristbands:

Order via ParentPay. Vouchers will be available for collection from the Finance Office the week following purchase.

We have limited availability, so once they're gone, they're gone. 😊 Vouchers are non-refundable.



adventureisland.co.uk

Arrival at and departure from school

We continue to engage with local residents (First Avenue, Corporation Road, Swiss Avenue, Westfield Avenue and Elms Drive) concerning their experiences during student arrival and departure periods.

Further to my communications on this matter previously, I note below key points of information to support CCHS families:

- Chelmsford City Council provided the following about the use of Rectory Lane car park:

“Please be advised there is a standard five-minute grace period on all vehicles to allow the purchase of a pay and display ticket. Therefore, any vehicles that are in the car park for the purposes of dropping off and / or picking up should fall within that grace period.”

- As a result of the concerns raised by local residents regarding instances of inconsiderate and at times dangerous parking, South Essex Parking Partnership noted that their Parking Enforcement Team will be stepping up their patrols in the area.
- Our School Eco Committee is undertaking work, supported by the local authority, to explore how students travel to and from school, and how we could support both school families and the wider community with matters of travel, parking and congestion.
- Our Senior Leadership Team is working with local officials and local politicians on the matter of parking and congestion, and we have made suggestions to support this work, including the idea of creating a new entrance/exit point to the school site on the Chelmer Valley Road (east side of the campus).

Thank you, as ever, for your support in ensuring that we are mindful of local residents, as we work to keep people safe and relations cordial.

.....

Please be aware of your surroundings when dropping off and picking up students to and from school. The area directly outside our school, in Broomfield Road, is a very busy thoroughfare. A vehicle which is not parked safely can be dangerous for other vehicles, as can dropping off/picking up students in the buslane.



ROAD SAFETY

CCHS News this week...

MATHS FEST 2026

Posted: 2nd February 2026

Our Year 12 students are looking forward to 'Maths Fest 2026' at The Royal Institution today.

MathsFest 2026

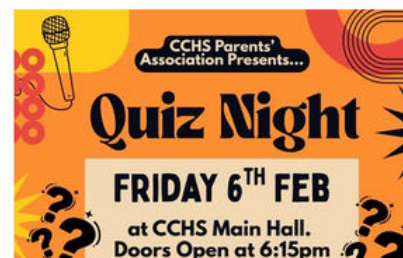


CCHS PARENTS' ASSOCIATION QUIZ NIGHT

Posted: 2nd February 2026

A reminder that the CCHS Parents' Association are hosting a Quiz Night on Friday. All parents, teachers, students and friends welcome! Please see the poster below for further details.

Parents' Association - Chelmsford County High School for Girls (cchs.co.uk)



YEARS 9 & 12 CAREERS EVENING

Posted: 5th February 2026

Our Careers Evening for Years 9 and 12 is taking place today. Thank you to all the companies, organisations and individuals who are supporting us.

CCHS Futures



YEARS 10 AND 11 HOUSE DEBATE

Posted: 3rd February 2026

We are looking forward to the Year 10 and Year 11 House debate competition today. Good luck to all students taking part!

House System - Chelmsford County High School for Girls



JUNIOR CHEMISTRY CHALLENGE

Posted: 3rd February 2026

Good luck to our Year 10 students who are participating in the Junior Chemistry Challenge today.

Junior Chemistry Challenge



INTERMEDIATE UK LINGUISTICS OLYMPIAD

Posted: 6th February 2026

Fifteen students across Years 11 and 12 are taking part in the Intermediate UK Linguistics Olympiad today. They'll be tackling 4 exercises on a range of languages that they've never seen before - and possibly never even heard of! We wish them the best of luck.



YEARS 12 AND 13 HOUSE DEBATE

Posted: 5th February 2026

We are looking forward to the Year 12 and Year 13 House debate competition today. Good luck to all students taking part!

House System - Chelmsford County High School for Girls



YEAR 10 GCSE DRAMA & THEATRE STUDIES TRIP

Posted: 5th February 2026

Our Year 10 GCSE Drama & Theatre Studies students are looking forward to seeing 'The Woman in Black' at Chelmsford Theatre today.



Our Commitment to Girls' Education

We are proud to be a **founding member of the UK division of the International Coalition of Girls' Schools (ICGS)** – a global organisation dedicated to empowering girls through education and sharing research-based best practices.

The ICGS conducts extensive research into the benefits of an all-girls education, including improved academic outcomes, confidence, and leadership opportunities. These insights help us shape the very best learning environment for your daughter.

Why should parents engage with this research?

By exploring these studies, you can:

- ✓ Understand the proven advantages of an all-girls education.
- ✓ Gain practical strategies to support your daughter's learning journey.
- ✓ Stay informed about global trends and innovations in girls' education.

We regularly update our website with the latest research findings and will continue to share details when new studies are released.

👉 **Discover more here:** <https://www.cchs.co.uk/about-us/girls-education-research/>

Together, we can ensure every student thrives and becomes a leader of tomorrow.

This week in PSHE

YEAR GROUP	THURSDAY 12 th FEBRUARY				PERIOD	4
	A	C	F	G	H	S
7	Peer pressure			Puberty pt2		
8	Unhealthy thoughts		Worry Tree & Stress bucket.			
9	Introduction to Options with Mrs Cross (10mins) Protecting Your Health: Knowing the Signs and Seeking Help					
10	Understanding safe and respectful relationships.					
11	Power Hour with Mr Selby					
12	Model United Nations					
13	Safe decision-making at festivals and nights out.					



Elevate Education's Spring Term

Parent Webinar Series

Elevate Education delivers high-impact workshops to our students that help to develop their study skills, motivation, and exam preparation. Over the next term, you're invited to join their parent webinar series, where you can help support your child at home by reinforcing the skills they're learning at school.

How You Can Help Improve Your Child's Memory

10th February 6:00pm (GMT)

How You Can Help Your Child Prepare for Exams

3rd March 6:00pm (GMT)

How You Can Support Your Child During Exams

17th March 6:00pm (GMT)

Register today at: <https://go.elevateeducation.com/ukschoolwebinar>

CCHS PA PRE-LOVED UNIFORM SALE

FEBRUARY 2026

Please email the completed form to
cchssecondhanduniform@yahoo.com
by Sunday 22nd February

As you know, CCHS PA hold regular pre-loved uniform sales online. Last year, we filled around 100 orders and made around **£3,000** for the PA.

We are delighted to have saved £100s for those that have bought from us and reduced the amount of used clothing going to landfill.

- For sizing, please refer to our supplier's website www.monkhouse.com
 - We process orders on a first come first served basis. Please understand that we may not have all items that you request as we are dependent on the donations we receive.
 - We will always send you the best quality clothing that we have available, but please keep in mind that this is pre-loved uniform and the condition of items can vary.
 - Please note that PE tops and sweatshirts often have names embroidered on them. You can either unpick and re-embroider your daughter's name or use a sew-on or iron-on label over the top of the old name.
 - Once we check our stock against your requested items, we will email you to confirm the total price to pay and ask you to pay online to the PA account.
 - Once payment is received, the orders will be packaged and delivered to the school. We will contact you to confirm collection arrangements.
 - Returns cannot be accepted.
-

If you need name labels for uniform, bags, drinks bottles, etc please use Stikins - the PA get commission on your purchase and you don't need to do any sewing as the label simply sticks in!



REDUCE REUSE RECYCLE

As your daughter outgrows their uniform, please donate it for sale by the PA

Only clean, good quality items please – no stains, marks or rips

Please place all donations in the green wheelie bins provided



Help us do more for your daughters – success through community



Success through Community

We are launching the CCHS Foundation¹ as a school community enterprise dedicated to raising funds, through voluntary contributions each year, to provide your daughters with more:

- more resources, including books, journals and websites
- more facilities, including
- ICT infrastructure and digital learning devices
- and more opportunities, including
- enrichment activities and educational visits

How to contribute financially towards the CCHS Foundation:

1. Set up a Regular payment by Standing Order with your Bank

This provides the Foundation with a regular income to allow us to plan ahead more effectively, and can be set to a payment amount, frequency and date to suit you. Please contact the school at finance@cchs.co.uk for our bank details.

2. Payment via ParentPay

You should find a payment item assigned to your daughter on [ParentPay](#) entitled 'Donate to CCHS Foundation'. Payment may be made via debit or credit card, and the amount can be edited to suit your wishes. Payments may be made as often as you like to suit your circumstances.

Additional payment items may be available at various times, 'giving days', for donating towards a specific fundraising goal.

3. Gift Aid

However you choose to contribute, if you are a UK tax payer, we can benefit further if you complete a Gift Aid Declaration form. This means that we can reclaim from HMRC any income tax you have paid on your donations to us, at a basic tax rate of 20%. The form can be accessed [here](#).

¹ The CCHS Foundation is not a distinct legal entity but a term we are using for this initiative under CCHS's exempt charitable status as an academy.

Ways to donate towards CCHS Capital projects:

1. TotalGiving

The School has set up an online fundraising page via [TotalGiving](#). This allows you to make regular or single contributions online using a credit or debit card. Gift Aid for eligible donations can also be processed through this route.

2. Giving through an employer scheme:

Payroll Giving

Payroll Giving (also known as ‘Give As You Earn’) is a valuable, long term source of revenue, providing regular income to help charities budget and plan more effectively. Your donation can often be made from your pre-tax income. Please ask your employer about this scheme.

As an academy, the School is considered to be an exempt charity and as such does not need to register with the Charity Commission. However, our charitable status is registered with HMRC. ‘Chelmsford County High School for Girls’ should be used as the reference on the payroll giving paperwork.

Company Gifts & Matched Funding

Some companies operate schemes allowing employees to nominate a charity for a company donation. This is often under a ‘matched funding’ programme whereby a company will match the donation made by the employee to their chosen charity. Please ask your employer about this scheme.

3. CAF Giving – more details

The Charities Aid Foundation (CAF) makes giving to charity easy. Through CAF, the value of your donation is increased via tax relief, and you have the option to donate anonymously.

4. Set up a regular payment by Standing Order with your Bank

This provides the School with a regular income to allow us to plan more effectively, and can be set to a payment amount, frequency and date to suit you. Please contact the school at finance@cchs.co.uk for our bank details.

5. Payment via ParentPay

You should find a payment item assigned to your daughter on [ParentPay](#) entitled ‘CCHS Buildings Appeal’. Payment may be made via debit or credit card, and the amount can be edited to suit your wishes. Payments may be made as often as you like to suit your circumstances.

Help us do more for your daughters – success through community

6. Gift Aid

Should you choose to contribute via bank standing order or ParentPay, if you are a UK tax payer we can benefit further if you complete a Gift Aid Declaration form. This means that we can reclaim from HMRC any income tax you have paid on your donations to us, at a basic tax rate of 20%. The form can be accessed [here](#).

Leaving a Legacy Please consider leaving the School a legacy in your will. If you leave a gift to a charity such as CCHS, its value will be deducted from your estate (your money, possessions and property) before Inheritance Tax is calculated.

Thank you,in advance, for any support you can provide to the students of CCHS

