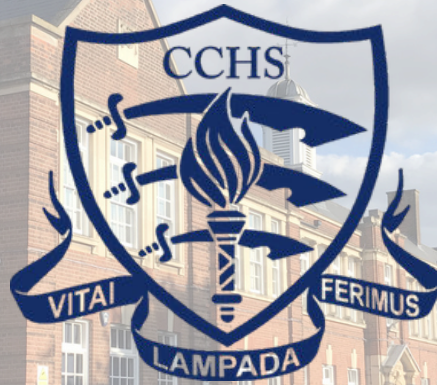


CCHS Laudatio

13th February 2026



Founded 1907

A leading academic school community,
inspired to excellence in education and opportunity for girls

MESSAGE FROM MR LAWLOR

Firstly, we are a state school, which means we contribute to a sector educating 94% of children in the country. Secondly, we are a girls' school, which means we are part of a historical struggle and an educational insurgency. Thirdly, we are a grammar school, which means we belong to a tradition of academic excellence and social mobility. These three characteristics define our reality. In February 2023, we became partners with Future Stories Community Enterprise (FSCE), demonstrating our determination to be an actively socially inclusive school community. From September 2023, we began using a new CCHS Entrance Test, provided by our FSCE partners. This became our Leaders of Tomorrow programme:

[Chelmsford County High School for Girls | Leaders of Tomorrow – Chelmsford County High School for Girls](#)

The CCHS Entrance Test

The test as part of our school vision and mission:

·Our 'developing the leaders of tomorrow' vision amplifies and fortifies the ethos which drives the Future Stories Community Enterprise entrance test.

·Our school mission – a progressive grammar school community, committed to excellence in girls' education and empowerment – inspires us to innovate and seize opportunities to support girls from all social backgrounds.

The test as part of a broader social mobility ambition:

·As a partner with the Future Stories Community Enterprise, we demonstrate our complete commitment to be an actively socially inclusive grammar school.

·We are a leading part of forging a new narrative for grammar schools – communities for and of social mobility.

The test as an experience:

·Complements the knowledge and skills embedded in the Key Stage 2 Primary Curriculum, with a focus on English, mathematics and creative writing.

·Assesses natural curriculum learning experiences.

I encourage you to read the 6th February 2026 article by Nicola Woolcock in The Times, which can be found on our Leaders of Tomorrow webpage: [Chelmsford County High School for Girls | Leaders of Tomorrow – Chelmsford County High School for Girls](#)

This article provides an excellent background to this education innovation, as well as a description of the educational philosophy which drives this work.

Thank you to staff, students and CCHS families for all the hard work, commitment and support across the first part of the Spring Term. Best wishes to all for the February half-term week.



CCHS Inspires

A leading academic school community, inspired to excellence in education and opportunity for girls

PASTORAL SUPPORT & EMPOWERMENT

- Actively socially inclusive with our Future Stories Entrance Test and Leaders of Tomorrow Programme
- Outstanding tailored Pastoral provision, including a SEND Quiet Room, Pastoral Hub and strong links with external services
- Carnegie Centre of Excellence School Mental Health Gold Award
- Carers Trust & The Children's Society Young Carers Award
- The Great British Schools Guide named CCHS as one of England's most well-behaved and safest schools

ACADEMIC STRENGTH & SUCCESS

- Top 20 state school nationally, The Sunday Times Parent Power Tables 2026, 2025, 2024 and 2023
- The Times Teaching Institute Subject Marks, in recognition of outstanding teaching
- National Association for Able Children in Education Challenge Award
- CCHS Institute, providing academic lectures & seminars and essay competitions
- CCHS Aspire, supporting our able students with applications to Cambridge, Oxford and other Russell Group universities

ENRICHMENT OPPORTUNITY & ADVENTURE

- House Community, building friendships across year groups and bringing joyful competition
 - C. CLURE, MARIE • H. HESBURN, AUDREY • S. STEWART, MIRANDA • F. FRANK, ANNE • G. GREY, THOMPSON, TANNI • A. ANGELLOU, MAYA
- Enrichment Days across the academic year for all key stages
- A host of lunchtime clubs & societies for all year groups
- Our Sixth Form Electives Programme, designed to complement academic study with creativity, wellbeing and real-world insight
- Educational Trips, across all key stages, including a Sixth Form expedition with Operation Wallacea



CCHS Values

CITIZENSHIP

Inspire future citizens to think for themselves and to act for others. (Amplification of School Vision: 'Developing the leaders of tomorrow')



DISTINCTION

Students will be provided with an outstanding education and we expect them to do their best in all endeavours. (Amplification of School Aim 1: 'The pursuit of excellence')



CHALLENGE

Students will be stimulated to acquire new knowledge & understanding and motivated to develop new skills & attributes. (Amplification of School Aim 2: 'Fulfilling individual potential')



DUTY

Students will conduct themselves with civility and compassion at all times, supporting each other and looking beyond themselves. (Amplification of School Aim 3: 'Contributing to the community')

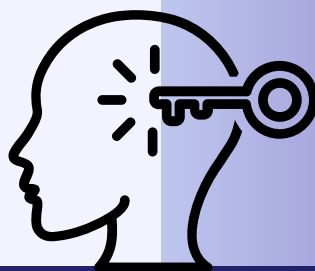
IMAGINATION

Enable students to explore new ideas and empathise with the thinking of others, without limitation or risk. (English, Sport and Arts subjects)



ENLIGHTENMENT

Equip students with the insight and determination to embrace new ideas, technology and innovation, enabling them to contribute to the ever-changing natural and physical world around them. (Mathematics, Computer Science and Natural Sciences subjects)



DIVERSITY

Provide students with the tools to respect and celebrate the great diversity of cultures, backgrounds and beliefs, within and beyond the School, whilst recognising that we have more in common than that which divides us. (Humanities, Languages and Social Sciences subjects)



Desiderata

GO PLACIDLY amid the noise

and the haste, and remember what peace there may be in silence. As far as possible, without surrender, be on good terms with all persons. Speak your truth quietly and clearly; and listen to others, even to the dull and the ignorant; they too have their story.

Avoid loud and aggressive persons; they are vexatious to the spirit. If you compare yourself with others, you may become vain or bitter, for always there will be greater and lesser persons than yourself.

Enjoy your achievements as well as your plans. Keep interested in your own career, however humble; it is a real possession in the changing fortunes of time.

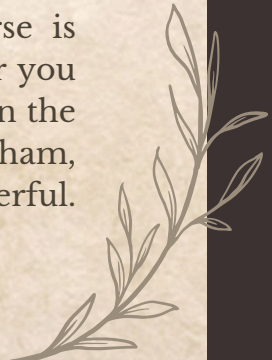
Exercise caution in your business affairs, for the world is full of trickery. But let this not blind you to what virtue there is; many persons strive for high ideals, and everywhere life is full of heroism. Be yourself. Especially do not feign affection. Neither be cynical about love; for in the face of all aridity and disenchantment, it is as perennial as the grass.

Take kindly the counsel of the years, gracefully surrendering the things of youth. Nurture strength of spirit to shield you in sudden misfortune. But do not distress yourself with dark imaginings. Many fears are born of fatigue and loneliness.

Beyond a wholesome discipline, be gentle with yourself. You are a child of the universe no less than the trees and the stars; you have a right to be here.

And whether or not it is clear to you, no doubt the universe is unfolding as it should. Therefore be at peace with God, whatever you conceive Him to be. And whatever your labors and aspirations, in the noisy confusion of life, keep peace in your soul. With all its sham, drudgery and broken dreams, it is still a beautiful world. Be cheerful. Strive to be happy.

by Max Ehrmann ©1927



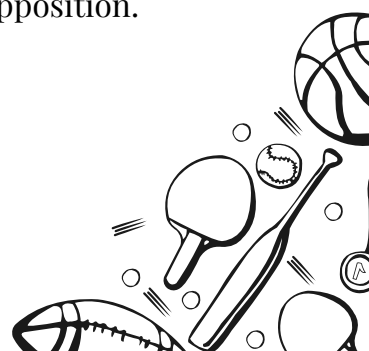


Student Achievements

Have you got some news to share?
If so, please email Mrs Gross (jgross@cchs.co.uk) and attach a photo or logo, if applicable.



Our AOTW is Lilly, 11H, for her incredible performance playing out of position as a GA in a recent MESSSA league division 1 game. Lilly's hard work and determination contributed to her team winning and she was also selected as 'player of the match' from the opposition.



Anthea Bell Prize for Young Translators



THE QUEEN'S COLLEGE
UNIVERSITY OF OXFORD

The Anthea Bell Competition is now open!

All competition materials are available on Teams.

The deadline for entries is 20 March 2026. Please make sure you have selected the correct level for your year group before starting.

All submissions must be emailed to dsilva@cchs.co.uk or handed in to the school main office no later than 20 March 2026.

Rules:

Students must receive no assistance from teachers or parents.
Dictionaries and other reference resources may be used.

AI and machine translation tools must not be used. Judges will check for AI-generated work.

If submitting handwritten work, please write your name and form on the back of your entry.

Good luck to everyone taking part!

Artist *of the week*



ARTIST OF THE WEEK- Amber, in Year 12, for her fantastic Lino print
based on artist Karin Rytter.

POLICY REMINDER

In line with the NHS guidance, it is mandatory that any student experiencing diarrhoea and/or vomiting symptoms remains away from the school setting until they have been symptom-free for 48 hours (the *48-hour rule*) and are feeling well.

This policy helps reduce the spread of contagious illnesses such as stomach bugs (norovirus or rotavirus), which can spread quickly in classrooms.



[Click here for NHS information on this topic](#)



The full experience of **Adventure Island** ... at a lower price

Exclusive CCHS PA price



Why you'll love it:

- **Enjoy £8 off the usual £28 gate price**
- **Valid throughout the 2026 season**
- **Each voucher = a wristband for a full day of fun!**

ORDER NOW ON PARENTPAY

How to get your reduced price wristbands:

Order via ParentPay. Vouchers will be available for collection from the Finance Office the week following purchase.

We have limited availability, so once they're gone, they're gone. 😊 Vouchers are non-refundable.



adventureisland.co.uk

Arrival at and departure from school

We continue to engage with local residents (First Avenue, Corporation Road, Swiss Avenue, Westfield Avenue and Elms Drive) concerning their experiences during student arrival and departure periods.

Further to my communications on this matter previously, I note below key points of information to support CCHS families:

- Chelmsford City Council provided the following about the use of Rectory Lane car park:

"Please be advised there is a standard five-minute grace period on all vehicles to allow the purchase of a pay and display ticket. Therefore, any vehicles that are in the car park for the purposes of dropping off and / or picking up should fall within that grace period."

- As a result of the concerns raised by local residents regarding instances of inconsiderate and at times dangerous parking, South Essex Parking Partnership noted that their Parking Enforcement Team will be stepping up their patrols in the area.
- Our School Eco Committee is undertaking work, supported by the local authority, to explore how students travel to and from school, and how we could support both school families and the wider community with matters of travel, parking and congestion.
- Our Senior Leadership Team is working with local officials and local politicians on the matter of parking and congestion, and we have made suggestions to support this work, including the idea of creating a new entrance/exit point to the school site on the Chelmer Valley Road (east side of the campus).

Thank you, as ever, for your support in ensuring that we are mindful of local residents, as we work to keep people safe and relations cordial.

.....

Please be aware of your surroundings when dropping off and picking up students to and from school. The area directly outside our school, in Broomfield Road, is a very busy thoroughfare. A vehicle which is not parked safely can be dangerous for other vehicles, as can dropping off/picking up students in the buslane.



ROAD SAFETY

CCHS News this week...

CHILDREN'S MENTAL HEALTH WEEK

Posted: 9th February 2026

From Monday 9th February to Friday 13th February it is Place2Be's Children's Mental Health Week. This year, the theme is 'This Is My Place' exploring our sense of belonging as individuals. As a school, we will be exploring this theme across the week in Form Time – celebrating the importance of self care and mental health awareness.



HOUSE PANCAKES

Posted: 10th February 2026

We are looking forward to House Pancakes today! Best of luck to everyone participating in the competition.

House System



OPERATION WALLACEA MEETING – MEXICO 2027

Posted: 10th February 2026

We are looking forward to this evening's information evening, where we will inform interested students and their parents about the exciting A level Mexico adventure taking place in July 2027.



INTERNATIONAL ECONOMICS STUDENT-LED ONLINE CONFERENCE

Posted: 11th February 2026

Our Year 12 Economics students are attending a student-led Business Economics online conference today.

Chelmsford County High School for Girls | Economics



MODEL UNITED NATIONS (MUN) CONFERENCE

Posted: 12th February 2026

Our Year 12 students are holding their Model United Nations (MUN) Conference today.

Model United Nations | United Nations

The CCHS Institute – Chelmsford County High School for Girls



SAFER INTERNET DAY

Posted: 10th February 2026

"Safer Internet Day 2026 takes place today, 10th of February, based around the theme 'Smart tech, safe choices – Exploring the safe and responsible use of AI'. Over the years, Safer Internet Day has become a landmark event in the online safety calendar. Starting as an initiative of the EU SafeBorders project in 2004 and taken up by the Insafe network as one of its earliest actions in 2005, Safer Internet Day has grown beyond its traditional geographic zone and is now celebrated in approximately 170 countries worldwide."

Safer Internet Day 2026 – UK Safer Internet Centre

Safer Internet Day 2026 Tuesday 10 February

Coordinated by the UK Safer Internet Centre

saferinternetday.org.uk

Our Commitment to Girls' Education

We are proud to be a **founding member of the UK division of the International Coalition of Girls' Schools (ICGS)** – a global organisation dedicated to empowering girls through education and sharing research-based best practices.

The ICGS conducts extensive research into the benefits of an all-girls education, including improved academic outcomes, confidence, and leadership opportunities. These insights help us shape the very best learning environment for your daughter.

Why should parents engage with this research?

By exploring these studies, you can:

- ✓ Understand the proven advantages of an all-girls education.
- ✓ Gain practical strategies to support your daughter's learning journey.
- ✓ Stay informed about global trends and innovations in girls' education.

We regularly update our website with the latest research findings and will continue to share details when new studies are released.

👉 **Discover more here:** <https://www.cchs.co.uk/about-us/girls-education-research/>

Together, we can ensure every student thrives and becomes a leader of tomorrow.

This week in PSHE

As we approach the examination period, PSHE will be temporarily suspended for all year groups. This is to ensure that Year 11 and Year 13 students receive uninterrupted lesson time as they prepare for their upcoming exams.

Key Dates to Note:

📌 One-off RTP Session:

Wednesday, 25th March (Lesson 1) – Form tutors will use this time to discuss students' TA2 progress.

📌 RTP Rota Resumes:

Friday, 1st May (Week A, Lesson 4) after the Easter break.

We appreciate your support in helping our students focus on their studies during this important time.

Mrs. Buckley.

CCHS Parents' Association

Spring Half Term Update

So far this term the PA has raised

£10,262

(Before expenses)



Thank you everyone for your amazing support & generosity



Items the PA have funded or agreed to fund this half term term:

- Elevate AI Education training
- PSHE materials
- Biology Microscopes
- Physics - 15 tablets to use with data loggers
- Physics - sound, rotary motion, voltage & current sensors
- E-book subscription
- Digital Theatre



Events coming up next half term:

- 13th March - Mothers Day Sale
- 20th March - Spring Disco year 7-9
- 25th & 26th March - Spring Concert
- 27th March - Donut or Bubble Tea Sale



Thank you all
for your amazing
dedication
help and
support

Role vacancies within the PA:

- Vice Chair
- Raffle organiser
- Store Cupboard Team member
- Preloved Uniform Team member

Please save your exam study
books. A collection and sale
will be organised soon.

Please join us we need new people, new ideas and all the different skills and experience people have to offer. If you are interested in finding out more please email Elaine pa@cchs.co.uk





Elevate Education's Spring Term

Parent Webinar Series

Elevate Education delivers high-impact workshops to our students that help to develop their study skills, motivation, and exam preparation. Over the next term, you're invited to join their parent webinar series, where you can help support your child at home by reinforcing the skills they're learning at school.

How You Can Help Your Child Prepare for Exams

3rd March 6:00pm (GMT)

How You Can Support Your Child During Exams

17th March 6:00pm (GMT)

Register today at: <https://go.elevateeducation.com/ukschoolwebinar>

CCHS PA PRE-LOVED UNIFORM SALE

FEBRUARY 2026

Please email the completed form to
cchssecondhanduniform@yahoo.com
by Sunday 22nd February

As you know, CCHS PA hold regular pre-loved uniform sales online. Last year, we filled around 100 orders and made around **£3,000** for the PA.

We are delighted to have saved £100s for those that have bought from us and reduced the amount of used clothing going to landfill.

- For sizing, please refer to our supplier's website www.monkhouse.com
 - We process orders on a first come first served basis. Please understand that we may not have all items that you request as we are dependent on the donations we receive.
 - We will always send you the best quality clothing that we have available, but please keep in mind that this is pre-loved uniform and the condition of items can vary.
 - Please note that PE tops and sweatshirts often have names embroidered on them. You can either unpick and re-embroider your daughter's name or use a sew-on or iron-on label over the top of the old name.
 - Once we check our stock against your requested items, we will email you to confirm the total price to pay and ask you to pay online to the PA account.
 - Once payment is received, the orders will be packaged and delivered to the school. We will contact you to confirm collection arrangements.
 - Returns cannot be accepted.
-

If you need name labels for uniform, bags, drinks bottles, etc please use Stikins - the PA get commission on your purchase and you don't need to do any sewing as the label simply sticks in!



FUNDRAISING WITH NAME LABELS

STIKINS® Name Labels

Stikins Actual Size

SIMPLY STICK IN NO SEWING & NO IRONING

Save time and money with one multipurpose name label for clothes, shoes, lunch boxes, and all school items

PLEASE QUOTE OUR FUNDRAISING NUMBER **4133**

when you buy Stikins name labels and we will receive 30% commission

TO ORDER VISIT: **WWW.STIKINS.CO.UK**

11,000

StikinsNameLabels StikinsLabels stikinsnamelabels

REDUCE REUSE RECYCLE

As your daughter outgrows their uniform, please donate it for sale by the PA

Only clean, good quality items please – no stains, marks or rips

Please place all donations in the green wheelie bins provided



Help us do more for your daughters – success through community



Success through Community

We are launching the CCHS Foundation¹ as a school community enterprise dedicated to raising funds, through voluntary contributions each year, to provide your daughters with more:

- more resources, including books, journals and websites
- more facilities, including
- ICT infrastructure and digital learning devices
- and more opportunities, including
- enrichment activities and educational visits

How to contribute financially towards the CCHS Foundation:

1. Set up a Regular payment by Standing Order with your Bank

This provides the Foundation with a regular income to allow us to plan ahead more effectively, and can be set to a payment amount, frequency and date to suit you. Please contact the school at finance@cchs.co.uk for our bank details.

2. Payment via ParentPay

You should find a payment item assigned to your daughter on [ParentPay](#) entitled 'Donate to CCHS Foundation'. Payment may be made via debit or credit card, and the amount can be edited to suit your wishes. Payments may be made as often as you like to suit your circumstances.

Additional payment items may be available at various times, 'giving days', for donating towards a specific fundraising goal.

3. Gift Aid

However you choose to contribute, if you are a UK tax payer, we can benefit further if you complete a Gift Aid Declaration form. This means that we can reclaim from HMRC any income tax you have paid on your donations to us, at a basic tax rate of 20%. The form can be accessed [here](#).

¹ The CCHS Foundation is not a distinct legal entity but a term we are using for this initiative under CCHS's exempt charitable status as an academy.

Ways to donate towards CCHS Capital projects:

1. TotalGiving

The School has set up an online fundraising page via [TotalGiving](#). This allows you to make regular or single contributions online using a credit or debit card. Gift Aid for eligible donations can also be processed through this route.

2. Giving through an employer scheme:

Payroll Giving

Payroll Giving (also known as ‘Give As You Earn’) is a valuable, long term source of revenue, providing regular income to help charities budget and plan more effectively. Your donation can often be made from your pre-tax income. Please ask your employer about this scheme.

As an academy, the School is considered to be an exempt charity and as such does not need to register with the Charity Commission. However, our charitable status is registered with HMRC. ‘Chelmsford County High School for Girls’ should be used as the reference on the payroll giving paperwork.

Company Gifts & Matched Funding

Some companies operate schemes allowing employees to nominate a charity for a company donation. This is often under a ‘matched funding’ programme whereby a company will match the donation made by the employee to their chosen charity. Please ask your employer about this scheme.

3. CAF Giving – more details

The Charities Aid Foundation (CAF) makes giving to charity easy. Through CAF, the value of your donation is increased via tax relief, and you have the option to donate anonymously.

4. Set up a regular payment by Standing Order with your Bank

This provides the School with a regular income to allow us to plan more effectively, and can be set to a payment amount, frequency and date to suit you. Please contact the school at finance@cchs.co.uk for our bank details.

5. Payment via ParentPay

You should find a payment item assigned to your daughter on [ParentPay](#) entitled ‘CCHS Buildings Appeal’. Payment may be made via debit or credit card, and the amount can be edited to suit your wishes. Payments may be made as often as you like to suit your circumstances.

Help us do more for your daughters – success through community

6. Gift Aid

Should you choose to contribute via bank standing order or ParentPay, if you are a UK tax payer we can benefit further if you complete a Gift Aid Declaration form. This means that we can reclaim from HMRC any income tax you have paid on your donations to us, at a basic tax rate of 20%. The form can be accessed [here](#).

Leaving a Legacy Please consider leaving the School a legacy in your will. If you leave a gift to a charity such as CCHS, its value will be deducted from your estate (your money, possessions and property) before Inheritance Tax is calculated.

Thank you,in advance, for any support you can provide to the students of CCHS

