

# CCHS Laudatio

23rd January 2026



Founded 1907

A leading academic school community,  
inspired to excellence in education and opportunity for girls

## MESSAGE FROM MR LAWLOR

We held our Sixth Form Insights Evening yesterday. We started holding this event due to the hundreds of applications we receive from girls at other schools who wish to join the CCHS Sixth Form.

This evening is always an uplifting one for all concerned, with prospective new students and their families visiting the school to learn more about the exceptional opportunities offered in Years 12 & 13. For us as school staff, it is inspiring how ambitious these prospective new students are about moving to a high-performing girls' school. Indeed, our Sixth Form is always enriched with the arrival of these scholarly young women.

Last term, the recognition from the Great British Schools Guide about the quality of pastoral care at CCHS and from The Sunday Times Parent Power Guide about the quality of academic outcomes achieved by Years 11 and 13 students, are clear reminders about the strong and aspirant students at our school, the talented and hard-working staff, and the supportive and encouraging families.

A reminder as well that families can support our School through the CCHS Foundation: please follow the QR code below or see the information provided overleaf, and thank you, in advance.

**CCHS Inspires**  
A leading academic school community, inspired to excellence in education and opportunity for girls

**PASTORAL SUPPORT & EMPOWERMENT**

- Actively socially inclusive with our Future Stories Entrance Test and Leaders of Tomorrow Programme
- Outstanding tailored Pastoral provision, including a SEND Quiet Room, Pastoral Hub and strong links with external services
- Carnegie Centre of Excellence School Mental Health Gold Award
- Carers Trust & The Children's Society Young Carers Award
- The Great British Schools Guide named CCHS as one of England's most well-behaved and safest schools

**ACADEMIC STRENGTH & SUCCESS**

- Top 20 state school nationally, The Sunday Times Parent Power Guides 2026, 2025, 2024 and 2023
- The Prince's Teaching Institute Subject Marks, in recognition of outstanding teaching
- National Association for Able Children in Education Challenge Award
- CCHS Institute, providing academic lectures & seminars and essay competitions
- CCHS Aspire, supporting our able students with applications to Cambridge, Oxford and other Russell Group universities

**ENRICHMENT OPPORTUNITY & ADVENTURE**

- House Community, building friendships across year groups and bringing joyful competition
- Enrichment Days across the academic year for all key stages
- A host of lunchtime clubs & societies for all year groups
- Our Sixth Form Electives Programme, designed to complement academic study with creativity, wellbeing and real-world insight
- Educational Trips, across all key stages, including a Sixth Form expedition with Operation Wallacea



# CCHS Values

## CITIZENSHIP

Inspire future citizens to think for themselves and to act for others. (Amplification of School Vision: 'Developing the leaders of tomorrow')



## DISTINCTION

Students will be provided with an outstanding education and we expect them to do their best in all endeavours. (Amplification of School Aim 1: 'The pursuit of excellence')



## CHALLENGE

Students will be stimulated to acquire new knowledge & understanding and motivated to develop new skills & attributes. (Amplification of School Aim 2: 'Fulfilling individual potential')



## DUTY

Students will conduct themselves with civility and compassion at all times, supporting each other and looking beyond themselves. (Amplification of School Aim 3: 'Contributing to the community')

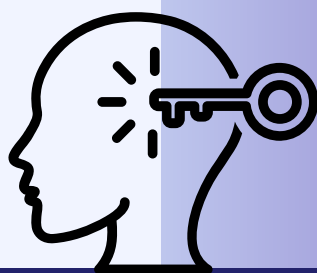
## IMAGINATION

Enable students to explore new ideas and empathise with the thinking of others, without limitation or risk. (English, Sport and Arts subjects)



## ENLIGHTENMENT

Equip students with the insight and determination to embrace new ideas, technology and innovation, enabling them to contribute to the ever-changing natural and physical world around them. (Mathematics, Computer Science and Natural Sciences subjects)



## DIVERSITY

Provide students with the tools to respect and celebrate the great diversity of cultures, backgrounds and beliefs, within and beyond the School, whilst recognising that we have more in common than that which divides us. (Humanities, Languages and Social Sciences subjects)





# Desiderata

## GO PLACIDLY amid the noise

and the haste, and remember what peace there may be in silence. As far as possible, without surrender, be on good terms with all persons. Speak your truth quietly and clearly; and listen to others, even to the dull and the ignorant; they too have their story.

Avoid loud and aggressive persons; they are vexatious to the spirit. If you compare yourself with others, you may become vain or bitter, for always there will be greater and lesser persons than yourself.

Enjoy your achievements as well as your plans. Keep interested in your own career, however humble; it is a real possession in the changing fortunes of time.

Exercise caution in your business affairs, for the world is full of trickery. But let this not blind you to what virtue there is; many persons strive for high ideals, and everywhere life is full of heroism. Be yourself. Especially do not feign affection. Neither be cynical about love; for in the face of all aridity and disenchantment, it is as perennial as the grass.

Take kindly the counsel of the years, gracefully surrendering the things of youth. Nurture strength of spirit to shield you in sudden misfortune. But do not distress yourself with dark imaginings. Many fears are born of fatigue and loneliness.

Beyond a wholesome discipline, be gentle with yourself. You are a child of the universe no less than the trees and the stars; you have a right to be here.

And whether or not it is clear to you, no doubt the universe is unfolding as it should. Therefore be at peace with God, whatever you conceive Him to be. And whatever your labors and aspirations, in the noisy confusion of life, keep peace in your soul. With all its sham, drudgery and broken dreams, it is still a beautiful world. Be cheerful. Strive to be happy.

by Max Ehrmann ©1927





# Student Achievements

Have you got some news to share?  
If so, please email Mrs Gross ([jgross@cchs.co.uk](mailto:jgross@cchs.co.uk)) and attach a photo or logo, if applicable.

## Gold Industrial Cadets Team- Residential University Workshop at Cambridge

Last week, we (Aashrita, Hannah, Holly, Elissa, Abigail, Ezi) visited the University of Cambridge to work on our Gold Industrial Cadets project at the Dyson Centre for Engineering Design. The visit provided valuable hands-on experience using professional engineering workshop facilities. We manufactured structural components by cutting, bending, drilling, and riveting metal to construct the rear section of our project. In addition, we used CAD modelling software such as Onshape to design the component layout and a laser cutter to accurately manufacture acrylic sheets to specification. We assembled the electrical systems by soldering electronic components to the tracks and applying heat-shrink insulation to ensure secure and reliable connections. This led to significant progress towards the final product: a medic robot.

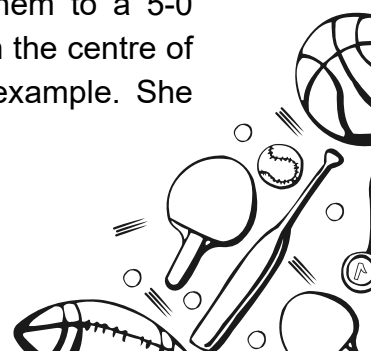
Throughout the visit, we developed practical construction skills and gained insight from the expert technicians, which improved our understanding of professional engineering processes. Working collaboratively encouraged us to communicate clearly, allocate tasks effectively, and overcome challenges as a team. This experience allowed us to reflect on the importance of teamwork and problem-solving in real-world engineering environments.



### Nyara, 7G, Athlete of the Week

For her exceptional defensive efforts as part of the school football team, helping to lead them to a 5-0 victory. She quickly adapted to playing in the centre of the pitch and leading the defence by example. She ensured the team kept the clean sheet.

Well done, Nyara!





# POLICY REMINDER

In line with the NHS guidance, it is mandatory that any student experiencing diarrhoea and/or vomiting symptoms remains away from the school setting until they have been symptom-free for 48 hours (the *48-hour rule*) and are feeling well.

This policy helps reduce the spread of contagious illnesses such as stomach bugs (norovirus or rotavirus), which can spread quickly in classrooms.



[Click here for NHS information on this topic](#)

MusicMozart Offenbach



**BRENTWOOD**  
CATHEDRAL



**AMY 11G**

**KATHERINE 11G**

**KATHY UNDERHILL**

**Lunchtime Recital**

**Violin - Soprano - Piano**

**Saturday 24th Jan 2026**

**1.30pm**

**Brentwood Cathedral**

**Ingrave Road**

**Brentwood**

**CM15 8AT**

[www.BrentwoodCathedralConcerts.org](http://www.BrentwoodCathedralConcerts.org)

music selections from

Mozart, Offenbach, Debussy, Bach and others

BRENTWOOD  
CATHEDRAL  
MUSIC  
PRESENTS  
**MUSIC@ONE**

**RECITALS**

**FREE  
ADMISSION  
RETIRING  
COLLECTION**

**CONTACT US**

Tel

01277 265288

Email

[music@brcdt.org](mailto:music@brcdt.org)





# Artist *of the week*



ARTIST OF THE WEEK- Emily, in Year 10, for this amazing costume transcription based on artist, Imogen Sophia. Well done!





# LOST PROPERTY AMNESTY

Tuesday 3rd February

From 12.35pm-1.15pm - V10

**IF YOU HAVE LOST ANY WATER BOTTLES, PE BAGS, COATS OR  
ANY OTHER ITEMS, PLEASE COME AND TAKE A LOOK (ANY  
ITEMS LEFT WILL BE DISPOSED OF)**

THANK YOU





CCHS PARENTS' ASSOCIATION



# HOUSE CLOTHING COMPETITION!

30th January, 8-8.45am, CCHS Dining Area  
.....

Turn unwanted clothes into cash for the school and help your house win! The house with the most full bags of clothes collected takes the crown - so start saving now!

**Bags will be delivered to tutor groups ready for you to bring in on 30<sup>th</sup> January. Extra bags are also available from the front office, but you can also use any plastic bags.**



## Accepted Items:

- Adult and children's clothing
- Paired shoes
- Fashion accessories
- Handbags
- Belts
- Hats and scarves
- Jewellery, perfumes
- Unwanted Xmas Gifts

## X Please Don't Bring...

We don't accept dirty, damaged or wet clothes, toys, books, DVDs, duvets, pillows, uniforms or underclothing, linen, carpets, blankets, curtains, or bric-a-brac.

## THANK YOU X



# Arrival at and departure from school

We continue to engage with local residents (First Avenue, Corporation Road, Swiss Avenue, Westfield Avenue and Elms Drive) concerning their experiences during student arrival and departure periods.

Further to my communications on this matter previously, I note below key points of information to support CCHS families:

- Chelmsford City Council provided the following about the use of Rectory Lane car park:

*“Please be advised there is a standard five-minute grace period on all vehicles to allow the purchase of a pay and display ticket. Therefore, any vehicles that are in the car park for the purposes of dropping off and / or picking up should fall within that grace period.”*

- As a result of the concerns raised by local residents regarding instances of inconsiderate and at times dangerous parking, South Essex Parking Partnership noted that their Parking Enforcement Team will be stepping up their patrols in the area.
- Our School Eco Committee is undertaking work, supported by the local authority, to explore how students travel to and from school, and how we could support both school families and the wider community with matters of travel, parking and congestion.
- Our Senior Leadership Team is working with local officials and local politicians on the matter of parking and congestion, and we have made suggestions to support this work, including the idea of creating a new entrance/exit point to the school site on the Chelmer Valley Road (east side of the campus).

Thank you, as ever, for your support in ensuring that we are mindful of local residents, as we work to keep people safe and relations cordial.

.....

Please be aware of your surroundings when dropping off and picking up students to and from school. The area directly outside our school, in Broomfield Road, is a very busy thoroughfare. A vehicle which is not parked safely can be dangerous for other vehicles, as can dropping off/picking up students in the buslane.



# ROAD SAFETY



FRIDAY 30TH JAN  
12:30PM - IN THE HALL

# BUBBLE TEA SALE

 **White Peach Iced Fruit Tea**

**With Mango Pops**

 **Mango Iced Fruit Tea**

**With Lychee Pops**

 **Watermelon Iced Fruit Tea**

**With Coconut Jelly**

 **Brown Sugar Boba Milk Tea**

**With Tapioca**

**£5**

MADE BY 'BOBA FRESH' CHELMSFORD. CASH OR CARD ACCEPTED.

SO EVERYONE GETS A CHANCE, IT'S ONE BUBBLE TEA PER PERSON TO START WITH. AFTER EVERYONE'S BEEN SERVED, FEEL FREE TO POP BACK AND SEE IF THERE ARE ANY EXTRAS AVAILABLE!



# BARRACUDAS

ACTIVITY DAY CAMPS

AVAILABLE AT YOUR SCHOOL **2026!**  
**EXCLUSIVE PARENT DISCOUNT**

**GET AN EXTRA £25 OFF A WEEK**

OR...

**£5 OFF A DAY WITH CODE HSCP26**

Early Booking Offer!  
LOWEST prices guaranteed  
till 31st Jan!  
Save up to £125 with our  
EBO and your code!

HIGHLY RATED  
School Holiday  
camps!!!



SCAN ME!

- ⦿ 4 to 14 year olds!
- ⦿ 80+ Activities!
- ⦿ Choice each session!
- ⦿ Specialist Courses!
- ⦿ Flexible bookings!

\*Not to be used in conjunction with other offers.



**barracudas.co.uk**  
**01480 467 567**



# ANIMAL FARM

**BY GEORGE ORWELL**  
**ADAPTED BY TATTY HENNESSEY**

*TICKETS AVAILABLE  
ON PARENT PAY  
NOW!*



**THURSDAY 29<sup>TH</sup> AND FRIDAY 30<sup>TH</sup> JANUARY 2026**

**DOORS OPEN AT 6.30PM    PERFORMANCES AT 7PM**





# GOT A GIFT YOU WON'T USE?

✧ ✧ WE'D LOVE IT! ✧ ✧

**Please bring any unwanted gifts to the CCHS Dining Area during the House Clothing Competition on:**

**FRIDAY 30TH JANUARY, 8-8.45AM**

.....



**If you are unable to make it that morning, donations can also be left at Reception at any time during school hours. All donated items will help support future fundraising events at the school.**

**We would also be very grateful for any items suitable for raffle prizes for our upcoming Quiz Night.**

**THANK YOU X**

# CCHS News this week...

## OXFORD & CAMBRIDGE ONLINE INFORMATION EVENING

Posted: 19th January 2026

We are looking forward to our annual Oxford & Cambridge Information Evening, taking place this evening, and are delighted to welcome students from local schools to join us. We extend our sincere thanks to Dr Sam Lucy, former Director of Admissions for the Cambridge Colleges (2016-2023) and current Admissions Tutor at Newnham College, Cambridge, for her expert advice and guidance.

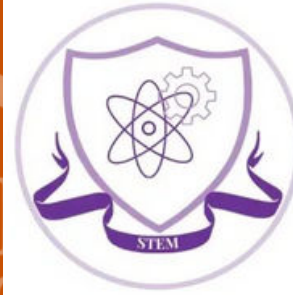


## BRITISH MATHS OLYMPIAD

Posted: 21st January 2026

All the best to our students who are participating in the second round of the British Mathematical Olympiad competition today.

STEM & STEAM - Chelmsford County High School for Girls



## SENIOR PHYSICS CHALLENGE

Posted: 20th January 2026

Good luck to our Year 12 students who are participating in the Senior Physics Challenge today.

BPhO

STEM & STEAM - Chelmsford County High School for Girls



## PREFECT TRAINING

Posted: 21st January 2026

Prefect training for our new Senior Prefects and House, Sports, Dance and Global Citizenship officials is taking place at the Old Chelmsfordians today.



## ARTS ENTERPRISE WORKSHOP WITH 'CULTURE CHELMSFORD'

Posted: 22nd January 2026

'Culture Chelmsford' are delivering an Arts Enterprise Workshop to our students today.



## SIXTH FORM INSIGHTS EVENING

Posted: 22nd January 2026

We are looking forward to welcoming prospective students, and their families, to our Sixth Form Insights Evening this evening. If you are interested in joining the CCHS Sixth Form (September 2026 start), please do visit our website.

Sixth Form Admissions | Chelmsford County High School for Girls

Sixth Form Prospectus





## Our Commitment to Girls' Education

We are proud to be a **founding member of the UK division of the International Coalition of Girls' Schools (ICGS)** – a global organisation dedicated to empowering girls through education and sharing research-based best practices.

The ICGS conducts extensive research into the benefits of an all-girls education, including improved academic outcomes, confidence, and leadership opportunities. These insights help us shape the very best learning environment for your daughter.

### Why should parents engage with this research?

By exploring these studies, you can:

- ✓ Understand the proven advantages of an all-girls education.
- ✓ Gain practical strategies to support your daughter's learning journey.
- ✓ Stay informed about global trends and innovations in girls' education.

We regularly update our website with the latest research findings and will continue to share details when new studies are released.

👉 **Discover more here:** <https://www.cchs.co.uk/about-us/girls-education-research/>

Together, we can ensure every student thrives and becomes a leader of tomorrow.

## This week in PSHE

YEAR GROUP	MONDAY 26 <sup>th</sup> JANUARY				PERIOD	4
	A	C	F	G	H	S
7	Puberty talk with Ms. Buckley			Puberty introduction		
8	Fire officer	Disability discrimination				
9	Recognising risks in sharing intimate images.					Self defense
10	Setting boundaries in relationships					
11	Sixth form fayre					
12	Model United Nations					
13	Sixth form fayre – running stalls					



Elevate Education's Spring Term

# Parent Webinar Series

Elevate Education delivers high-impact workshops to our students that help to develop their study skills, motivation, and exam preparation. Over the next term, you're invited to join their parent webinar series, where you can help support your child at home by reinforcing the skills they're learning at school.

## ***How You Can Make Technology an Ally (& Not the Enemy!)***

27th January 6:00pm (GMT)

## ***How You Can Help Improve Your Child's Memory***

10th February 6:00pm (GMT)

## ***How You Can Help Your Child Prepare for Exams***

3rd March 6:00pm (GMT)

## ***How You Can Support Your Child During Exams***

17th March 6:00pm (GMT)

Register today at: <https://go.elevateeducation.com/ukschoolwebinar>





**CCHS Parents'  
Association Presents...**

# Quiz Night



**FRIDAY 6<sup>TH</sup> FEB**

**at CCHS Main Hall.  
Doors Open at 6:15pm**

**(PROMPT START AT 7PM WITH A  
SCHEDULED FINISH TIME OF 10PM)**

**ALL PARENTS, TEACHERS,  
STUDENTS & FRIENDS WELCOME.**

Tickets £10 each via Parent Pay

**HOT PRE-ORDERED FOOD WILL BE AVAILABLE,  
PLUS WINE, BEER, SOFT DRINKS AND OTHER  
REFRESHMENTS. THERE WILL ALSO BE A RAFFLE DRAW.**

**Contact us**

by email at [PA@cchs.co.uk](mailto:PA@cchs.co.uk) if you wish to be  
put together as a team of up to 10 people.

# QUIZ NIGHT

Pre-order Pizza Menu. Pre-order via Parent  
Pay and email your team's choices to  
[PA@CCHS.co.uk](mailto:PA@CCHS.co.uk)



## **CHEESE & TOMATO £12**

LARGE SIZE

Tomato Sauce & Mozzarella. Suitable for Vegetarians.

## **PEPPERONI £12**

LARGE SIZE

Pepperoni, Tomato Sauce & Mozzarella.

## **VEGAN CHEESE & TOMATO £12**

LARGE SIZE



Vegan Dough, Vegan Cheese & Tomato Sauce.

## **GLUTEN FREE PEPPERONI £8**

SMALL SIZE



Gluten Free Pizza Base, Tomato Sauce, Mozzarella & Pepperoni.

## **GLUTEN FREE CHEESE & TOMATO £8**

SMALL SIZE



Gluten Free Pizza Base, Tomato Sauce & Mozzarella



## **WINE, BEER & SOFT DRINKS**



Plus a range of other snacks are available on the night.

**PIZZAS SUPPLIED BY:  
DOMINO'S PIZZA**





# CCHS PA PRE-LOVED UNIFORM SALE

**FEBRUARY 2026**

Please email the completed form to  
[cchssecondhanduniform@yahoo.com](mailto:cchssecondhanduniform@yahoo.com)  
by Sunday 22nd February

---

As you know, CCHS PA hold regular pre-loved uniform sales online. Last year, we filled around 100 orders and made around **£3,000** for the PA.

We are delighted to have saved £100s for those that have bought from us and reduced the amount of used clothing going to landfill.

- For sizing, please refer to our supplier's website [www.monkhouse.com](http://www.monkhouse.com)
  - We process orders on a first come first served basis. Please understand that we may not have all items that you request as we are dependent on the donations we receive.
  - We will always send you the best quality clothing that we have available, but please keep in mind that this is pre-loved uniform and the condition of items can vary.
  - Please note that PE tops and sweatshirts often have names embroidered on them. You can either unpick and re-embroider your daughter's name or use a sew-on or iron-on label over the top of the old name.
  - Once we check our stock against your requested items, we will email you to confirm the total price to pay and ask you to pay online to the PA account.
  - Once payment is received, the orders will be packaged and delivered to the school. We will contact you to confirm collection arrangements.
  - Returns cannot be accepted.
-



If you need name labels for uniform, bags, drinks bottles, etc please use Stikins - the PA get commission on your purchase and you don't need to do any sewing as the label simply sticks in!



## REDUCE REUSE RECYCLE

As your daughter outgrows their uniform, please donate it for sale by the PA

Only clean, good quality items please – no stains, marks or rips

**Please place all donations in the green wheelie bins provided**



Help us do more for your daughters – success through community



## Success through Community

We are launching the CCHS Foundation<sup>1</sup> as a school community enterprise dedicated to raising funds, through voluntary contributions each year, to provide your daughters with more:

- more resources, including books, journals and websites
- more facilities, including
- ICT infrastructure and digital learning devices
- and more opportunities, including
- enrichment activities and educational visits

### **How to contribute financially towards the CCHS Foundation:**

#### 1. Set up a Regular payment by Standing Order with your Bank

This provides the Foundation with a regular income to allow us to plan ahead more effectively, and can be set to a payment amount, frequency and date to suit you. Please contact the school at [finance@cchs.co.uk](mailto:finance@cchs.co.uk) for our bank details.

#### 2. Payment via ParentPay

You should find a payment item assigned to your daughter on [ParentPay](#) entitled 'Donate to CCHS Foundation'. Payment may be made via debit or credit card, and the amount can be edited to suit your wishes. Payments may be made as often as you like to suit your circumstances.

Additional payment items may be available at various times, 'giving days', for donating towards a specific fundraising goal.

#### 3. Gift Aid

However you choose to contribute, if you are a UK tax payer, we can benefit further if you complete a Gift Aid Declaration form. This means that we can reclaim from HMRC any income tax you have paid on your donations to us, at a basic tax rate of 20%. The form can be accessed [here](#).

---

<sup>1</sup> The CCHS Foundation is not a distinct legal entity but a term we are using for this initiative under CCHS's exempt charitable status as an academy.



## **Ways to donate towards CCHS Capital projects:**

### **1. TotalGiving**

The School has set up an online fundraising page via [TotalGiving](#). This allows you to make regular or single contributions online using a credit or debit card. Gift Aid for eligible donations can also be processed through this route.

### **2. Giving through an employer scheme:**

#### **Payroll Giving**

Payroll Giving (also known as ‘Give As You Earn’) is a valuable, long term source of revenue, providing regular income to help charities budget and plan more effectively. Your donation can often be made from your pre-tax income. Please ask your employer about this scheme.

As an academy, the School is considered to be an exempt charity and as such does not need to register with the Charity Commission. However, our charitable status is registered with HMRC. ‘Chelmsford County High School for Girls’ should be used as the reference on the payroll giving paperwork.

#### **Company Gifts & Matched Funding**

Some companies operate schemes allowing employees to nominate a charity for a company donation. This is often under a ‘matched funding’ programme whereby a company will match the donation made by the employee to their chosen charity. Please ask your employer about this scheme.

### **3. CAF Giving – more details**

The Charities Aid Foundation (CAF) makes giving to charity easy. Through CAF, the value of your donation is increased via tax relief, and you have the option to donate anonymously.

### **4. Set up a regular payment by Standing Order with your Bank**

This provides the School with a regular income to allow us to plan more effectively, and can be set to a payment amount, frequency and date to suit you. Please contact the school at [finance@cchs.co.uk](mailto:finance@cchs.co.uk) for our bank details.

### **5. Payment via ParentPay**

You should find a payment item assigned to your daughter on [ParentPay](#) entitled ‘CCHS Buildings Appeal’. Payment may be made via debit or credit card, and the amount can be edited to suit your wishes. Payments may be made as often as you like to suit your circumstances.

Help us do more for your daughters – success through community

6. Gift Aid

Should you choose to contribute via bank standing order or ParentPay, if you are a UK tax payer we can benefit further if you complete a Gift Aid Declaration form. This means that we can reclaim from HMRC any income tax you have paid on your donations to us, at a basic tax rate of 20%. The form can be accessed [here](#).

**Leaving a Legacy** Please consider leaving the School a legacy in your will. If you leave a gift to a charity such as CCHS, its value will be deducted from your estate (your money, possessions and property) before Inheritance Tax is calculated.

Thank you, in advance, for any support you can provide to the students of CCHS

