



Inspiring the leaders of tomorrow to think for themselves and act for others

MESSAGE FROM MR LAWLOR

Many congratulations to all the students who were involved in last week's 'Euphoria' Dance Show performances, which were a triumph! A big thank you to the brilliant Dance Officials; Daisy, Ishita, Felita, Chelsea and Melisa, whose vision, organisation and hard work inspired students to excel.

As always, thank you to CCHS staff and families, who supported the Dance Show with publicity, ticketing, light & sound and stage management, ensuring each performance was 'sold out', resulting in a wonderfully joyous atmosphere during each show. A particular thank you to the wonderful CCHS Parents' Association for their support and fundraising across the Dance Shows.



Please use the QR code for details on how to donate to the CCHS Foundation.
Thank you for your support.

Or visit www.cchs.co.uk/about-us/cchs-foundation

Help us do more for your daughters – success through community



Success through Community

The CCHS Foundation¹ is a school community enterprise dedicated to raising funds, through voluntary contributions each year, to provide your daughters with more:

- more resources, including books, journals and websites
- more facilities, including
- ICT infrastructure and digital learning devices
- and more opportunities, including
- enrichment activities and educational visits

How to contribute financially towards the CCHS Foundation:

1. Set up a Regular payment by Standing Order with your Bank

This provides the Foundation with a regular income to allow us to plan ahead more effectively, and can be set to a payment amount, frequency and date to suit you. Please contact the school at finance@cchs.co.uk for our bank details.

2. Payment via ParentPay

You should find a payment item assigned to your daughter on [ParentPay](#) entitled 'Donate to CCHS Foundation'. Payment may be made via debit or credit card, and the amount can be edited to suit your wishes. Payments may be made as often as you like to suit your circumstances.

Additional payment items may be available at various times, 'giving days', for donating towards a specific fundraising goal.

3. Gift Aid

However you choose to contribute, if you are a UK tax payer, we can benefit further if you complete a Gift Aid Declaration form. This means that we can reclaim from HMRC any income tax you have paid on your donations to us, at a basic tax rate of 20%. The form can be accessed [here](#).

¹ The CCHS Foundation is not a distinct legal entity but a term we are using for this initiative under CCHS's exempt charitable status as an academy.

Ways to donate towards CCHS Capital projects:

1. TotalGiving

The School has set up an online fundraising page via [TotalGiving](#). This allows you to make regular or single contributions online using a credit or debit card. Gift Aid for eligible donations can also be processed through this route.

2. Giving through an employer scheme:

Payroll Giving

Payroll Giving (also known as ‘Give As You Earn’) is a valuable, long term source of revenue, providing regular income to help charities budget and plan more effectively. Your donation can often be made from your pre-tax income. Please ask your employer about this scheme.

As an academy, the School is considered to be an exempt charity and as such does not need to register with the Charity Commission. However, our charitable status is registered with HMRC. ‘Chelmsford County High School for Girls’ should be used as the reference on the payroll giving paperwork.

Company Gifts & Matched Funding

Some companies operate schemes allowing employees to nominate a charity for a company donation. This is often under a ‘matched funding’ programme whereby a company will match the donation made by the employee to their chosen charity. Please ask your employer about this scheme.

4. CAF Giving – more details

The Charities Aid Foundation (CAF) makes giving to charity easy. Through CAF, the value of your donation is increased via tax relief, and you have the option to donate anonymously.

5. Set up a regular payment by Standing Order with your Bank

This provides the School with a regular income to allow us to plan more effectively, and can be set to a payment amount, frequency and date to suit you. Please contact the school at finance@cchs.co.uk for our bank details.

6. Payment via ParentPay

You should find a payment item assigned to your daughter on [ParentPay](#) entitled ‘CCHS Buildings Appeal’. Payment may be made via debit or credit card, and the amount can be edited to suit your wishes. Payments may be made as often as you like to suit your circumstances.

Help us do more for your daughters – success through community

7. Gift Aid

Should you choose to contribute via bank standing order or ParentPay, if you are a UK tax payer we can benefit further if you complete a Gift Aid Declaration form. This means that we can reclaim from HMRC any income tax you have paid on your donations to us, at a basic tax rate of 20%. The form can be accessed [here](#).

Leaving a Legacy Please consider leaving the School a legacy in your will. If you leave a gift to a charity such as CCHS, its value will be deducted from your estate (your money, possessions and property) before Inheritance Tax is calculated.

Thank you, in advance, for any support you can provide to the students of CCHS



CCHS Values

CITIZENSHIP

Inspire future citizens to think for themselves and to act for others. (Amplification of School Vision: 'Developing the leaders of tomorrow')



DISTINCTION

Students will be provided with an outstanding education and we expect them to do their best in all endeavours. (Amplification of School Aim 1: 'The pursuit of excellence')



CHALLENGE

Students will be stimulated to acquire new knowledge & understanding and motivated to develop new skills & attributes. (Amplification of School Aim 2: 'Fulfilling individual potential')



DUTY

Students will conduct themselves with civility and compassion at all times, supporting each other and looking beyond themselves. (Amplification of School Aim 3: 'Contributing to the community')

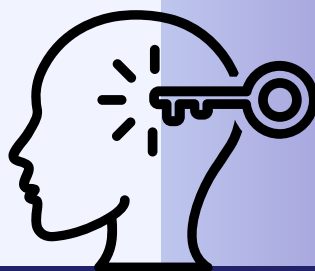
IMAGINATION

Enable students to explore new ideas and empathise with the thinking of others, without limitation or risk. (English, Sport and Arts subjects)



ENLIGHTENMENT

Equip students with the insight and determination to embrace new ideas, technology and innovation, enabling them to contribute to the ever-changing natural and physical world around them. (Mathematics, Computer Science and Natural Sciences subjects)



DIVERSITY

Provide students with the tools to respect and celebrate the great diversity of cultures, backgrounds and beliefs, within and beyond the School, whilst recognising that we have more in common than that which divides us. (Humanities, Languages and Social Sciences subjects)



Desiderata

GO PLACIDLY amid the noise

and the haste, and remember what peace there may be in silence. As far as possible, without surrender, be on good terms with all persons. Speak your truth quietly and clearly; and listen to others, even to the dull and the ignorant; they too have their story.

Avoid loud and aggressive persons; they are vexatious to the spirit. If you compare yourself with others, you may become vain or bitter, for always there will be greater and lesser persons than yourself.

Enjoy your achievements as well as your plans. Keep interested in your own career, however humble; it is a real possession in the changing fortunes of time.

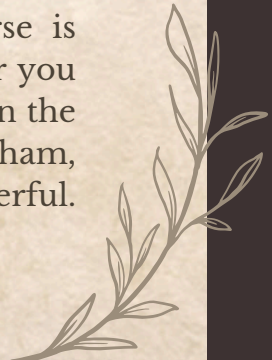
Exercise caution in your business affairs, for the world is full of trickery. But let this not blind you to what virtue there is; many persons strive for high ideals, and everywhere life is full of heroism. Be yourself. Especially do not feign affection. Neither be cynical about love; for in the face of all aridity and disenchantment, it is as perennial as the grass.

Take kindly the counsel of the years, gracefully surrendering the things of youth. Nurture strength of spirit to shield you in sudden misfortune. But do not distress yourself with dark imaginings. Many fears are born of fatigue and loneliness.

Beyond a wholesome discipline, be gentle with yourself. You are a child of the universe no less than the trees and the stars; you have a right to be here.

And whether or not it is clear to you, no doubt the universe is unfolding as it should. Therefore be at peace with God, whatever you conceive Him to be. And whatever your labors and aspirations, in the noisy confusion of life, keep peace in your soul. With all its sham, drudgery and broken dreams, it is still a beautiful world. Be cheerful. Strive to be happy.

by Max Ehrmann ©1927



Instrumental & Vocal lessons opportunity from January 2026

We have over 250 students who take instrumental and/or vocal lessons with one of highly experienced specialist teachers here in school. We currently have limited availability for the following instruments from January to July 2026. You would need to arrange your own instrument which can be easily hired from Essex Music Service on a termly basis for a small fee or other hirers of your choosing.

If you would like your daughter to take up this opportunity, then please email me at clamberti@cchs.co.uk for more information including the cost of lessons for the remainder of the academic year.

Space available:

2x Voice
 1x Drum Kit
 1x Piano
 2x Oboe
 1x Bassoon
 2x Trumpet, French Horn or Trombone
 1x Guitar (classical or electric) or Bass Guitar



Mr C. Lamberti
 Director of Music

This week in PSHE

YEAR GROUP	TUESDAY 9 TH DECEMBER				PERIOD	3
	A	C	F	G	H	S
7	Healthy relationships		Self esteem	Fire officer	Self esteem	
8	Extremism and Hate crime					
9	Deets and Squares					Self-defence.
10	Jack Petchey review with Mr Carter and form tutors.					
11	Extremism	Influencing speech		Extremism		Influencing speech
12	Sex education – readiness and options					
13	Revision Skills with Mr Selby and form tutors.					



Congratulations to Vaishnavi who has been awarded the IHEEM Innovation in Wellbeing & Healthcare Engineering Award at The Big Bang Competition 2025 for her outstanding project, Health Hub. As part of this prestigious award, Vaishnavi received a £500 prize and a £5,000 bursary.



Following this success, IHEEM reached out to feature Vaishnavi in the Health Estate Journal, a leading publication distributed to thousands of healthcare professionals. This upcoming feature will highlight her competition experience and the innovative work behind Health Hub.



In addition, Vaishnavi was invited to speak at the Healthcare Estates Conference and Exhibition in Manchester this October. Vaishnavi joined the Keynote Session of Europe's largest healthcare innovation conference, sharing insights and proudly representing young people in STEM on a major stage.

Christmas Grand Draw !

HAVE YOU GOT YOUR TICKETS?

1st prize	£200 Cash
2nd prize	£100 Amazon Voucher
3rd prize	£50 Odeon Voucher
4th prize	£30 Pizza Moto Voucher Afternoon Tea for two at County Hotel
5th prize	5 Class Pass at HotPod Yoga Family
6th prize	Photography Voucher by Barrett & Coe
7th prize	£50 Mutlows Driving Lesson
8th prize	Voucher Charlie King Sports
9th prize	Massage Session Japanese Head
10th prize	Spa Voucher Christmas Hamper
11th prize	Tea-Time Hamper Hobbycraft Craft
12th prize	Box Prosecco, Chocolates &
13th prize	Candle
14th prize	4x £5 Bubble Tea Vouchers
15th prize	



Tickets £1 Each

**Minimum purchase of £3 via Parent Pay.
Winners will be drawn on Friday 12th Dec.
Tickets available to those aged 16 and over.**

Arrival at and departure from school

We continue to engage with local residents (First Avenue, Corporation Road, Swiss Avenue, Westfield Avenue and Elms Drive) concerning their experiences during student arrival and departure periods.

Further to my communications on this matter previously, I note below key points of information to support CCHS families:

- Chelmsford City Council provided the following about the use of Rectory Lane car park:

“Please be advised there is a standard five-minute grace period on all vehicles to allow the purchase of a pay and display ticket. Therefore, any vehicles that are in the car park for the purposes of dropping off and / or picking up should fall within that grace period.”

- As a result of the concerns raised by local residents regarding instances of inconsiderate and at times dangerous parking, South Essex Parking Partnership noted that their Parking Enforcement Team will be stepping up their patrols in the area.
- Our School Eco Committee is undertaking work, supported by the local authority, to explore how students travel to and from school, and how we could support both school families and the wider community with matters of travel, parking and congestion.
- Our Senior Leadership Team is working with local officials and local politicians on the matter of parking and congestion, and we have made suggestions to support this work, including the idea of creating a new entrance/exit point to the school site on the Chelmer Valley Road (east side of the campus).

Thank you, as ever, for your support in ensuring that we are mindful of local residents, as we work to keep people safe and relations cordial.

.....

Please be aware of your surroundings when dropping off and picking up students to and from school. The area directly outside our school, in Broomfield Road, is a very busy thoroughfare. A vehicle which is not parked safely can be dangerous for other vehicles, as can dropping off/picking up students in the buslane.



ROAD SAFETY

Artist *of the week*



ARTIST OF THE WEEK Fran, in Year 11, for her original character design. All made from scratch.

What a talent!

Early Edition of Institute of Physics Lecture at CCHS

Thursday 27th November

Thank you to everyone who joined us for the early edition lecture, “What Has the Earth’s Magnetic Field Ever Done for Us?”, presented by Dr. Gemma Richardson from the British Geological Survey last Thursday.

The event attended by our students, parents and guests from neighbouring schools, was a great success and sparked fascinating discussions about the importance of Earth’s magnetic field. Please find below a student reflection on the lecture.



On Thursday 27th November, we had the opportunity to attend a lecture by Dr. Gemma Richardson titled “What Has the Earth’s Magnetic Field Ever Done for Us?”.

It was an amazing chance to explore a very niche and unexpected side of physics and learn how it connects to everyday life—things we certainly wouldn’t have thought about before this lecture.

We started with the basics: how the Earth’s magnetic field is generated and the importance of monitoring it globally.

It is a well-known fact that we have the magnetic field to thank for the aurora borealis, but on a much smaller scale, we also rely on it for navigation in our phones. We would quite literally be lost without it.

We then moved on to discussing solar storms, making links to how astronomical events such as solar flares can have a broad impact on Earth, particularly on technology such as satellites and national power grid transformers.

It was also surprising to learn that space weather events are assessed as relatively high in both likelihood and impact on the UK National Risk Register (on the same scale as an infectious disease outbreak), again stressing the importance and relevance of geological monitoring.

At the end of the lecture, we engaged in a Q&A session with questions varying from “What does a typical day look like at the British Geological Survey?” to “What is the latest scientific theory on magnetic pole shifts?”.

All in all, it was an interesting lecture and a great opportunity to expand our scientific knowledge beyond the classroom.

By Hannah (12 KRE)



Keeping Well in the Winter



As we enter the winter period, respiratory and gastric viruses begin to thrive. Please practice good hygiene to help prevent these viruses from flourishing. Use the simple rules of “Catch It, Bin It, Kill It”, and remember to wash hands before eating, before and after food preparation, after using the toilet and after blowing your nose, coughing, or sneezing. Hand sanitizer can be used but remember, it does not kill norovirus – only washing with soap and water will.



CATCH IT

Germs spread easily. Always carry tissues and use them to catch your cough or sneeze.



BIN IT

Germs can live for several hours on tissues. Dispose of your tissue as soon as possible.



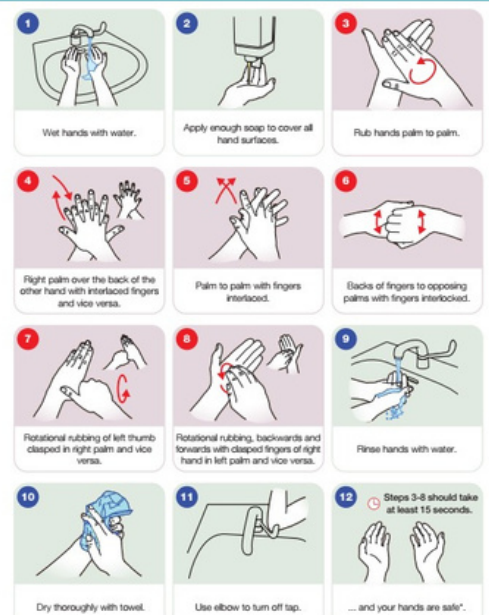
KILL IT

Hands can transfer germs to every surface you touch. Clean your hands as soon as you can.



Best Practice: How to hand wash step by step images

Steps 3-8 should take at least 15 seconds.



Adapted from the World Health Organization/Health Protection Scotland
© Crown copyright 2022

*Any skin complaints should be referred to local occupational health or GP.



BOOK DONATION

via

AMAZON WISHLIST

Thank you to those parents who have generously donated books to the library.

If you would still like to view our updated wish list please use the link below and send the book to the John Moore Library.

Thank you

[Click HERE](#)

HELP BRING NEW BOOKS TO THE CCHS STUDENTS



GRAMMATICUS

KEGS AND CCHS PA CHOIR



Christmas Concert

Raising funds for CCHS Parents Association.

SUNDAY 14TH DECEMBER AT 2:30PM
AT CCHS SCHOOL HALL

Tickets available in advance from
sraybould@hotmail.com or on the door.

£10 adults, £5 under 18s.

Music Director: Clive Smith

Accompanist: Tim Carey

*Includes a wide range of music from the choir,
plus solos from talented young instrumentalists.*



CCHS News this week...

HOUSE KARAOKE

Posted: 1st December 2025

We are looking forward to the House Karaoke competition taking place this week!

House System - Chelmsford County High School for Girls



ECONOMICS IN ACTION TRIP TO LONDON

Posted: 3rd December 2025

Our A-level Economics students are attending the Economics in Action event in London today. Through engaging discussions, interactive sessions, and real-world case studies, students will uncover the forces shaping our world - from microeconomics to global markets.

Economics - Chelmsford County High School for Girls



THE SUNDAY TIMES PARENT POWER GUIDE 2026

Posted: 5th December 2025

Earlier in the Autumn Term, the Great British Schools Guide published national research based on parent feedback via the Ofsted Parent View survey. Based on the percentage of parents who agreed or strongly agreed with the statement "the school makes sure its pupils are well behaved", CCHS is joint 3rd in England and 1st in the East of England. The Great British Schools Guide also listed "the safest state schools in England, as rated by parents" through the Ofsted Parent View survey; CCHS is 6th nationally and 2nd in the East of England.

Later in the Autumn Term, the Department for Education released GCSE attainment data for England. The success of CCHS students in the summer 2025 examinations places their achievements 15th in the country, across state and independent schools, from a total of 6,579 schools. And at the weekend, The Sunday Times Parent Power Guide 2026 will be published, in relation to 2025 GCSE and A-level results. The newspaper provides listings, both by region and nationally. In terms of the headlines for CCHS:

- 1st in East Anglia, state girls' schools
- 3rd in East Anglia, all state schools
- 6th nationally, state girls' schools
- 16th in the country overall (all state schools)

This marks the fourth consecutive year that the achievements of CCHS students has featured in the Top 20 state schools nationally.

The research and data provided by the Great British Schools Guide, the Department for Education and The Sunday Times Parent Power Guide demonstrate the significant interplay between pastoral strength and academic success. Thank you to CCHS staff for their outstanding work and commitment, to CCHS families for the support and encouragement of our work with your wonderful daughters, and many congratulations to CCHS students, who exemplify the power and importance of scholarly excellence.

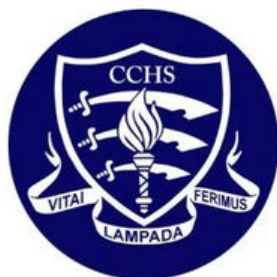


A-LEVEL POLITICS TRIP TO HOUSES OF PARLIAMENT

Posted: 5th December 2025

Our A-level Politics students are visiting the Houses of Parliament today to learn about democracy, governance, and the political system.

Politics - Chelmsford County High School for Girls



BAR MOCK TRIAL COMPETITION

Posted: 5th December 2025

Good luck to all our students who are participating in the Young Citizens' Bar Mock Trial Competition taking place tomorrow.

Mock Trials - Young Citizens





Elevate Education's Autumn Term

Parent Webinar Series

Elevate Education delivers high-impact workshops to our students that help to develop their study skills, motivation, and exam preparation. Over the next term, you're invited to join their parent webinar series, where you can help support your child at home by reinforcing the skills they're learning at school.

How to Help Your Child Alleviate Stress

16th December 6:00pm (GMT)

Register today at: <https://go.elevateeducation.com/ukschoolwebinar>

BARRACUDAS

ACTIVITY DAY CAMPS

AVAILABLE AT
YOUR SCHOOL **2026!**
EXCLUSIVE PARENT DISCOUNT

GET AN EXTRA £25 OFF A WEEK

OR...

£5 OFF A DAY WITH CODE HSCP26

*Not to be used in conjunction with other offers.

Early Booking Offer!
LOWEST prices guaranteed
till 31st Jan!
Save up to £125 with our
EBO and your code!

- ⦿ 4 to 14 year olds!
- ⦿ 80+ Activities!
- ⦿ Choice each session!
- ⦿ Specialist Courses!
- ⦿ Flexible bookings!

*Not to be used in conjunction with other offers.

 **barracudas.co.uk**
 **01480 467 567**

HIGHLY RATED
School Holiday
Camps!!!



Barracudas Activity Day Camps, the UK's favourite school holiday camp for children aged 4 to 14 years, will be open at our school in 2026. 80+ exciting activities including arts and crafts, sports, teambuilding and much more! We also have specialist activities including archery and motorsports offered at our Easter and summer camps.

Ofsted registered, confidence building camps with high staff to child ratios.

Save up to £125 with their Early Booking offer and your exclusive code!

Book now at www.Barracudas.co.uk or call 01480 467 567.

Parent discounts:

Parents can get £25 off a full week or £5 off a day by applying this code in the promotions box: HSCP26

*can't be used in conjunction with other codes (apart from our Early Booking Offer)