



Inspiring the leaders of tomorrow to think for themselves and act for others

MESSAGE FROM MR LAWLOR

Following our South Asian Heritage Month celebrations last term, we held our Culture Fest events and celebrations this week, which included a series of lunchtime performances, culminating in Black Excellence Fest yesterday and Cultural Dress Day today. Many thanks to all the students and staff who supported and engaged with this rich programme. Particular thanks to Mrs Watt, Mr French, Mr Rowell, Mr Cable, Mrs Cross, and our wonderful team of Change & Diversity Prefects.

My 'Headteacher Welcome' on our school website speaks to these very strengths that distinguish our school:

WELCOME TO GLOBAL CHELMSFORD

We are blessed to be a culturally diverse, linguistically rich and socially inclusive school community. Chelmsford County High School (CCHS) is a proud girls' school community. CCHS was formally opened on 1st May 1907, with 76 inspiring students on roll, to provide girls with an academic education. Now in 2025, there are 1,276 extraordinary girls and young women, representing cultures and traditions from the world over, who are part of our ambitious school community, committed to excellence in girls' education and empowerment.

Please do visit our change@cchs webpage for more information about the innovative work being undertaken by staff, students and families across the school community [Change@CCHS - Chelmsford County High School for Girls](#)



CCHS – VISION, AIMS & VALUES

We amplify and fortify our vision and aims to cultivate core values which direct and drive our work. These values form our educational covenant with our school community:

CITIZENSHIP

Inspire future citizens to think for themselves and to act for others.

(Amplification of School Vision: 'Developing the leaders of tomorrow')



DUTY

Students will conduct themselves with civility and compassion at all times, supporting each other and looking beyond themselves. (Amplification of School Aim 3: 'Contributing to the community')



DISTINCTION

Students will be provided with an outstanding education and we expect them to do their best in all endeavours. (Amplification of School Aim 1: 'The pursuit of excellence')



CHALLENGE

Students will be stimulated to acquire new knowledge & understanding and motivated to develop new skills & attributes. (Amplification of School Aim 2: 'Fulfilling individual potential')

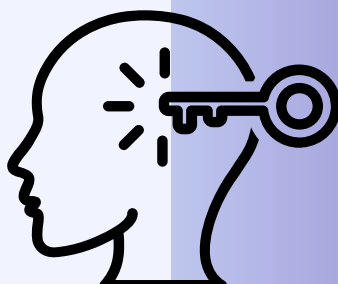
IMAGINATION

Enable students to explore new ideas and empathise with the thinking of others, without limitation or risk. (English, Sport and Arts subjects)



ENLIGHTENMENT

Equip students with the insight and determination to embrace new ideas, technology and innovation, enabling them to contribute to the ever-changing natural and physical world around them. (Mathematics, Computer Science and Natural Sciences subjects)



DIVERSITY

Provide students with the tools to respect and celebrate the great diversity of cultures, backgrounds and beliefs, within and beyond the School, whilst recognising that we have more in common than that which divides us. (Humanities, Languages and Social Sciences subjects)



Desiderata

GO PLACIDLY amid the noise

and the haste, and remember what peace there may be in silence. As far as possible, without surrender, be on good terms with all persons. Speak your truth quietly and clearly; and listen to others, even to the dull and the ignorant; they too have their story.

Avoid loud and aggressive persons; they are vexatious to the spirit. If you compare yourself with others, you may become vain or bitter, for always there will be greater and lesser persons than yourself.

Enjoy your achievements as well as your plans. Keep interested in your own career, however humble; it is a real possession in the changing fortunes of time.

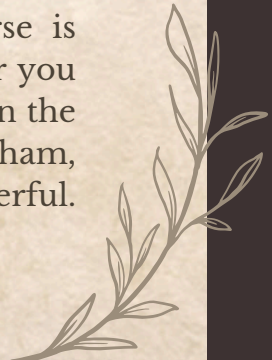
Exercise caution in your business affairs, for the world is full of trickery. But let this not blind you to what virtue there is; many persons strive for high ideals, and everywhere life is full of heroism. Be yourself. Especially do not feign affection. Neither be cynical about love; for in the face of all aridity and disenchantment, it is as perennial as the grass.

Take kindly the counsel of the years, gracefully surrendering the things of youth. Nurture strength of spirit to shield you in sudden misfortune. But do not distress yourself with dark imaginings. Many fears are born of fatigue and loneliness.

Beyond a wholesome discipline, be gentle with yourself. You are a child of the universe no less than the trees and the stars; you have a right to be here.

And whether or not it is clear to you, no doubt the universe is unfolding as it should. Therefore be at peace with God, whatever you conceive Him to be. And whatever your labors and aspirations, in the noisy confusion of life, keep peace in your soul. With all its sham, drudgery and broken dreams, it is still a beautiful world. Be cheerful. Strive to be happy.

by Max Ehrmann ©1927





Student Achievements

Have you got some news to share?
If so, please email Mrs Gross (jgross@cchs.co.uk) and attach a photo or logo, if applicable.

Amelia, (9), has been offered a place in the National Youth Orchestra of Great Britain (NYO) after two highly competitive rounds of auditions. This is a fantastic achievement, especially as she will be among the youngest members, with most of her peers typically aged 16-18.

Amelia's exciting journey with the NYO will begin with a national concert tour starting in January at the Barbican, culminating in a Summer concert at the Royal Albert Hall for the BBC Proms.

Congratulations, Amelia!



Harriet, (7C), has been selected for the Essex Netball Academy Player Development Programme, following a trial attended by girls across the county.

Harriet also plays for Flames Netball Club.

Congratulations, Harriet!



Artist of the week



ARTIST OF THE WEEK- Meera Year 12 for her fantastic research on Tomasz Mro. Well done.



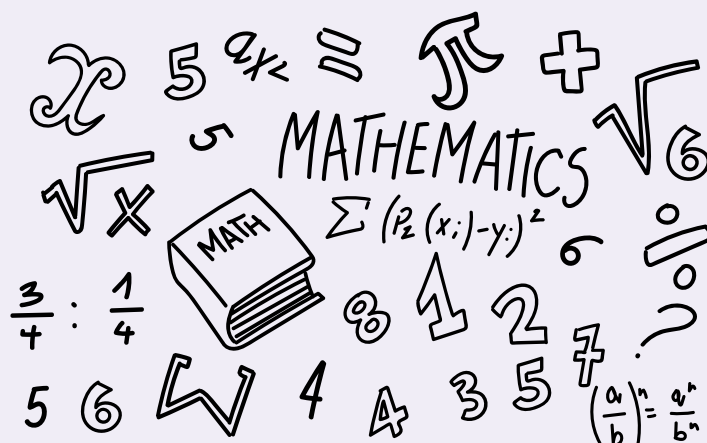
Mathematics News

Mathematics competition season is well underway, with seven of our students receiving their results in the Mathematical Olympiad for Girls (MOG) and Mathematical Competition for Girls (MCG). A further 63 students sat the Senior Maths Challenge this week, with results expected in the coming weeks.

Arthie, Tulasi and Elizabeth competed against 1400 other girls nationally in MOG and Arthie was successful in bagging a top score of 43/50, securing a place in this year's British Mathematical Olympiad. Tulasi and Elizabeth also performed very well, earning a distinction and merit respectively.

Well done to Josma, Izzy, Soyeon and Zoe, who competed against 8000 students in MCG, earning three distinctions and one merit. Josma achieved the top score. The three students in KS4 also performed impressively, as most competitors nationally were sixth formers.

Congratulations to all who took part!



Arrival at and departure from school

We continue to engage with local residents (First Avenue, Corporation Road, Swiss Avenue, Westfield Avenue and Elms Drive) concerning their experiences during student arrival and departure periods.

Further to my communications on this matter previously, I note below key points of information to support CCHS families:

- Chelmsford City Council provided the following about the use of Rectory Lane car park:

"Please be advised there is a standard five-minute grace period on all vehicles to allow the purchase of a pay and display ticket. Therefore, any vehicles that are in the car park for the purposes of dropping off and / or picking up should fall within that grace period."

- As a result of the concerns raised by local residents regarding instances of inconsiderate and at times dangerous parking, South Essex Parking Partnership noted that their Parking Enforcement Team will be stepping up their patrols in the area.
- Our School Eco Committee is undertaking work, supported by the local authority, to explore how students travel to and from school, and how we could support both school families and the wider community with matters of travel, parking and congestion.
- Our Senior Leadership Team is working with local officials and local politicians on the matter of parking and congestion, and we have made suggestions to support this work, including the idea of creating a new entrance/exit point to the school site on the Chelmer Valley Road (east side of the campus).

Thank you, as ever, for your support in ensuring that we are mindful of local residents, as we work to keep people safe and relations cordial.

.....

Please be aware of your surroundings when dropping off and picking up students to and from school. The area directly outside our school, in Broomfield Road, is a very busy thoroughfare. A vehicle which is not parked safely can be dangerous for other vehicles, as can dropping off/picking up students in the buslane.



ROAD SAFETY

CCHS News this week...

CCHS CULTURE FEST WEEK

Posted: 6th October 2025

We are looking forward to our Culture Fest week, starting today. Thank you, in advance, to staff, students and families for supporting this wonderful programme of activities and events.



WORLD MENTAL HEALTH DAY

Posted: 10th October 2025

The overall objective of World Mental Health Day, 10th October, is to raise awareness of mental health issues around the world and to mobilise efforts in support of mental health.

World Mental Health Day

Pastoral – Chelmsford County High School for Girls



BLACK EXCELLENCE FEST

Posted: 9th October 2025

We are looking forward to our Black Excellence Fest performances at lunchtime today. Thank you and congratulations to all our brilliant students who are participating in the event.



KS3 AUTUMN DISCO

Posted: 10th October 2025

Many thanks to the wonderful CCHS Parents' Association for arranging today's Autumn Disco for Years 7-9 students.

Parents' Association (The PA) – Chelmsford County High School for Girls



Reminder...

Help your daughter to be prepared for the school day by planning ahead the night before. This will help them to remember items such as; instruments, water bottles, homework, books, lunches...

If forgotten, please refrain from bringing them to school for delivery.

Thank you.

This week in PSHE

YEAR GROUP	FRIDAY 17 th OCTOBER				PERIOD	1
	A	C	F	G	H	S
7	Learner profile – ASE and JCR					
8	Fake News					
9	Enrichment trip to Ypres					
10	Run, Hide & Tell and then end of friendship lesson.					
11	Sexual violence	Extremism		Sexual violence	Extremism	
12	Cosmetic and plastic surgery					
13	Taking care of yourself when living independently (Part 2)					



Elevate Education's Autumn Term

Parent Webinar Series

Elevate Education delivers high-impact workshops to our students that help to develop their study skills, motivation, and exam preparation. Over the next term, you're invited to join their parent webinar series, where you can help support your child at home by reinforcing the skills they're learning at school.

How You Can Help Your Child Set Up for Success in Exams

14th October 6:00pm (BST)

How You Can Help Improve Your Child's Memory

18th November 6:00pm (GMT)

How You Can Build Resilience in Your Child

2nd December 6:00pm (GMT)

How to Help Your Child Alleviate Stress

16th December 6:00pm (GMT)

Register today at: <https://go.elevateeducation.com/ukschoolwebinar>

**Please be aware that
the School Uniform
Shop will be closed
on Wednesday 15th
and Friday 17th
October 2025
due to a lack of
available staff.**



CCHS PARENTS' ASSOCIATION

CCHS WINTER FAYRE

CRAFT STALLS
FOOD & DRINKS
GAMES - RAFFLE
LIVE MUSIC

11 a.m. - 2 p.m.

**Saturday 22nd November.
2025**

ADMISSION £1
STUDENTS FREE
CARD MACHINE AVAILABLE

CHELMSFORD COUNTY HIGH SCHOOL,
BROOMFIELD ROAD, CHELMSFORD



🎄 Winter Fayre – Call for Craft & Trade Stalls 🎄

Date: Saturday 22nd November 11am - 2pm

Location: Chelmsford County High School for Girls

We're excited to be holding our **Winter Fayre** and are inviting **established craftandtrade stallholders** to join us!

👉 Do you run a craftortrade business?

👉 Would you like to showcase yourwork and be part of our festive communityevent?

✨ This is a great opportunity to share yourcreativity, promote your business, and support our schoolcommunity.

Important:

- Stallholders **must be an existing business**
- **PublicLiability Insurance is required**

Howto apply:

If you'd like to book a stall or find outmore, please contact:

✉ pa@cchs.co.uk

We'd love to see your crafts, gifts, andfestive creations at our Winter Fayre!



Help us do more for your daughters – success through community



Success through Community

We are launching the CCHS Foundation¹ as a school community enterprise dedicated to raising funds, through voluntary contributions each year, to provide your daughters with more:

- more resources, including books, journals and websites
- more facilities, including
- ICT infrastructure and digital learning devices
- and more opportunities, including
- enrichment activities and educational visits

How to contribute financially towards the CCHS Foundation:

1. Set up a Regular payment by Standing Order with your Bank

This provides the Foundation with a regular income to allow us to plan ahead more effectively, and can be set to a payment amount, frequency and date to suit you. Please contact the school at finance@cchs.co.uk for our bank details.

2. Payment via ParentPay

You should find a payment item assigned to your daughter on [ParentPay](#) entitled 'Donate to CCHS Foundation'. Payment may be made via debit or credit card, and the amount can be edited to suit your wishes. Payments may be made as often as you like to suit your circumstances.

Additional payment items may be available at various times, 'giving days', for donating towards a specific fundraising goal.

3. Gift Aid

However you choose to contribute, if you are a UK tax payer, we can benefit further if you complete a Gift Aid Declaration form. This means that we can reclaim from HMRC any income tax you have paid on your donations to us, at a basic tax rate of 20%. The form can be accessed [here](#).

¹ The CCHS Foundation is not a distinct legal entity but a term we are using for this initiative under CCHS's exempt charitable status as an academy.

Ways to donate towards CCHS Capital projects:

1. TotalGiving

The School has set up an online fundraising page via [TotalGiving](#). This allows you to make regular or single contributions online using a credit or debit card. Gift Aid for eligible donations can also be processed through this route.

2. Giving through an employer scheme:

Payroll Giving

Payroll Giving (also known as ‘Give As You Earn’) is a valuable, long term source of revenue, providing regular income to help charities budget and plan more effectively. Your donation can often be made from your pre-tax income. Please ask your employer about this scheme.

As an academy, the School is considered to be an exempt charity and as such does not need to register with the Charity Commission. However, our charitable status is registered with HMRC. ‘Chelmsford County High School for Girls’ should be used as the reference on the payroll giving paperwork.

Company Gifts & Matched Funding

Some companies operate schemes allowing employees to nominate a charity for a company donation. This is often under a ‘matched funding’ programme whereby a company will match the donation made by the employee to their chosen charity. Please ask your employer about this scheme.

3. CAF Giving – more details

The Charities Aid Foundation (CAF) makes giving to charity easy. Through CAF, the value of your donation is increased via tax relief, and you have the option to donate anonymously.

4. Set up a regular payment by Standing Order with your Bank

This provides the School with a regular income to allow us to plan more effectively, and can be set to a payment amount, frequency and date to suit you. Please contact the school at finance@cchs.co.uk for our bank details.

5. Payment via ParentPay

You should find a payment item assigned to your daughter on [ParentPay](#) entitled ‘CCHS Buildings Appeal’. Payment may be made via debit or credit card, and the amount can be edited to suit your wishes. Payments may be made as often as you like to suit your circumstances.

Help us do more for your daughters – success through community

6. Gift Aid

Should you choose to contribute via bank standing order or ParentPay, if you are a UK tax payer we can benefit further if you complete a Gift Aid Declaration form. This means that we can reclaim from HMRC any income tax you have paid on your donations to us, at a basic tax rate of 20%. The form can be accessed [here](#).

Leaving a Legacy Please consider leaving the School a legacy in your will. If you leave a gift to a charity such as CCHS, its value will be deducted from your estate (your money, possessions and property) before Inheritance Tax is calculated.

Thank you,in advance, for any support you can provide to the students of CCHS

