



Inspiring the leaders of tomorrow to think for themselves and act for others

MESSAGE FROM MR LAWLOR

It was wonderful to welcome back colleagues and students to our School this week. Our INSET Days on Monday and Tuesday provided staff with opportunities to make final preparations for the new term and academic year ahead. We held our entrance test for the girls who will eventually join us next September. Thursday saw our Years 7 & 12 students start with us, including students new to our school in Year 12. Finally, all year groups were back at their school today.

As always, a new academic year is full of promise and opportunity, including our new ventures, the CCHS Foundation and CCHS@Chelmsford 120 years & CCHS@University 110 years.

Thank you, in advance, for the support and encouragement of our work with your daughters this year, as we progress our strong and shared commitment to excellence in girls' education and empowerment.

CCHS recognised in 'Best Schools' ranking

Many congratulations to the CCHS Community, whose work and accomplishments have been recognised in The Telegraph 'Best Schools' listing for the state schools with the highest GCSE grades. CCHS is 7th in the Top 100 Ranking, which is a testament to our brilliant students, talented staff and supportive CCHS families.

Indeed, the 2025–26 academic year marks the 120th anniversary of schooling at CCHS and the beginning of a girls' education community in Chelmsford. Wonderfully, this academic year also marks the 110th anniversary of the first CCHS Alumna to graduate from university – Winifred Picking, first-class degree in Natural Sciences from Girton College, Cambridge, 1916 – which was a key moment for our then developing school community, and an occasion for us to remember and be inspired by now.

CCHS@Chelmsford
120 Years

CCHS@University
110 Years

In Memoriam



On Tuesday 29th July, Mrs Gill Hickman, former CCHS colleague, passed away.

Mrs Hickman worked at CCHS from 1967 to 2004, starting as a teacher of Geography before being promoted to the lead the Department. Both a fondly regarded colleague and a highly respected teacher, Mrs Hickman contributed so much to our school community. She was a gifted teacher, who inspired countless students to progress their Geography studies through the school and on to university. Mrs Hickman was also heavily involved in learning beyond the classroom, through educational trips, enrichment activities, and House events.

Devoting nearly four decades of her professional life to our school distinguishes Mrs Hickman as an unwavering and exceptional servant to the CCHS community.

Mrs Hickman will be sadly missed and warmly remembered by the CCHS school community.

To remember and honour Mrs Hickman, we will be naming the Main Hall, 'Hickman Hall', with following citation:

This communal space is named in memory of and honour to Mrs Gill Hickman, who devoted nearly four decades of her life (1967 to 2004) to Chelmsford County High School for Girls, as a teacher, leader, colleague and friend.

CCHS – VISION, AIMS & VALUES

We amplify and fortify our vision and aims to cultivate core values which direct and drive our work. These values form our educational covenant with our school community:

CITIZENSHIP

Inspire future citizens to think for themselves and to act for others.

(Amplification of School Vision: 'Developing the leaders of tomorrow')



DUTY

Students will conduct themselves with civility and compassion at all times, supporting each other and looking beyond themselves.

(Amplification of School Aim 3: 'Contributing to the community')



DISTINCTION

Students will be provided with an outstanding education and we expect them to do their best in all endeavours. (Amplification of School Aim 1: 'The pursuit of excellence')



CHALLENGE

Students will be stimulated to acquire new knowledge & understanding and motivated to develop new skills & attributes. (Amplification of School Aim 2: 'Fulfilling individual potential')

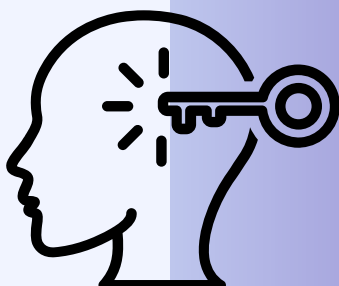
IMAGINATION

Enable students to explore new ideas and empathise with the thinking of others, without limitation or risk. (English, Sport and Arts subjects)



ENLIGHTENMENT

Equip students with the insight and determination to embrace new ideas, technology and innovation, enabling them to contribute to the ever-changing natural and physical world around them. (Mathematics, Computer Science and Natural Sciences subjects)



DIVERSITY

Provide students with the tools to respect and celebrate the great diversity of cultures, backgrounds and beliefs, within and beyond the School, whilst recognising that we have more in common than that which divides us. (Humanities, Languages and Social Sciences subjects)



Desiderata

GO PLACIDLY amid the noise

and the haste, and remember what peace there may be in silence. As far as possible, without surrender, be on good terms with all persons. Speak your truth quietly and clearly; and listen to others, even to the dull and the ignorant; they too have their story.

Avoid loud and aggressive persons; they are vexatious to the spirit. If you compare yourself with others, you may become vain or bitter, for always there will be greater and lesser persons than yourself.

Enjoy your achievements as well as your plans. Keep interested in your own career, however humble; it is a real possession in the changing fortunes of time.

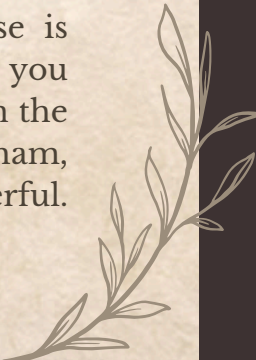
Exercise caution in your business affairs, for the world is full of trickery. But let this not blind you to what virtue there is; many persons strive for high ideals, and everywhere life is full of heroism. Be yourself. Especially do not feign affection. Neither be cynical about love; for in the face of all aridity and disenchantment, it is as perennial as the grass.

Take kindly the counsel of the years, gracefully surrendering the things of youth. Nurture strength of spirit to shield you in sudden misfortune. But do not distress yourself with dark imaginings. Many fears are born of fatigue and loneliness.

Beyond a wholesome discipline, be gentle with yourself. You are a child of the universe no less than the trees and the stars; you have a right to be here.

And whether or not it is clear to you, no doubt the universe is unfolding as it should. Therefore be at peace with God, whatever you conceive Him to be. And whatever your labors and aspirations, in the noisy confusion of life, keep peace in your soul. With all its sham, drudgery and broken dreams, it is still a beautiful world. Be cheerful. Strive to be happy.

by Max Ehrmann ©1927



Arrival at and departure from school

We continue to engage with local residents (First Avenue, Corporation Road, Swiss Avenue, Westfield Avenue and Elms Drive) concerning their experiences during student arrival and departure periods.

Further to my communications on this matter previously, I note below key points of information to support CCHS families:

- Chelmsford City Council provided the following about the use of Rectory Lane car park:

“Please be advised there is a standard five-minute grace period on all vehicles to allow the purchase of a pay and display ticket. Therefore, any vehicles that are in the car park for the purposes of dropping off and / or picking up should fall within that grace period.”

- As a result of the concerns raised by local residents regarding instances of inconsiderate and at times dangerous parking, South Essex Parking Partnership noted that their Parking Enforcement Team will be stepping up their patrols in the area.
- Our School Eco Committee is undertaking work, supported by the local authority, to explore how students travel to and from school, and how we could support both school families and the wider community with matters of travel, parking and congestion.
- Our Senior Leadership Team is working with local officials and local politicians on the matter of parking and congestion, and we have made suggestions to support this work, including the idea of creating a new entrance/exit point to the school site on the Chelmer Valley Road (east side of the campus).

Thank you, as ever, for your support in ensuring that we are mindful of local residents, as we work to keep people safe and relations cordial.

.....

Please be aware of your surroundings when dropping off and picking up students to and from school. The area directly outside our school, in Broomfield Road, is a very busy thoroughfare. A vehicle which is not parked safely can be dangerous for other vehicles, as can dropping off/picking up students in the buslane.



ROAD SAFETY

CCHS News this week...

THE TELEGRAPH 'BEST SCHOOLS' LISTING

Posted: 2nd September 2025

Many congratulations to the CCHS Community, whose work and accomplishments have been recognised in The Telegraph 'Best Schools' listing for the state schools with the highest GCSE grades. CCHS is 7th in the Top 100 Ranking, which is a testament to our brilliant students, talented staff and supportive CCHS families.

Indeed, the 2025-26 academic year marks the 120th anniversary of schooling at CCHS and the beginning of a girls' education community in Chelmsford. Wonderfully, this academic year also marks the 110th anniversary of the first CCHS Alumna to graduate from university – Winifred Picking, first-class degree in Natural Sciences from Girton College, Cambridge, 1916 – which was a key moment for our then developing school community, and an occasion for us to remember and be inspired by now.

CCHS@Chelmsford
120 Years

CCHS@University
110 Years

WELCOME TO OUR NEW YEAR 7 & YEAR 12 STUDENTS

Posted: 4th September 2025

We welcome our new Year 7 and Year 12 students today!



ESSAY COMPETITION WINNER!

Posted: 4th September 2025

Many congratulations to Tulasi (Year 13) who has won The British Society for the History of Mathematics essay competition! This year's topic was ethnomathematics, and Tulasi chose to research and write about the history of origami.

Mathematics – Chelmsford County High School for Girls

The CCHS Institute – Chelmsford County High School for Girls



BRITISH SOCIETY
FOR THE HISTORY
OF MATHEMATICS

CCHS STUDENTS' POEMS PUBLISHED

Posted: 5th September 2025

We are thrilled that 32 CCHS students have had their poems published in the 'Empowered' anthology this year. This is a collection of poetry and creative writing by young people who participated in the national 'Empowered' themed competition offered by Young Writers. These compilations, published in partnership with schools, showcase students' creative work and offer them a chance to become published authors!

English Language – Chelmsford County High School for Girls

English Literature – Chelmsford County High School for Girls



WELCOME BACK TO ALL OUR STUDENTS

Posted: 5th September 2025

We welcome all our students back to CCHS today for the start of the 2025-26 academic year!





Elevate Education's Autumn Term

Parent Webinar Series

Elevate Education delivers high-impact workshops to our students that help to develop their study skills, motivation, and exam preparation. Over the next term, you're invited to join their parent webinar series, where you can help support your child at home by reinforcing the skills they're learning at school.

How to Get (And Keep!) Your Child Motivated

16th September 6:00pm (BST)

How You Can Help Your Child Manage Their Time

30th September 6:00pm (BST)

How You Can Help Your Child Set Up for Success in Exams

14th October 6:00pm (BST)

How You Can Help Improve Your Child's Memory

18th November 6:00pm (GMT)

How You Can Build Resilience in Your Child

2nd December 6:00pm (GMT)

How to Help Your Child Alleviate Stress

16th December 6:00pm (GMT)

Register today at: <https://go.elevateeducation.com/ukschoolwebinar>



**ADULT &
CHILDRENS' CLOTHING**

**ORGANISED BY
CCHS
PARENTS'
ASSOCIATION**



**THE WEIGHT OF THE CLOTHING
MAKES MONEY FOR THE SCHOOL**

**REDUCE
REUSE
RECYCLE**

HOUSE CLOTHING COMPETITION!!



HANDBAGS

29TH SEPTEMBER

8-9AM

IN THE DINING AREA



SCARVES



HATS



BELTS

START SAVING UNWANTED CLOTHES NOW! 😊

**HELP YOUR HOUSE WIN
BY HAVING THE
GREATEST NUMBER OF
BAGS FULL OF
CLOTHING**



PAIRED SHOES



**CLOTHES BAGS WILL BE
DELIVERED TO YOUR
TUTOR GROUPS AND
EXTRA BAGS WILL BE
AVAILABLE FROM THE
FRONT OFFICE**



**FASHION
ACCESSORIES**





Chelmsford County High School for Girls

Keep on swimming!

Context

The CCHS swimming pool was built in the 1960s, partly from funds raised by CCHS families. Dedicated upgrading and maintenance work over the years has ensured that the pool has served generations of students and young people across the Chelmsford community.

At the moment, our pool supports the PE curriculum for our 1,162 students, as well as nearly 200 pupils from five local primary schools, and nearly 600 young people from the wider community who use our pool with clubs.

Our swimming pool is truly a community pool.

Fundraising

We estimate that the pool will require up to £250,000 over the next two years to bring it back to a suitable condition to support swimming in our community for the foreseeable future.

Our immediate need is to replace our aged boiler and gas pipework, which will cost approximately £35,000.

We will be organising some sponsored events and other fundraising activities, however if you are able to support us with any amount, we have a fundraising page available at <https://www.totalgiving.co.uk/appeal/Keep-CCHS-Swimming>

Goal

Now is the time to modernise this important community resource to preserve it for future generations of students, pupils and young people. We are asking for your support now, just as the CCHS community rallied in the 1960s to ensure a pool was built, to help us achieve this important goal.

