



Inspiring the leaders of tomorrow to think for themselves and act for others

MESSAGE FROM MR LAWLOR

It was wonderful to see the parents of our new Year 7 students on Tuesday this week at our New Parents' Welcome Evening. This provided an opportunity for families to meet each other, to meet key pastoral and academic staff, as well as members of the wonderful CCHS Parents' Association. If you wish to become involved in their important fundraising work for the school, please do visit the Parents' Association webpage for more information – thank you:
[Parents' Association \(The PA\) – Chelmsford County High School for Girls](#)

On Thursday, we were delighted to welcome parents to our Year 12 Meet the Tutor Evening, including the families of the brilliant new students who have joined our Sixth Form. Following their successes with their GCSE results in the summer, all our Year 12 students have now embarked on their personalised programmes of advanced study, including our new electives programme, which forms part of our enrichment and extra-curricular offer here at CCHS. You can find out more about the wealth of opportunities open to students in the CCHS Sixth Form on our website, including how we work with and support students with their university applications, degree apprenticeship applications, and much more:
[Sixth Form – Chelmsford County High School for Girls](#)



CCHS – VISION, AIMS & VALUES

We amplify and fortify our vision and aims to cultivate core values which direct and drive our work. These values form our educational covenant with our school community:

CITIZENSHIP

Inspire future citizens to think for themselves and to act for others.

(Amplification of School Vision: 'Developing the leaders of tomorrow')



DUTY

Students will conduct themselves with civility and compassion at all times, supporting each other and looking beyond themselves. (Amplification of School Aim 3: 'Contributing to the community')



DISTINCTION

Students will be provided with an outstanding education and we expect them to do their best in all endeavours. (Amplification of School Aim 1: 'The pursuit of excellence')



CHALLENGE

Students will be stimulated to acquire new knowledge & understanding and motivated to develop new skills & attributes. (Amplification of School Aim 2: 'Fulfilling individual potential')

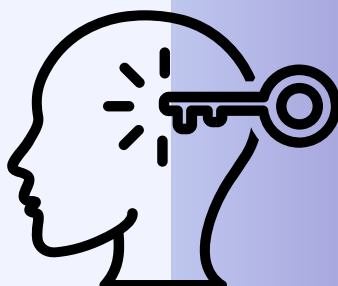
IMAGINATION

Enable students to explore new ideas and empathise with the thinking of others, without limitation or risk. (English, Sport and Arts subjects)



ENLIGHTENMENT

Equip students with the insight and determination to embrace new ideas, technology and innovation, enabling them to contribute to the ever-changing natural and physical world around them. (Mathematics, Computer Science and Natural Sciences subjects)



DIVERSITY

Provide students with the tools to respect and celebrate the great diversity of cultures, backgrounds and beliefs, within and beyond the School, whilst recognising that we have more in common than that which divides us. (Humanities, Languages and Social Sciences subjects)



Desiderata

GO PLACIDLY amid the noise

and the haste, and remember what peace there may be in silence. As far as possible, without surrender, be on good terms with all persons. Speak your truth quietly and clearly; and listen to others, even to the dull and the ignorant; they too have their story.

Avoid loud and aggressive persons; they are vexatious to the spirit. If you compare yourself with others, you may become vain or bitter, for always there will be greater and lesser persons than yourself.

Enjoy your achievements as well as your plans. Keep interested in your own career, however humble; it is a real possession in the changing fortunes of time.

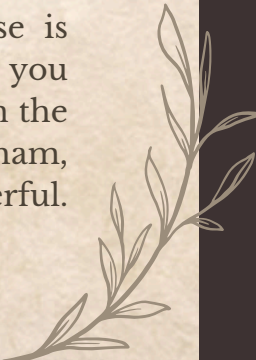
Exercise caution in your business affairs, for the world is full of trickery. But let this not blind you to what virtue there is; many persons strive for high ideals, and everywhere life is full of heroism. Be yourself. Especially do not feign affection. Neither be cynical about love; for in the face of all aridity and disenchantment, it is as perennial as the grass.

Take kindly the counsel of the years, gracefully surrendering the things of youth. Nurture strength of spirit to shield you in sudden misfortune. But do not distress yourself with dark imaginings. Many fears are born of fatigue and loneliness.

Beyond a wholesome discipline, be gentle with yourself. You are a child of the universe no less than the trees and the stars; you have a right to be here.

And whether or not it is clear to you, no doubt the universe is unfolding as it should. Therefore be at peace with God, whatever you conceive Him to be. And whatever your labors and aspirations, in the noisy confusion of life, keep peace in your soul. With all its sham, drudgery and broken dreams, it is still a beautiful world. Be cheerful. Strive to be happy.

by Max Ehrmann ©1927



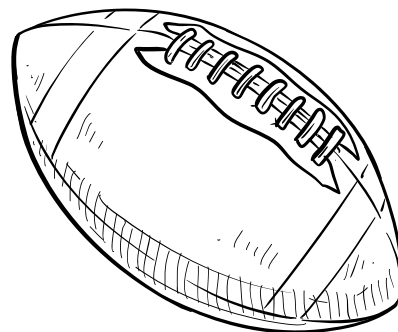


Student Achievements

Have you got some news to share?
If so, please email Mrs Gross (jgross@cchs.co.uk) and attach a photo or logo, if applicable.

Mia , (10A), has been selected to participate in the Player Development Group for Hertfordshire Rugby, which is the Foundation phase of the England Rugby Player Pathway, designed to find talented girls and provide them with development opportunities.

Congratulations, Mia!



Nikoletta, (10F), achieved 9/9 (270 out of 280) in her Greek GCSE this summer.

Congratulations, Nikoletta!

On Sunday 21st September at Chelmsford Cricket Clubs annual award ceremony Alexandra, (9G), was presented with two awards for the season.

The first presentation was for the U15 bowling award and the second was the club's most prestigious award for 'Colt of the year'.

There has only ever been one other girl awarded this trophy since 1977. It was a huge achievement to be presented with this award. Her batting and bowling statistics for the season were outstanding. She scored more runs and took more wickets than any other colt through all age groups in both boys and girls.

Congratulations, Alexandra!



Artist *of the week*



ARTIST OF THE WEEK- Amber in Year 12 for her pink biro drawing!!
So vibrant!

Arrival at and departure from school

We continue to engage with local residents (First Avenue, Corporation Road, Swiss Avenue, Westfield Avenue and Elms Drive) concerning their experiences during student arrival and departure periods.

Further to my communications on this matter previously, I note below key points of information to support CCHS families:

- Chelmsford City Council provided the following about the use of Rectory Lane car park:

“Please be advised there is a standard five-minute grace period on all vehicles to allow the purchase of a pay and display ticket. Therefore, any vehicles that are in the car park for the purposes of dropping off and / or picking up should fall within that grace period.”

- As a result of the concerns raised by local residents regarding instances of inconsiderate and at times dangerous parking, South Essex Parking Partnership noted that their Parking Enforcement Team will be stepping up their patrols in the area.
- Our School Eco Committee is undertaking work, supported by the local authority, to explore how students travel to and from school, and how we could support both school families and the wider community with matters of travel, parking and congestion.
- Our Senior Leadership Team is working with local officials and local politicians on the matter of parking and congestion, and we have made suggestions to support this work, including the idea of creating a new entrance/exit point to the school site on the Chelmer Valley Road (east side of the campus).

Thank you, as ever, for your support in ensuring that we are mindful of local residents, as we work to keep people safe and relations cordial.

.....

Please be aware of your surroundings when dropping off and picking up students to and from school. The area directly outside our school, in Broomfield Road, is a very busy thoroughfare. A vehicle which is not parked safely can be dangerous for other vehicles, as can dropping off/picking up students in the buslane.

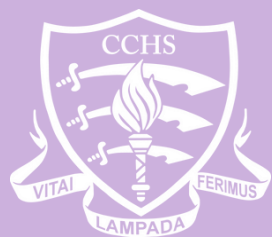


ROAD SAFETY

[illegible]

This week in PSHE

YEAR GROUP	WEDNESDAY 1 st OCTOBER				PERIOD 1	
	A	C	F	G	H	S
7	Personal safety					
8	Privacy on social media					
9	Alcohol Case studies					
10	Jack Petchey Speak out with English Department					
11	Teenage pregnancy	Social attitudes to nudes		Self defense	Social attitudes to nudes	
12	Elevate follow up (ASE)					
13	Final UCAS with tutor.					



CCHS PARENTS' ASSOCIATION

The Wishlist Lottery Winners for
August and September are:

August

Mr S. Kistapur
Mr J.S. Panadar
Mrs S. Knight

September

Mr & Mrs G. Burman
Mr M.K.P. Tan
Mr I Knight & Ms A. Rawlinson



Elevate Education's Autumn Term

Parent Webinar Series

Elevate Education delivers high-impact workshops to our students that help to develop their study skills, motivation, and exam preparation. Over the next term, you're invited to join their parent webinar series, where you can help support your child at home by reinforcing the skills they're learning at school.

How You Can Help Your Child Manage Their Time

30th September 6:00pm (BST)

How You Can Help Your Child Set Up for Success in Exams

14th October 6:00pm (BST)

How You Can Help Improve Your Child's Memory

18th November 6:00pm (GMT)

How You Can Build Resilience in Your Child

2nd December 6:00pm (GMT)

How to Help Your Child Alleviate Stress

16th December 6:00pm (GMT)

Register today at: <https://go.elevateeducation.com/ukschoolwebinar>

Parents' Association Annual General Meeting Invitation

Dear Parents and Carers,

All parents are warmly invited to attend the Annual General Meeting of the CCHS Parents' Association which will be held on **Wednesday 15th October 2025**, 7:00 for 7:30pm in the School Library.

The purpose of the meeting is to formally accept the accounts for the previous year and to elect officers and the committee as well as to give an overview of activities held during the year and the ways in which funds raised have been applied for the benefit of the girls. The proposed change from our present CCHS Parents' Association Constitution to the Parentkind Model Constitution will also be put to the vote.

The current officers are:

Chair: Julia Maranca (stepping down)

Vice Chair: Elaine Reade (year 9 parent)

Treasurers: Akram Ayyubi (year 9 parent)
Samira Ayyubi (stepping down)

Secretary: Nick Fearn (year 12 parent)

The proposed agenda for the meeting will be:

1. Apologies for absence (requested from officers/committee only)
2. Acceptance of previous minutes
3. Matters arising
4. Chair's report
5. Treasurer's report
6. Proposed change of CCHS PA Constitution to the Parentkind Model Constitution
7. Election of officers
8. Election of committee members
9. Any other business
10. Date of next meeting

If you have any queries please feel free to get in touch via email at:

pa@cchs.co.uk

ORGANISED BY
CCHS PA



AUTUMN DISCO

PRIZES

YEARS 7-9

WITH DJ JOJO

GAMES

10TH OCTOBER

7-9PM

£8 ON PARENTPAY
OR £10 ON ARRIVAL

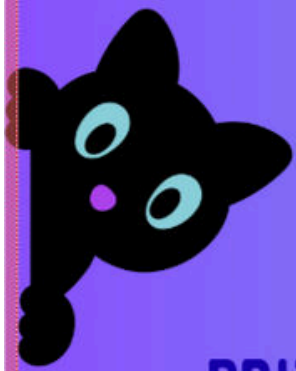
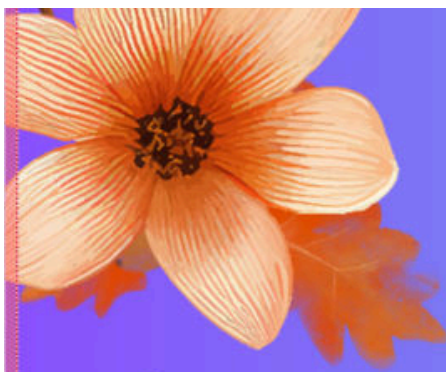
PHOTOPOD

THINGS TO BUY

WAFFLES

AUTUMN FANCY DRESS (OPTIONAL) - PRIZE FOR BEST OUTFIT!

CASH & CARD ACCEPTED





**ADULT &
CHILDRENS' CLOTHING**

**ORGANISED BY
CCHS
PARENTS'
ASSOCIATION**



=



**THE WEIGHT OF THE CLOTHING
MAKES MONEY FOR THE SCHOOL**



**REDUCE
REUSE
RECYCLE**

HOUSE CLOTHING COMPETITION!!



HANDBAGS

29TH SEPTEMBER

8-9AM



SCARVES

IN THE DINING AREA



HATS



BELTS

START SAVING UNWANTED CLOTHES NOW! 😊

**HELP YOUR HOUSE WIN
BY HAVING THE
GREATEST NUMBER OF
BAGS FULL OF
CLOTHING**



PAIRED SHOES



**CLOTHES BAGS WILL BE
DELIVERED TO YOUR
TUTOR GROUPS AND
EXTRA BAGS WILL BE
AVAILABLE FROM THE
FRONT OFFICE**



**FASHION
ACCESSORIES**





CCHS PARENTS' ASSOCIATION

CCHS WINTER FAYRE

CRAFT STALLS
FOOD & DRINKS
GAMES - RAFFLE
LIVE MUSIC

11 a.m. - 2 p.m.
Saturday 22nd November.
2025

ADMISSION £1
STUDENTS FREE
CARD MACHINE AVAILABLE

CHELMSFORD COUNTY HIGH SCHOOL,
BROOMFIELD ROAD, CHELMSFORD



🎄 Winter Fayre – Call for Craft & Trade Stalls 🎄

Date: Saturday 22nd November 11am - 2pm

Location: Chelmsford County High School

We're excited to be holding our **Winter Fayre** and are inviting **established craftandtrade stallholders** to join us!

👉 Do you run a craftortrade business?

👉 Would you like to showcase yourwork and be part of our festive communityevent?

✨ This is a great opportunity to share yourcreativity, promote your business, and support our schoolcommunity.

Important:

- Stallholders **must be an existing business**
- **PublicLiability Insurance is required**

Howto apply:

If you'd like to book a stall or find outmore, please contact:

✉️ pa@cchs.co.uk

We'd love to see your crafts, gifts, andfestive creations at our Winter Fayre!



PRESS RELEASE

22nd September 2025



Chelmsford County High School for Girls awarded The PTI Subject Mark for outstanding teaching in English, Mathematics and German.

Chelmsford County High School for Girls has been awarded The PTI Department Development Programme Subject Mark for outstanding teaching in English, Mathematics and German Departments.

The PTI launched the Department Development Programme in 2007 to recognise and reward school departments that develop inspirational ideas and activities which enhance the teaching of Art, D&T, English, Geography, History, Mathematics, Modern Foreign Languages, Music, PE and Science, regardless of their students' backgrounds or abilities.

Stephen Lawlor, Headteacher at Chelmsford County High School for Girls, said: "Many congratulations to all the colleagues whose outstanding practice has been recognised and rewarded with the prestigious Prince's Teaching Institute Subject Mark. We are proud to continue our innovative work with The Prince's Teaching Institute as part of our commitment to excellence in girls' education and empowerment."

The PTI's Department Development Programme is open to all state secondary schools in England. To become members, school departments must demonstrate their commitment to increasing teachers' subject knowledge, and to furthering their students' understanding of and enthusiasm for the subject, regardless of their background or ability.

To achieve The PTI Subject Mark, departments have to demonstrate that they have increased the challenge within their subject curriculum, developed their staff's specialist subject knowledge, developed subject-based links outside school and enthused their pupils through subject-based activities beyond the curriculum.

After three years of Department Development Programme membership, departments may choose to conduct a Department Development Project by devising an advanced multi-year programme in one of these areas.

To find out more about the Department Development Programme, visit www.ptieducation.org.

ENDS

Notes for Editors

The PTI

Media enquiries should be directed to Lauren Adair at Lauren Adair laurena@rokhglobal.com
The Department Development Programme recognises and facilitates the achievement of excellence in schools and is an expansion of the annual Subject Enrichment Residential run by The PTI.

In order to become members of the Department Development Programme, schools must consider particular criteria for excellence within subject specialist provision:

- Clear commitment to the subject specialism
- Evidence of a high level of pupil engagement and attainment in the subject
- Pupils' access to a range of extra-curricular activities related to the subject, both within school and off-site
- Subject-based links and partnerships with other schools and areas of the community
- Breadth and depth of study, ensured through coherent planning and monitoring
- Coherence and challenge, identified and developed in curriculum planning and delivery
- Departmental commitment to subject-based continuing professional development
- Effective and inspiring teaching.

The school's Head of Department decides how their departmental plan for the forthcoming year can be enriched through ideas gained from participation at a PTI Department Development Programme Day or Subject Enrichment Residential.

A written application form is reviewed by teachers from other schools who work with The PTI, and the objectives for the department are mutually agreed. The PTI Mark is given at the end of the year for departments that achieve their objectives.

More than 2,500 teachers have attended PTI Subject Enrichment Residential since the first Prince of Wales Education Summer School was held in 2002. Alumni of the Subject Enrichment Residential who have chosen to join the Department Development Programme meet annually at PTI Department Development Programme Day.

In addition, PTI regional events are organised across the country, bringing together local teachers, academics and eminent speakers and writers.

The PTI also organises an annual conference for Headteachers and in 2011/12 launched a School Leadership Programme for Heads and their senior leadership teams. In 2014 The PTI hosted its first annual conference for Primary Headteachers.

The PTI was constituted in 2006 as a registered charity (1116224) to provide more systematic support for teachers. It works in strategic partnership with the University of Cambridge.

See www.ptieducation.org



IF IN DOUBT, SIT THEM OUT

UK Concussion Guidelines for Non-Elite (Grassroots) Sport

Participants in grassroots sports will be better protected from the potentially devastating effects of head injuries and concussion thanks to new official guidelines advising: *'if in doubt, sit them out'*.

The Government and the Sport and Recreation Alliance today publishes the first UK-wide Concussion Guidelines for Grassroots Sport which will help players, coaches, parents, schools, National Governing Bodies and sports administrators to identify, manage and prevent the issue.

[The UK Concussion Guidelines for Non-Elite \(Grassroots\) Sport can be viewed here.](#)

The guidelines, developed by an expert panel of domestic and international clinicians and academics in neurology and sports medicine, sets out steps to improve understanding and awareness of the prevention and treatment of concussion in grassroots sport where trained medical professionals are less likely to be routinely present. It is targeted at people of all ages.

'If in doubt, sit them out' is the strapline, making clear no-one should return to sport within 24 hours of a suspected concussion and builds on guidance already introduced in Scotland.

Players, parents, coaches, teachers and administrators are now asked to read the guidance and familiarise themselves with the necessary steps to:

- **RECOGNISE** the signs of concussion;
- **REMOVE** anyone suspected of being concussed immediately and;
- **RETURN** safely to daily activity, education/work and, ultimately, sport.

Help us do more for your daughters – success through community



Success through Community

We are launching the CCHS Foundation¹ as a school community enterprise dedicated to raising funds, through voluntary contributions each year, to provide your daughters with more:

- more resources, including books, journals and websites
- more facilities, including
- ICT infrastructure and digital learning devices
- and more opportunities, including
- enrichment activities and educational visits

How to contribute financially towards the CCHS Foundation:

1. Set up a Regular payment by Standing Order with your Bank

This provides the Foundation with a regular income to allow us to plan ahead more effectively, and can be set to a payment amount, frequency and date to suit you. Please contact the school at finance@cchs.co.uk for our bank details.

2. Payment via ParentPay

You should find a payment item assigned to your daughter on [ParentPay](#) entitled 'Donate to CCHS Foundation'. Payment may be made via debit or credit card, and the amount can be edited to suit your wishes. Payments may be made as often as you like to suit your circumstances.

Additional payment items may be available at various times, 'giving days', for donating towards a specific fundraising goal.

3. Gift Aid

However you choose to contribute, if you are a UK tax payer, we can benefit further if you complete a Gift Aid Declaration form. This means that we can reclaim from HMRC any income tax you have paid on your donations to us, at a basic tax rate of 20%. The form can be accessed [here](#).

¹ The CCHS Foundation is not a distinct legal entity but a term we are using for this initiative under CCHS's exempt charitable status as an academy.

Ways to donate towards CCHS Capital projects:

1. TotalGiving

The School has set up an online fundraising page via [TotalGiving](#). This allows you to make regular or single contributions online using a credit or debit card. Gift Aid for eligible donations can also be processed through this route.

2. Giving through an employer scheme:

Payroll Giving

Payroll Giving (also known as ‘Give As You Earn’) is a valuable, long term source of revenue, providing regular income to help charities budget and plan more effectively. Your donation can often be made from your pre-tax income. Please ask your employer about this scheme.

As an academy, the School is considered to be an exempt charity and as such does not need to register with the Charity Commission. However, our charitable status is registered with HMRC. ‘Chelmsford County High School for Girls’ should be used as the reference on the payroll giving paperwork.

Company Gifts & Matched Funding

Some companies operate schemes allowing employees to nominate a charity for a company donation. This is often under a ‘matched funding’ programme whereby a company will match the donation made by the employee to their chosen charity. Please ask your employer about this scheme.

3. CAF Giving – more details

The Charities Aid Foundation (CAF) makes giving to charity easy. Through CAF, the value of your donation is increased via tax relief, and you have the option to donate anonymously.

4. Set up a regular payment by Standing Order with your Bank

This provides the School with a regular income to allow us to plan more effectively, and can be set to a payment amount, frequency and date to suit you. Please contact the school at finance@cchs.co.uk for our bank details.

5. Payment via ParentPay

You should find a payment item assigned to your daughter on [ParentPay](#) entitled ‘CCHS Buildings Appeal’. Payment may be made via debit or credit card, and the amount can be edited to suit your wishes. Payments may be made as often as you like to suit your circumstances.

Help us do more for your daughters – success through community

6. Gift Aid

Should you choose to contribute via bank standing order or ParentPay, if you are a UK tax payer we can benefit further if you complete a Gift Aid Declaration form. This means that we can reclaim from HMRC any income tax you have paid on your donations to us, at a basic tax rate of 20%. The form can be accessed [here](#).

Leaving a Legacy Please consider leaving the School a legacy in your will. If you leave a gift to a charity such as CCHS, its value will be deducted from your estate (your money, possessions and property) before Inheritance Tax is calculated.

Thank you,in advance, for any support you can provide to the students of CCHS

