



Inspiring the leaders of tomorrow to think for themselves and act for others

### *MESSAGE FROM MR LAWLOR*

---



Chelmsford County High School for Girls (CCHS) had its official opening ceremony on 1<sup>st</sup> May 1907; however, the first girls actually began their studies at the school in 1906. Happily, the 2025–26 academic year marks the 120<sup>th</sup> anniversary of schooling at CCHS and the beginning of a girls' education community in Chelmsford.

# History of CCHS

## The First Ten Years

In June 1916 Winifred Picking (later Mrs Parsons) became the school's first University success when she gained a First Class degree at Girton, Cambridge.

The above citation appears on our school website. Wonderfully, the 2025-26 academic year also marks the 110<sup>th</sup> anniversary of the first CCHS Alumna to graduate from university – Winifred Picking, first-class degree in Natural Sciences from Girton College, Cambridge, 1916 – which was a key moment for our then developing school community, and an occasion for us to remember now.

So, the 2025-26 academic year will be one to celebrate girls' education and empowerment through CCHS, centred on a commemoration of the 120<sup>th</sup> anniversary of schooling at CCHS and the 110<sup>th</sup> anniversary of Winifred's university graduation.

We will use a series of school, national and international events to frame these important celebrations, including:

- International Day of the Girl (11<sup>th</sup> October) & the ICGS Student Leadership Symposium and the CCHS Leadership Conference, both taking place in October
- International Day of Education (24<sup>th</sup> January)
- International Women's Day (8<sup>th</sup> March)
- CCHS Commemoration (May)
- Senior Prefect Afternoon (July)

# East Hanningfield Archive

## **Parsons - Emily Winifred Parsons nee Picking.**

An obituary published in the Cambridge Evening News on Tuesday 8th. July, 1980. Emily grew up in East Hanningfield and was the eldest daughter of Harry and Emily Picking who were master and mistress at the village school.

Cambridge Evening News Tuesday 8 July 1980.

## Leading education and health activist dies

A Cambridge woman who dedicated much of her life to health and education has died.

Mrs. Emily Winifred Parsons, aged 85, who died at a Littleport nursing home at the weekend, was awarded the CBE in 1974 for her public services in Cambridgeshire.

Mrs. Parsons, a widow who lived at 4 Clarkson Road, Cambridge, helped pioneer the introduction of village colleges.

One of her three daughters, Mrs. Rosalind Buffrey, of 2 Clarkson Road said, "Health and education were her main interests".

Mrs. Parsons, a former city alderman, was chairman of the former Cambridgeshire and Isle of Ely Education Committee and served on the United Cambridge Hospitals Committee for more than 20 years.

She was a county councillor between 1937 and 1974, served as a governor at Addenbrookes Hospital when the board was formed in 1948 and took part in planning of the new one.

She became hospital board chairman in 1966 after a 10 year term as vice-chairman.

Mrs Parson was national chairman of the British and Foreign School Society and was also a member of the Cambridge and Isle of Ely Naturalists Trust.



# CCHS – VISION, AIMS & VALUES

We amplify and fortify our vision and aims to cultivate core values which direct and drive our work. These values form our educational covenant with our school community:

## CITIZENSHIP

Inspire future citizens to think for themselves and to act for others.

(Amplification of School Vision: 'Developing the leaders of tomorrow')



## DUTY

Students will conduct themselves with civility and compassion at all times, supporting each other and looking beyond themselves.

(Amplification of School Aim 3: 'Contributing to the community')



## DISTINCTION

Students will be provided with an outstanding education and we expect them to do their best in all endeavours. (Amplification of School Aim 1: 'The pursuit of excellence')



## CHALLENGE

Students will be stimulated to acquire new knowledge & understanding and motivated to develop new skills & attributes. (Amplification of School Aim 2: 'Fulfilling individual potential')

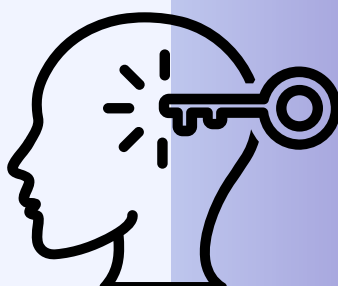
## IMAGINATION

Enable students to explore new ideas and empathise with the thinking of others, without limitation or risk. (English, Sport and Arts subjects)



## ENLIGHTENMENT

Equip students with the insight and determination to embrace new ideas, technology and innovation, enabling them to contribute to the ever-changing natural and physical world around them. (Mathematics, Computer Science and Natural Sciences subjects)



## DIVERSITY

Provide students with the tools to respect and celebrate the great diversity of cultures, backgrounds and beliefs, within and beyond the School, whilst recognising that we have more in common than that which divides us. (Humanities, Languages and Social Sciences subjects)



# Desiderata

## GO PLACIDLY amid the noise

and the haste, and remember what peace there may be in silence. As far as possible, without surrender, be on good terms with all persons. Speak your truth quietly and clearly; and listen to others, even to the dull and the ignorant; they too have their story.

Avoid loud and aggressive persons; they are vexatious to the spirit. If you compare yourself with others, you may become vain or bitter, for always there will be greater and lesser persons than yourself.

Enjoy your achievements as well as your plans. Keep interested in your own career, however humble; it is a real possession in the changing fortunes of time.

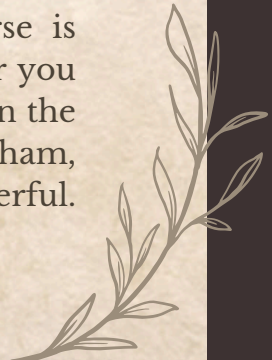
Exercise caution in your business affairs, for the world is full of trickery. But let this not blind you to what virtue there is; many persons strive for high ideals, and everywhere life is full of heroism. Be yourself. Especially do not feign affection. Neither be cynical about love; for in the face of all aridity and disenchantment, it is as perennial as the grass.

Take kindly the counsel of the years, gracefully surrendering the things of youth. Nurture strength of spirit to shield you in sudden misfortune. But do not distress yourself with dark imaginings. Many fears are born of fatigue and loneliness.

Beyond a wholesome discipline, be gentle with yourself. You are a child of the universe no less than the trees and the stars; you have a right to be here.

And whether or not it is clear to you, no doubt the universe is unfolding as it should. Therefore be at peace with God, whatever you conceive Him to be. And whatever your labors and aspirations, in the noisy confusion of life, keep peace in your soul. With all its sham, drudgery and broken dreams, it is still a beautiful world. Be cheerful. Strive to be happy.

by Max Ehrmann ©1927







# Student Achievements

Have you got some news to share?  
If so, please email Mrs Gross ([jgross@cchs.co.uk](mailto:jgross@cchs.co.uk)) and attach a photo or logo, if applicable.

Mishal, 7S, has been selected for the Essex Girls' Cricket 2026 programme after a few observations, whilst working very hard and can't wait to start soon for winter training.

Congratulations, Mishal!



**WE ARE ESSEX.  
WE ARE THE EAGLES.**

AMBASSADOR

D&D  
SCAFFOLDING LTD

woodland  
Group



## Artist *of the week*



ARTIST OF THE WEEK- Annie in Year 10 for her incredible snail drawing. Kicking off the year with a brilliant start. Well done.

# Arrival at and departure from school

We continue to engage with local residents (First Avenue, Corporation Road, Swiss Avenue, Westfield Avenue and Elms Drive) concerning their experiences during student arrival and departure periods.

Further to my communications on this matter previously, I note below key points of information to support CCHS families:

- Chelmsford City Council provided the following about the use of Rectory Lane car park:

*“Please be advised there is a standard five-minute grace period on all vehicles to allow the purchase of a pay and display ticket. Therefore, any vehicles that are in the car park for the purposes of dropping off and / or picking up should fall within that grace period.”*

- As a result of the concerns raised by local residents regarding instances of inconsiderate and at times dangerous parking, South Essex Parking Partnership noted that their Parking Enforcement Team will be stepping up their patrols in the area.
- Our School Eco Committee is undertaking work, supported by the local authority, to explore how students travel to and from school, and how we could support both school families and the wider community with matters of travel, parking and congestion.
- Our Senior Leadership Team is working with local officials and local politicians on the matter of parking and congestion, and we have made suggestions to support this work, including the idea of creating a new entrance/exit point to the school site on the Chelmer Valley Road (east side of the campus).

Thank you, as ever, for your support in ensuring that we are mindful of local residents, as we work to keep people safe and relations cordial.

.....

Please be aware of your surroundings when dropping off and picking up students to and from school. The area directly outside our school, in Broomfield Road, is a very busy thoroughfare. A vehicle which is not parked safely can be dangerous for other vehicles, as can dropping off/picking up students in the buslane.



# ROAD SAFETY



# CCHS News this week...

## YEAR 12 FRESHERS' FAYRE

Posted: 16th September 2025

We are looking forward to our Year 12 Freshers' Fayre today: an opportunity for students to find out about and get involved in the host of clubs and societies which are offered at CCHS.

Student Societies – Chelmsford County High School for Girls



## CCHS PARENTS' ASSOCIATION

Posted: 19th September 2025

Thank you, as ever, to the wonderful CCHS Parents' Association, and all the families and colleagues who support their work. The first of many fundraising events takes place today!

Parents' Association (The PA) – Chelmsford County High School for Girls



### CCHS Parents' Association

*Working to Support*  
**Chelmsford County High School**  
**for Girls**  
A Grammar School with Academic Status

## THE PRINCE'S TEACHING INSTITUTE SUBJECT MARK FOR MATHS 2025

Posted: 19th September 2025

Many congratulations to the brilliant CCHS Mathematics Department – the Prince's Teaching Institute has again recognised the excellence of their work by awarding them the prestigious PTI Subject Mark.

The Prince's Teaching Institute – Chelmsford County High School for Girls





After the event finishes at 7.00pm, the CCHS Parents' Association would be delighted to welcome parents to join them for tea and biscuits in the Main Hall from 7.00pm to 8.00pm, which will also offer parents an opportunity to socialise and network with each other.

# This week in PSJT

YEAR	TUESDAY 23 <sup>rd</sup> SEPTEMBER				PERIOD 1	
GROUP	A	C	F	G	H	S
7	Introduction to PSHE					
8	Personal data					
9	Alcohol information					
10	Building resilience					
11	Risky behaviour	Self defence		Teenage pregnancy.		
12	Wize Up Financial Education					
13	UCAS with Tutor					



Elevate Education's Autumn Term

# Parent Webinar Series

Elevate Education delivers high-impact workshops to our students that help to develop their study skills, motivation, and exam preparation. Over the next term, you're invited to join their parent webinar series, where you can help support your child at home by reinforcing the skills they're learning at school.

## ***How You Can Help Your Child Manage Their Time***

30th September 6:00pm (BST)

## ***How You Can Help Your Child Set Up for Success in Exams***

14th October 6:00pm (BST)

## ***How You Can Help Improve Your Child's Memory***

18th November 6:00pm (GMT)

## ***How You Can Build Resilience in Your Child***

2nd December 6:00pm (GMT)

## ***How to Help Your Child Alleviate Stress***

16th December 6:00pm (GMT)

Register today at: <https://go.elevateeducation.com/ukschoolwebinar>



# Parents' Association Annual General Meeting Invitation

Dear Parents and Carers,

All parents are warmly invited to attend the Annual General Meeting of the CCHS Parents' Association which will be held on **Wednesday 15th October 2025**, 7:00 for 7:30pm in the School Library.

The purpose of the meeting is to formally accept the accounts for the previous year and to elect officers and the committee as well as to give an overview of activities held during the year and the ways in which funds raised have been applied for the benefit of the girls. The proposed change from our present CCHS Parents' Association Constitution to the Parentkind Model Constitution will also be put to the vote.

The current officers are:

**Chair:** Julia Maranca (stepping down)

**Vice Chair:** Elaine Reade (year 9 parent)

**Treasurers:** Akram Ayyubi (year 9 parent)  
Samira Ayyubi (stepping down)

**Secretary:** Nick Fearn (year 12 parent)

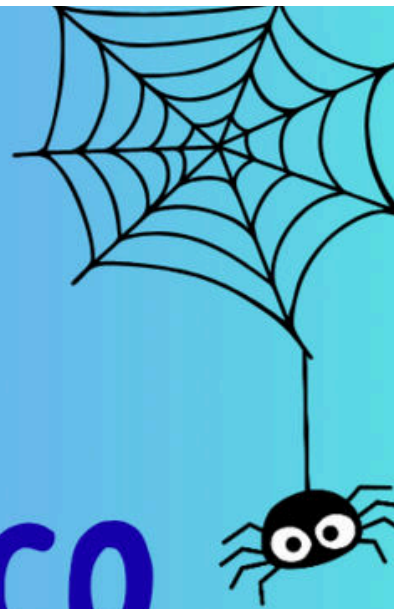
The proposed agenda for the meeting will be:

1. Apologies for absence (requested from officers/committee only)
2. Acceptance of previous minutes
3. Matters arising
4. Chair's report
5. Treasurer's report
6. Proposed change of CCHS PA Constitution to the Parentkind Model Constitution
7. Election of officers
8. Election of committee members
9. Any other business
10. Date of next meeting

If you have any queries please feel free to get in touch via email at:

[pa@cchs.co.uk](mailto:pa@cchs.co.uk)

ORGANISED BY  
CCHS PA



# AUTUMN DISCO

PRIZES

YEARS 7-9

WITH DJ JOJO

GAMES

10<sup>TH</sup> OCTOBER

7-9PM

£8 ON PARENTPAY  
OR £10 ON ARRIVAL

PHOTOPOD

THINGS TO BUY

WAFFLES

AUTUMN FANCY DRESS (OPTIONAL) - PRIZE FOR BEST OUTFIT!

CASH & CARD ACCEPTED







**ADULT &  
CHILDRENS' CLOTHING**

**ORGANISED BY  
CCHS  
PARENTS'  
ASSOCIATION**



=



**THE WEIGHT OF THE CLOTHING  
MAKES MONEY FOR THE SCHOOL**



**REDUCE  
REUSE  
RECYCLE**

# **HOUSE CLOTHING COMPETITION!!**



**HANDBAGS**

**29<sup>TH</sup> SEPTEMBER**

**8-9AM**

**IN THE DINING AREA**



**SCARVES**



**HATS**



**BELTS**

**START SAVING UNWANTED CLOTHES NOW!** 😊

**HELP YOUR HOUSE WIN  
BY HAVING THE  
GREATEST NUMBER OF  
BAGS FULL OF  
CLOTHING**



**PAIRED SHOES**



**CLOTHES BAGS WILL BE  
DELIVERED TO YOUR  
TUTOR GROUPS AND  
EXTRA BAGS WILL BE  
AVAILABLE FROM THE  
FRONT OFFICE**



**FASHION  
ACCESSORIES**







# IF IN DOUBT, SIT THEM OUT

## UK Concussion Guidelines for Non-Elite (Grassroots) Sport

Participants in grassroots sports will be better protected from the potentially devastating effects of head injuries and concussion thanks to new official guidelines advising: *'if in doubt, sit them out'*.

The Government and the Sport and Recreation Alliance today publishes the first UK-wide Concussion Guidelines for Grassroots Sport which will help players, coaches, parents, schools, National Governing Bodies and sports administrators to identify, manage and prevent the issue.

[The UK Concussion Guidelines for Non-Elite \(Grassroots\) Sport can be viewed here.](#)

The guidelines, developed by an expert panel of domestic and international clinicians and academics in neurology and sports medicine, sets out steps to improve understanding and awareness of the prevention and treatment of concussion in grassroots sport where trained medical professionals are less likely to be routinely present. It is targeted at people of all ages.

*'If in doubt, sit them out'* is the strapline, making clear no-one should return to sport within 24 hours of a suspected concussion and builds on guidance already introduced in Scotland.

Players, parents, coaches, teachers and administrators are now asked to read the guidance and familiarise themselves with the necessary steps to:

- **RECOGNISE** the signs of concussion;
- **REMOVE** anyone suspected of being concussed immediately and;
- **RETURN** safely to daily activity, education/work and, ultimately, sport.



Help us do more for your daughters – success through community



## Success through Community

We are launching the CCHS Foundation<sup>1</sup> as a school community enterprise dedicated to raising funds, through voluntary contributions each year, to provide your daughters with more:

- more resources, including books, journals and websites
- more facilities, including
- ICT infrastructure and digital learning devices
- and more opportunities, including
- enrichment activities and educational visits

### **How to contribute financially towards the CCHS Foundation:**

#### 1. Set up a Regular payment by Standing Order with your Bank

This provides the Foundation with a regular income to allow us to plan ahead more effectively, and can be set to a payment amount, frequency and date to suit you. Please contact the school at [finance@cchs.co.uk](mailto:finance@cchs.co.uk) for our bank details.

#### 2. Payment via ParentPay

You should find a payment item assigned to your daughter on [ParentPay](#) entitled 'Donate to CCHS Foundation'. Payment may be made via debit or credit card, and the amount can be edited to suit your wishes. Payments may be made as often as you like to suit your circumstances.

Additional payment items may be available at various times, 'giving days', for donating towards a specific fundraising goal.

#### 3. Gift Aid

However you choose to contribute, if you are a UK tax payer, we can benefit further if you complete a Gift Aid Declaration form. This means that we can reclaim from HMRC any income tax you have paid on your donations to us, at a basic tax rate of 20%. The form can be accessed [here](#).

---

<sup>1</sup> The CCHS Foundation is not a distinct legal entity but a term we are using for this initiative under CCHS's exempt charitable status as an academy.

## **Ways to donate towards CCHS Capital projects:**

### **1. TotalGiving**

The School has set up an online fundraising page via [TotalGiving](#). This allows you to make regular or single contributions online using a credit or debit card. Gift Aid for eligible donations can also be processed through this route.

### **2. Giving through an employer scheme:**

#### **Payroll Giving**

Payroll Giving (also known as ‘Give As You Earn’) is a valuable, long term source of revenue, providing regular income to help charities budget and plan more effectively. Your donation can often be made from your pre-tax income. Please ask your employer about this scheme.

As an academy, the School is considered to be an exempt charity and as such does not need to register with the Charity Commission. However, our charitable status is registered with HMRC. ‘Chelmsford County High School for Girls’ should be used as the reference on the payroll giving paperwork.

#### **Company Gifts & Matched Funding**

Some companies operate schemes allowing employees to nominate a charity for a company donation. This is often under a ‘matched funding’ programme whereby a company will match the donation made by the employee to their chosen charity. Please ask your employer about this scheme.

### **3. CAF Giving – more details**

The Charities Aid Foundation (CAF) makes giving to charity easy. Through CAF, the value of your donation is increased via tax relief, and you have the option to donate anonymously.

### **4. Set up a regular payment by Standing Order with your Bank**

This provides the School with a regular income to allow us to plan more effectively, and can be set to a payment amount, frequency and date to suit you. Please contact the school at [finance@cchs.co.uk](mailto:finance@cchs.co.uk) for our bank details.

### **5. Payment via ParentPay**

You should find a payment item assigned to your daughter on [ParentPay](#) entitled ‘CCHS Buildings Appeal’. Payment may be made via debit or credit card, and the amount can be edited to suit your wishes. Payments may be made as often as you like to suit your circumstances.



Help us do more for your daughters – success through community

6. Gift Aid

Should you choose to contribute via bank standing order or ParentPay, if you are a UK tax payer we can benefit further if you complete a Gift Aid Declaration form. This means that we can reclaim from HMRC any income tax you have paid on your donations to us, at a basic tax rate of 20%. The form can be accessed [here](#).

**Leaving a Legacy** Please consider leaving the School a legacy in your will. If you leave a gift to a charity such as CCHS, its value will be deducted from your estate (your money, possessions and property) before Inheritance Tax is calculated.

Thank you, in advance, for any support you can provide to the students of CCHS

