



Inspiring the leaders of tomorrow to think for themselves and act for others

MESSAGE FROM MR LAWLOR



Success through Community

- More funding increases opportunity and enhances achievement for your daughters.
- Your daughters deserve the very best from their school community.
- Let us work together to achieve this: success through community.

Context

- National funding for state schools is increasingly inadequate.
- We will not compromise our ambition for our students; our history and role as a girls' school are too important.
- CCHS had its official opening ceremony in 1907; however, the first girls actually began their studies at the school in 1906. The 2025-26 academic year marks the 120th anniversary of schooling at CCHS and the beginning of a girls' education community in Chelmsford.
- Moreover, the 2025-26 academic year marks the 110th anniversary of the first CCHS Alumna to graduate from university: Winifred Picking, first-class degree in Natural Science, Girton, Cambridge, 1916.
- Our continuing significant work requires more funding.

Objectives

We are launching the CCHS Foundation, a school community enterprise dedicated to raising funds through voluntary contributions each year, to provide your daughters with more:

- more resources, including books, journals and websites
- more facilities, including ICT infrastructure and digital learning devices
- and more opportunities, including enrichment activities and educational visits

With a membership drawn from staff, students, parents, alumnae and trustees, we are collectively committed to *success through community*. The CCHS Foundation will inspire regular voluntary donations and fundraising to provide your daughters with more and better. To assess the success of this school community enterprise, we will track the following Key Performance Indicators:

- Engagement – number of donors, volunteers and participating families.
- Funds raised – monthly, termly and annually.
- Impact – enhancements to student resources, facilities and opportunities.

Help us to do more for your daughters – success through community



In Memoriam



On Tuesday 29th July, Mrs Gill Hickman, former CCHS colleague, passed away.

Mrs Hickman worked at CCHS from 1967 to 2004, starting as a teacher of Geography before being promoted to lead the Faculty. Both a fondly regarded colleague and a highly respected teacher, Mrs Hickman contributed so much to our school community. She was a gifted teacher, who inspired countless students to progress their Geography studies through the school and on to university. Mrs Hickman was also heavily involved in learning beyond the classroom, through educational trips, enrichment activities, and House events.

Devoting nearly four decades of her professional life to our school distinguishes Mrs Hickman as an unwavering and exceptional servant to the CCHS community.

Mrs Hickman will be sadly missed and warmly remembered by the CCHS school community.

To remember and honour Mrs Hickman, we will be naming the Main Hall, 'Hickman Hall', with following citation:

This communal space is named in memory of and honour to Mrs Gill Hickman, who devoted nearly four decades of her life (1967 to 2004) to Chelmsford County High School for Girls, as a teacher, leader, colleague and friend.

CCHS – VISION, AIMS & VALUES

We amplify and fortify our vision and aims to cultivate core values which direct and drive our work. These values form our educational covenant with our school community:

CITIZENSHIP

Inspire future citizens to think for themselves and to act for others.

(Amplification of School Vision: 'Developing the leaders of tomorrow')



DUTY

Students will conduct themselves with civility and compassion at all times, supporting each other and looking beyond themselves. (Amplification of School Aim 3: 'Contributing to the community')



DISTINCTION

Students will be provided with an outstanding education and we expect them to do their best in all endeavours. (Amplification of School Aim 1: 'The pursuit of excellence')



CHALLENGE

Students will be stimulated to acquire new knowledge & understanding and motivated to develop new skills & attributes. (Amplification of School Aim 2: 'Fulfilling individual potential')

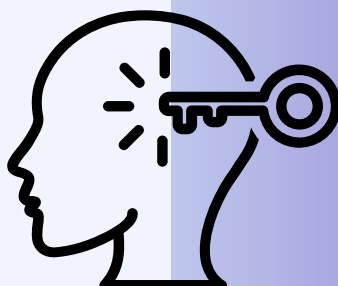
IMAGINATION

Enable students to explore new ideas and empathise with the thinking of others, without limitation or risk. (English, Sport and Arts subjects)



ENLIGHTENMENT

Equip students with the insight and determination to embrace new ideas, technology and innovation, enabling them to contribute to the ever-changing natural and physical world around them. (Mathematics, Computer Science and Natural Sciences subjects)



DIVERSITY

Provide students with the tools to respect and celebrate the great diversity of cultures, backgrounds and beliefs, within and beyond the School, whilst recognising that we have more in common than that which divides us. (Humanities, Languages and Social Sciences subjects)



Desiderata

GO PLACIDLY amid the noise

and the haste, and remember what peace there may be in silence. As far as possible, without surrender, be on good terms with all persons. Speak your truth quietly and clearly; and listen to others, even to the dull and the ignorant; they too have their story.

Avoid loud and aggressive persons; they are vexatious to the spirit. If you compare yourself with others, you may become vain or bitter, for always there will be greater and lesser persons than yourself.

Enjoy your achievements as well as your plans. Keep interested in your own career, however humble; it is a real possession in the changing fortunes of time.

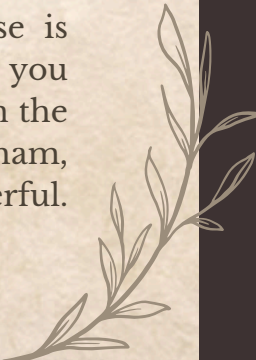
Exercise caution in your business affairs, for the world is full of trickery. But let this not blind you to what virtue there is; many persons strive for high ideals, and everywhere life is full of heroism. Be yourself. Especially do not feign affection. Neither be cynical about love; for in the face of all aridity and disenchantment, it is as perennial as the grass.

Take kindly the counsel of the years, gracefully surrendering the things of youth. Nurture strength of spirit to shield you in sudden misfortune. But do not distress yourself with dark imaginings. Many fears are born of fatigue and loneliness.

Beyond a wholesome discipline, be gentle with yourself. You are a child of the universe no less than the trees and the stars; you have a right to be here.

And whether or not it is clear to you, no doubt the universe is unfolding as it should. Therefore be at peace with God, whatever you conceive Him to be. And whatever your labors and aspirations, in the noisy confusion of life, keep peace in your soul. With all its sham, drudgery and broken dreams, it is still a beautiful world. Be cheerful. Strive to be happy.

by Max Ehrmann ©1927





Student Achievements

Have you got some news to share?
If so, please email Mrs Gross (jgross@cchs.co.uk) and attach a photo or logo, if applicable.

Congratulations to Prethika (13DNO), who achieved an A* in her A Level Tamil exam.

Well done, Prethika!

Congratulations!



Anika (7G) was awarded a Scout of the Year trophy for her leadership qualities and keeping up scout spirit through this year.

Congratulations, Anika!



Arrival at and departure from school

We continue to engage with local residents (First Avenue, Corporation Road, Swiss Avenue, Westfield Avenue and Elms Drive) concerning their experiences during student arrival and departure periods.

Further to my communications on this matter previously, I note below key points of information to support CCHS families:

- Chelmsford City Council provided the following about the use of Rectory Lane car park:

“Please be advised there is a standard five-minute grace period on all vehicles to allow the purchase of a pay and display ticket. Therefore, any vehicles that are in the car park for the purposes of dropping off and / or picking up should fall within that grace period.”

- As a result of the concerns raised by local residents regarding instances of inconsiderate and at times dangerous parking, South Essex Parking Partnership noted that their Parking Enforcement Team will be stepping up their patrols in the area.
- Our School Eco Committee is undertaking work, supported by the local authority, to explore how students travel to and from school, and how we could support both school families and the wider community with matters of travel, parking and congestion.
- Our Senior Leadership Team is working with local officials and local politicians on the matter of parking and congestion, and we have made suggestions to support this work, including the idea of creating a new entrance/exit point to the school site on the Chelmer Valley Road (east side of the campus).

Thank you, as ever, for your support in ensuring that we are mindful of local residents, as we work to keep people safe and relations cordial.

.....

Please be aware of your surroundings when dropping off and picking up students to and from school. The area directly outside our school, in Broomfield Road, is a very busy thoroughfare. A vehicle which is not parked safely can be dangerous for other vehicles, as can dropping off/picking up students in the buslane.



ROAD SAFETY

CCHS News this week...

MUSIC MARK 2025-26

Posted: 10th September 2025

Once again, the work and accomplishments of the wonderful CCHS Music Department have been recognised with the awarding of the **Music Mark 2025-2026**; a testament to our school's partnership with the Greater Essex Music Hub and the provision of music education across our school community. Many congratulations to Mr Lamberti, Mrs Clements, Mrs Gray, Mrs Mardi, Mrs Poole, Mrs Savage, Mrs Smart, Mrs Wheadon, Ms Abbott, Mr Cooper, Mr Barrett, Mr Drury, Mr Eaton, Mr Gadd, Mr French, Mrs Gross and Mrs Shepherd! The Arts - Chelmsford County High School for Girls

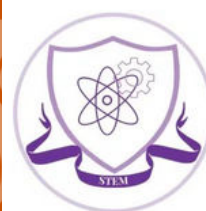


A-LEVEL COMPUTER SCIENCE NATIONAL RECOGNITION

Posted: 10th September 2025

Many congratulations to Rayana and Leanne, whose strong performances in their A-level Computer Science examinations in the summer, with AQA, have been recognised - they both feature in the top 100 nationally and are award-winners! We are delighted for Rayana and Leanne.

STEM & STEAM - Chelmsford County High School for Girls



GCSE ART NATIONAL RECOGNITION

Posted: 10th September 2025

Many congratulations to Eleanor, whose mark and grade in her GCSE Art examination in the summer has been recognised as one of the strongest in the country. The exam board, OCR, note that "Eleanor is one of the top performers this summer." We are delighted for Eleanor!

The Arts - Chelmsford County High School for Girls



YEAR 8 MEET THE TUTOR EVENING

Posted: 11th September 2025

We are looking forward to welcoming the parents of our Year 8 students later today for our Meet the Tutor Evening.

Pastoral - Chelmsford County High School for Girls

Academic | Girls School | Chelmsford County High School for Girls



This week in PSHE

YEAR GROUP	MONDAY 15 TH SEPTEMBER				PERIOD 1	
	A	C	F	G	H	S
7	Year 7 group activity					
8	FOMO and Internet safety					
9	Introduction to drug education					
10	KS3 to KS4 transition					
11	Self Defense	Risky behaviour				
12	Healthy eating					
13	UCAS preparation					



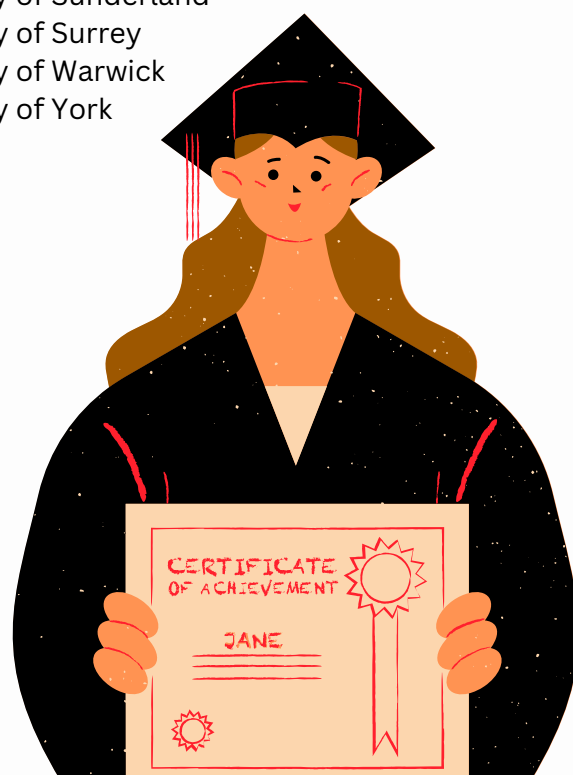
Course and University Destinations for Year 13 2025

Courses Placed

- Accounting and Finance
- Aerospace Electronic Engineering
- Aerospace Engineering with Pilot Studies
- Aerospace Engineering with professional placement
- Animation Production
- Applied Biomedical Science (NHS Placement)
- Biological Sciences
- Biological Sciences with Foundation
- Biological Sciences with Professional Placement
- Biomedical Engineering (with Industrial Placement)
- Biomedical Science
- Biomedical Science with Professional Experience (MSci)
- Business Management and Economics
- Chemical Engineering (with placement year)
- Chemistry with a year in industry
- Chemistry with International Placement
- Civil Engineering
- Classical Archaeology and Classical Civilisation
- Classics
- Clinical Pharmacology BSc
- Combined Honours in Social Sciences
- Computer Science
- Computer Science (Software Engineering)
- Computing Science Faster Route
- Costume Design and Making
- Criminal Justice and Criminology
- Cyber Security
- Dental Therapy and Hygiene
- Dentistry
- Diagnostic Radiography
- Diagnostic Radiography and Imaging
- Discrete Mathematics
- Economics
- Economics and Finance
- Economics and Politics
- Economics, Finance and Data Science
- Electronic and Information Engineering
- English
- English and Philosophy
- English Literature
- English Literature with a Placement Year
- English with Film Studies
- English/Politics (Equal)
- Film Studies (Including Foundation Year)
- Finance
- Finance and Financial Technology
- Finance, Accounting and Management with a Placement Year
- Fine Art with History of Art
- Forensic Science with a Year in Industry
- French and Linguistics
- Geography
- History
- History and Politics
- History of Art
- Human, Social, and Political Sciences
- International History and Politics
- International Relations
- Law
- Law with Philosophy
- Liberal Arts
- LLB Law
- LLB Law with Professional Placement
- Management
- Management with Marketing with work placement
- Mathematics
- Mathematics with Economics
- Mathematics with Economics (Placement Year)
- Mathematics with Management & Finance
- Mechanical Engineering
- Mechatronics and Robotics Engineering
- Medical Science
- Medicine
- Medicine and Surgery
- Modern and Medieval Languages
- Modern European Languages and History (with Year Abroad)
- Modern History and Politics
- Music and Music Technology
- Music and Sound Recording (Tonmeister)
- Music with Year Abroad
- Natural Sciences
- Osteopathy
- Paramedic Science
- Pharmacology with professional placement
- Pharmacy (Plymouth University campus)
- Pharmacy MPharm
- Pharmacy with a Preparatory Year
- Philosophy
- Philosophy, Politics and Economics (PPE)
- Physics (Study Abroad)
- Physiotherapy
- Politics and Italian
- Politics, Philosophy and Economics
- Popular Music Performance - Bass
- Psychology
- Psychology in Education BSc (Hons)
- Science Extended Degree leading to a BSc(Hons) Degree
- Sport and Exercise Psychology (with placement year)
- Theology, Religion, and Philosophy of Religion
- Veterinary Medicine and Surgery
- Veterinary Physiotherapy

University Destination

- Anglia Ruskin University
- Arts University Bournemouth
- Aston University, Birmingham
- Buckinghamshire New University
- Cardiff University
- City St George's, University of London
- Durham University
- Imperial College London
- Institute of Contemporary Music Performance
- King's College London, University of London
- Kingston University
- Lancaster University
- London School of Economics and Political Science, University of London
- Loughborough University
- Newcastle University
- Nottingham Trent University
- Queen Mary University of London
- Royal Holloway, University of London
- SOAS University of London
- St George's (City St George's, University of London)
- Swansea University
- The University of Edinburgh
- UCL (University College London)
- University of Bath
- University of Birmingham
- University of Bristol
- University of Cambridge
- University of East Anglia UEA
- University of Essex
- University of Exeter
- University of Glasgow
- University of Huddersfield
- University of Hull
- University of Kent
- University of Leeds
- University of Leicester
- University of Liverpool
- University of Manchester
- University of Nottingham
- University of Oxford
- University of Plymouth
- University of Reading
- University of Sheffield
- University of Southampton
- University of Staffordshire
- University of Suffolk
- University of Sunderland
- University of Surrey
- University of Warwick
- University of York





Elevate Education's Autumn Term

Parent Webinar Series

Elevate Education delivers high-impact workshops to our students that help to develop their study skills, motivation, and exam preparation. Over the next term, you're invited to join their parent webinar series, where you can help support your child at home by reinforcing the skills they're learning at school.

How to Get (And Keep!) Your Child Motivated

16th September 6:00pm (BST)

How You Can Help Your Child Manage Their Time

30th September 6:00pm (BST)

How You Can Help Your Child Set Up for Success in Exams

14th October 6:00pm (BST)

How You Can Help Improve Your Child's Memory

18th November 6:00pm (GMT)

How You Can Build Resilience in Your Child

2nd December 6:00pm (GMT)

How to Help Your Child Alleviate Stress

16th December 6:00pm (GMT)

Register today at: <https://go.elevateeducation.com/ukschoolwebinar>

Parents'
Association

Bubble Tea Sale



£5

Bubble Tea
BOBA FRESH



Green Apple Iced Fruit Tea
With Strawberry Pops



Mango Iced Fruit Tea
With Lychee Pops



Watermelon Iced Fruit Tea
With Coconut Jelly



Brown Sugar Boba Milk Tea
With Tapioca

@bobafresh_bubbletea



Friday 19th September
Lunchtime in the hall

Made by 'Boba Fresh' in Chelmsford

Cash or Card accepted

ORGANISED BY
CCHS PA



AUTUMN DISCO

PRIZES

YEARS 7-9

WITH DJ JOJO

GAMES

10TH OCTOBER

7-9PM

£8 ON PARENTPAY
OR £10 ON ARRIVAL

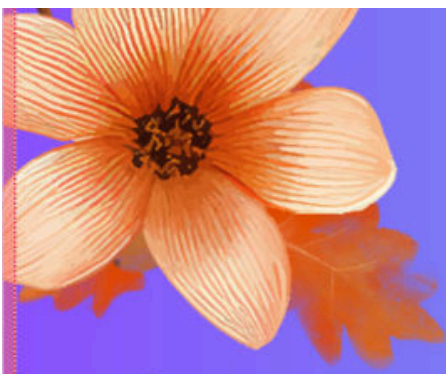
PHOTOPOD

THINGS TO BUY

WAFFLES

AUTUMN FANCY DRESS (OPTIONAL) - PRIZE FOR BEST OUTFIT!

CASH & CARD ACCEPTED





**ADULT &
CHILDRENS' CLOTHING**

**ORGANISED BY
CCHS
PARENTS'
ASSOCIATION**



**THE WEIGHT OF THE CLOTHING
MAKES MONEY FOR THE SCHOOL**

**REDUCE
REUSE
RECYCLE**

HOUSE CLOTHING COMPETITION!!



HANDBAGS

29TH SEPTEMBER

8-9AM



SCARVES

IN THE DINING AREA



HATS



BELTS

START SAVING UNWANTED CLOTHES NOW! 😊

**HELP YOUR HOUSE WIN
BY HAVING THE
GREATEST NUMBER OF
BAGS FULL OF
CLOTHING**



PAIRED SHOES



**CLOTHES BAGS WILL BE
DELIVERED TO YOUR
TUTOR GROUPS AND
EXTRA BAGS WILL BE
AVAILABLE FROM THE
FRONT OFFICE**



**FASHION
ACCESSORIES**





Chelmsford County High School for Girls

Keep on swimming!

Context

The CCHS swimming pool was built in the 1960s, partly from funds raised by CCHS families. Dedicated upgrading and maintenance work over the years has ensured that the pool has served generations of students and young people across the Chelmsford community.

At the moment, our pool supports the PE curriculum for our 1,162 students, as well as nearly 200 pupils from five local primary schools, and nearly 600 young people from the wider community who use our pool with clubs.

Our swimming pool is truly a community pool.

Goal

Now is the time to modernise this important community resource to preserve it for future generations of students, pupils and young people. We are asking for your support now, just as the CCHS community rallied in the 1960s to ensure a pool was built, to help us achieve this important goal.

Fundraising

We estimate that the pool will require up to £250,000 over the next two years to bring it back to a suitable condition to support swimming in our community for the foreseeable future.

Our immediate need is to replace our aged boiler and gas pipework, which will cost approximately £35,000.

We will be organising some sponsored events and other fundraising activities, however if you are able to support us with any amount, we have a fundraising page available at <https://www.totalgiving.co.uk/appeal/Keep-CCHS-Swimming>

