



Inspiring the leaders of tomorrow to think for themselves and act for others

MESSAGE FROM MR LAWLOR

In the end (and thankfully), the expected wintery weather was not quite so wintery for us, which meant a fine time was had at the CCHS Parents' Association Winter Fayre on Saturday. Good cheer, tasty food, fun & games, arts & crafts, live music and a lovely family atmosphere. Thank you to all members of the CCHS community, staff, students, parents and friends, who came to enjoy and support this important event for the school.

Particular and fulsome thanks to the magnificent CCHS Parents' Association. So much work goes into the planning, set up and running of big events like this. We are tremendously grateful to all the PA members and their families, who did so much to ensure another fun, festive and successful Winter Fayre.

Remembering that the monies raised through the Winter Fayre will be invested in resources, kit and projects that will directly benefit our students is wonderful. Please do look at the Parents' Association section of the school website for a flavour of their great work and how you could get involved.

Parents' Association – Chelmsford County High School for Girls





CCHS Ethos

We amplify, and so fortify, our School vision and aims, as well as pursue links between subject disciplines, to cultivate core values, which direct and drive our work: **citizenship, distinction, challenge, duty, imagination, enlightenment and diversity**. This ethos forms our covenant with the CCHS community:

- Mission *A progressive grammar school community, committed to excellence in girls' education and empowerment.*
- Vision *Developing the leaders of tomorrow – **citizenship**: inspire future citizens to think for themselves and to act for others.*
- Aim *The pursuit of excellence – **distinction**: provide students with an outstanding education, with students doing their best in all endeavours.*
- Aim *Fulfilling individual potential – **challenge**: motivate students to acquire new knowledge & understanding and stimulate them to develop new skills & attributes.*
- Aim *Contributing to the community – **duty**: ensure students conduct themselves with civility and compassion at all times, supporting each other and looking beyond themselves.*
- *English, Sport and Arts subjects – **imagination**: enable students to explore new ideas and empathise with the thinking of others, without limitation or risk.*
- *Mathematics, Computer Science and Natural Sciences subjects – **enlightenment**: equip students with the insight and determination to embrace new ideas, technology and innovation, enabling them to contribute to the ever-changing natural and physical world around them.*
- *Humanities, Languages and Social Sciences subjects – **diversity**: provide students with the tools to respect and celebrate the great diversity of cultures, backgrounds and beliefs, within and beyond the School, whilst recognising that we have more in common than that which divides us.*



D e s i d e r a t a

GO PLACIDLY amid the noise

and the haste, and remember what peace there may be in silence. As far as possible, without surrender, be on good terms with all persons. Speak your truth quietly and clearly; and listen to others, even to the dull and the ignorant; they too have their story.

Avoid loud and aggressive persons; they are vexatious to the spirit. If you compare yourself with others, you may become vain or bitter, for always there will be greater and lesser persons than yourself.

Enjoy your achievements as well as your plans. Keep interested in your own career, however humble; it is a real possession in the changing fortunes of time.

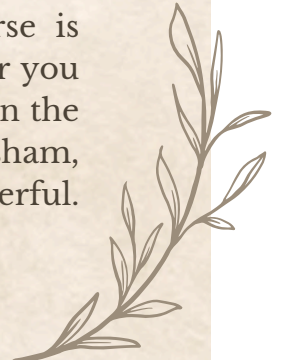
Exercise caution in your business affairs, for the world is full of trickery. But let this not blind you to what virtue there is; many persons strive for high ideals, and everywhere life is full of heroism. Be yourself. Especially do not feign affection. Neither be cynical about love; for in the face of all aridity and disenchantment, it is as perennial as the grass.

Take kindly the counsel of the years, gracefully surrendering the things of youth. Nurture strength of spirit to shield you in sudden misfortune. But do not distress yourself with dark imaginings. Many fears are born of fatigue and loneliness.

Beyond a wholesome discipline, be gentle with yourself. You are a child of the universe no less than the trees and the stars; you have a right to be here.

And whether or not it is clear to you, no doubt the universe is unfolding as it should. Therefore be at peace with God, whatever you conceive Him to be. And whatever your labors and aspirations, in the noisy confusion of life, keep peace in your soul. With all its sham, drudgery and broken dreams, it is still a beautiful world. Be cheerful. Strive to be happy.

by Max Ehrmann ©1927





Student Achievements

Have you got some news to share?
If so, please email Mrs Gross (jgross@cchs.co.uk) and attach a
photo or logo, if applicable.

Olivia, 12PKU, was selected to go on a BFI (British Film Institute) course earlier this month. It took place over four full weekends and involved learning about film-making from industry professionals.

As part of a team, she had to create and edit her own short film and was able to use professional actors whilst filming.

Well done, Olivia!



Chelmsford County High School for Girls

Christmas Concert

Tickets are on sale via Parent Pay from
Friday 29th November 4pm

Tickets are £10 each and limited to two
per student per night

Our Athletes of the Week are Sophie, (13MCT), Gracie, (12DNO), Alexa, (13FSE) and Kesia (11A).

They went to Birmingham to represent the school in the National Swimming Finals, where they swam in the Commonwealth Games pool.

The girls placed 10th in Freestyle and 17th in Medley out of the entire country, which was a phenomenal achievement.

Congratulations!



Please follow our CCHS PE Department Twitter account to keep up to date with our sporting news

@CCHS4GPE



Please follow our PE Instagram account for everything PE & Sport.

@pe_cchs



Next week in PSHÉ – Thursday 5th December – Period 3.
Year's 7 to 13 – TA1 discussions with form tutors.

Barracudas Activity Day Camps

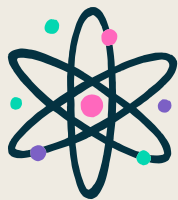
The UK's favourite school holiday camp for children aged 4½ to 14 years, will be open at our school in 2025.

80+ exciting activities including arts and crafts, sports, teambuilding and much more! They also have specialist activities including archery and motorsports offered at the Easter and summer camps.

Ofsted registered, confidence building camps with high staff to child ratios.

Save up to £120 with their Early Booking offer and your exclusive code!

Book now at www.Barracudas.co.uk or call 01480 467 567. NB You can choose to take advantage of their Easy Payment Plan (EPP) – a flexible, interest-free option designed to help families spread the cost of the camps over manageable monthly instalments. You can also choose to pay with Tax-Free childcare or Childcare Vouchers.



Science Live -A Level Physics Lecture at Emmanuel Centre, London



On Wednesday 13th November, Years 12 and 13 had the opportunity to attend a Science Live conference at the Emmanuel Centre, London. The event was a series of lectures about different Physics topics as well as a session on examination and revision techniques lead by an examiner to help prepare for upcoming examinations. The event began at 10:30 am, and after a long bus journey we arrived and took our seats in the auditorium.

The first speaker was Dr Helen Czerski who studies the physics behind bubbles amongst the breaking waves in the ocean. Her work helps to find information on how the gas content in the ocean is changing over time and she took us along on a virtual replica of her recent voyage into the waters of Greenland. After a short break, we were then taken on an exploration of fundamental physics involving the mystery of proton decay and quarks (the building blocks of atoms).

$$M = Gm$$

$$g = \frac{F}{m}$$

$$U = \frac{W_{\text{or}}}{m} = -\frac{1}{m} \int_{\infty}^r F \cdot dr$$

$$\Phi_{\Omega} = \int_{\Omega} \Omega$$

Point mass $g = \frac{Gm}{r^2} \hat{r}$

$$\Phi_G = \int_S g \cdot dA$$

$$\Delta \varphi = -\frac{W}{m} = -\frac{1}{m} \int_{\infty}^r F \cdot dr$$

$$g = -\frac{GM}{r^2} \hat{r} - (\omega \times r) \sin \phi$$

$$\Omega = -\frac{1}{m} \int_{\infty}^r F \cdot dr = -\int_{\infty}^r \Omega \cdot dA$$

$$g = -\nabla U$$

$$V = \sqrt{\frac{2GM}{r}}$$

$$g = \frac{F}{m}$$

$$U = \frac{W_{\text{or}}}{m} = -\frac{1}{m} \int_{\infty}^r F \cdot dr$$

$$\Phi_{\Omega} = \int_{\Omega} \Omega$$

Point mass $g = \frac{Gm}{r^2} \hat{r}$

$$\Phi_G = \int_S g \cdot dA$$

$$\Delta \varphi = -\frac{W}{m} = -\frac{1}{m} \int_{\infty}^r F \cdot dr$$

$$g = -\frac{GM}{r^2} \hat{r} - (\omega \times r) \sin \phi$$

$$\Omega = -\frac{1}{m} \int_{\infty}^r F \cdot dr = -\int_{\infty}^r \Omega \cdot dA$$

$$g = -\nabla U$$

$$V = \sqrt{\frac{2GM}{r}}$$

Professor Frank Close introduced us to the unsolved question of why atoms are so balanced in force and how, through advanced neutrino observation 1000m underground in Japan. The next talk by examiner Michelle Oldfield who talked us through the importance of active recall and flashcard repetition when revising for exams. She walked us through using command words in questions and how to respond to different types. Just before lunch, Dr Jessica Wade took to the stage with a presentation on Quantum Computers and the use of Chiral molecular materials in upcoming electronics.

Dr Wade also made us aware of international year of Quantum Science and Technology happening in 2025!

$$M = Gm$$

$$g = \frac{F}{m}$$

$$U = \frac{W_{\text{or}}}{m} = -\frac{1}{m} \int_{\infty}^r F \cdot dr$$

$$\Phi_{\Omega} = \int_{\Omega} \Omega$$

Point mass $g = \frac{Gm}{r^2} \hat{r}$

$$\Phi_G = \int_S g \cdot dA$$

$$\Delta \varphi = -\frac{W}{m} = -\frac{1}{m} \int_{\infty}^r F \cdot dr$$

$$g = -\frac{GM}{r^2} \hat{r} - (\omega \times r) \sin \phi$$

$$\Omega = -\frac{1}{m} \int_{\infty}^r F \cdot dr = -\int_{\infty}^r \Omega \cdot dA$$

$$g = -\nabla U$$

$$V = \sqrt{\frac{2GM}{r}}$$

$$g = \frac{F}{m}$$

$$U = \frac{W_{\text{or}}}{m} = -\frac{1}{m} \int_{\infty}^r F \cdot dr$$

$$\Phi_{\Omega} = \int_{\Omega} \Omega$$

Point mass $g = \frac{Gm}{r^2} \hat{r}$

$$\Phi_G = \int_S g \cdot dA$$

$$\Delta \varphi = -\frac{W}{m} = -\frac{1}{m} \int_{\infty}^r F \cdot dr$$


$$g = -\frac{GM}{r^2} \hat{r} - (\omega \times r) \sin \phi$$

$$\Omega = -\frac{1}{m} \int_{\infty}^r F \cdot dr = -\int_{\infty}^r \Omega \cdot dA$$

$$g = -\nabla U$$

$$V = \sqrt{\frac{2GM}{r}}$$

After a delicious packed lunch, we settled down to be thrown back in time by Dr Emma Chapman and her work on the beginnings of the galaxies and stars. Dr Chapman showed the techniques that they use to differentiate the ages of the oldest galaxies using SKA (Square Kilometre Array) to detect the stretched radio waves from 13.2bn years ago

$$M = Gm$$


$$\phi_G =$$

$$\Delta\phi =$$

$$g = \frac{F}{m} \quad g = -\frac{GM}{r^2} \hat{r}$$

$$U = -\frac{W_{\text{or}}}{m} = -\frac{1}{m} \int_{\infty}^r F \cdot dr$$

$$\Phi_{\Omega} = \int_S \Omega \cdot dA$$

Point mass $g = \frac{Gm}{r^2} \hat{r}$



$$= \int_S g \cdot dA$$

$$= -\frac{W}{m} = -\frac{1}{m} \int_{r_1}^{r_2} F \cdot dr$$

$$= -(1/r^2 |r| \sin \phi) \hat{a}_{\phi}$$

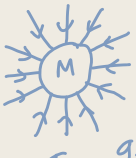
ϕ zenith angle relative

$$\int_{\infty}^r F \cdot dr = -\int_{\infty}^r g \cdot dr$$

$$dA \quad g = -\nabla U$$

$$V = \sqrt{\frac{2Gm}{r}}$$

The final talk was from Professor Jim Al-Khalili about the story of time in relativity physics and philosophy. He explored the different theories of what time is and the understanding of the direction and pre-determined destination time has.

$$M = Gm$$


$$\phi_G =$$

$$\Delta\phi =$$

$$g = \frac{F}{m} \quad g = -\frac{GM}{r^2} \hat{r}$$

$$U = -\frac{W_{\text{or}}}{m} = -\frac{1}{m} \int_{\infty}^r F \cdot dr$$

$$\Phi_{\Omega} = \int_S \Omega \cdot dA$$

Point mass $g = \frac{Gm}{r^2} \hat{r}$



$$= \int_S g \cdot dA$$


$$\phi = -\frac{W}{m} = -\frac{1}{m} \int_{r_1}^{r_2} F \cdot dr$$

$$= -(1/r^2 |r| \sin \phi) \hat{a}_{\phi}$$

ϕ zenith angle relative

$$\int_{\infty}^r F \cdot dr = -\int_{\infty}^r g \cdot dr$$

$$dA \quad g = -\nabla U$$

$$V = \sqrt{\frac{2Gm}{r}}$$


After a long day of lectures and learning, we returned to the coach to reflect on the new information and areas of physics that we had become aware of as well as the newly opened paths for the future.

By Martha H (12AGO)

ARTIST OF THE WEEK



ARTIST OF THE WEEK- Cordelia in Year 12 for her puppet. A great response to Jim Henson. Looking forward to seeing her film creation next week!



Bebras Challenge

At the end of October, 180 students from Year 7 and 31 students from the Sixth Form took part in the Bebras Challenge, which aims to introduce students to computational thinking, and consists of a number of interactive challenges that must be completed in short time windows. Bebras is Lithuanian for beaver, which is a very common animal in Lithuania. The competition was named by the founders of the International Bebras Challenge after the hard-working, intelligent and lively beaver.

Congratulations to all students who took part! A total of 62 students achieved gold awards and qualified for the follow-on round.

The highest score in the Sixth Form was achieved by Josma. Impressively, nine Year 7 students achieved full marks, placing them in the top 1% of students nationally. These students are Layla, Molly, Ishita, Syeda, Iris, Elizabeth, Anayah, Aarya and Charlotte. Well done to all!

The UK Bebras Challenge is organised by the Raspberry Pi Foundation and delivered in partnership with the University of Oxford.



Dear CCHS Community,

RE: Arrival at and departure from school

I have received feedback from local residents about their experiences during periods when students are arriving at and departing from school. Each week, in our Friday bulletin, we include a reminder about the importance of road safety at these times. Local residents have raised associated issues, with some parents parking inappropriately, e.g. across driveways, and dangerously, e.g. on footpaths.

CCHS has been part of this local community since 1907 and our relationships with and respect for our local community are very important to us, as I know they will be for you. Clearly we are a big school, as all the other local schools are. You may have noticed that CCHS senior staff are out on gate duty each morning and afternoon to ensure the safety of students as they leave, board buses and coaches, etc.

I ask for your continued vigilance and co-operation, please, to ensure that if you are dropping off or collecting your daughter, you remain mindful of the local residents around the school, including First Avenue, Corporation Road, Swiss Avenue, Westfield Avenue and Elms Drive, please.

Thank you in advance for your support with this – it is appreciated.

Yours faithfully,

Mr Lawlor.

.....

Please be aware of your surroundings when dropping off and picking up students to and from school. The area directly outside our school, in Broomfield Road, is a very busy thoroughfare. A vehicle which is not parked safely can be dangerous for other vehicles, as can dropping off/picking up students in the buslane.



**ROAD
SAFETY**

On CCHS socials this week...



CCHS @CCHS4G · Nov 25

We are looking forward to this year's Dance Show. The Dance Officials and all those involved, students and staff, have worked hard to rehearse and prepare for what will be another set of tremendous performances.



CCHS @CCHS4G · Nov 26

"National Linguistics Day is a new focal point in the year to get people thinking, talking and learning about the science of language. It is part of Linguistics HQ, a broader initiative aimed at sparking curiosity about linguistics."

ciol.org.uk/national-lingu...



CCHS @CCHS4G · Nov 26

On National Linguistics Day, a group of CCHS KS3 students attended a GCHQ webinar to learn about how languages could help them in their future careers, putting their German skills to the test, decoding encrypted messages to analyse intercepted communications.

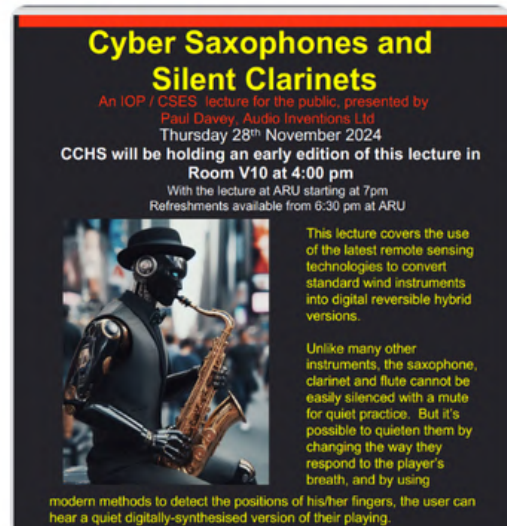


CCHS @CCHS4G · Nov 26

We are delighted to be hosting the Institute of Physics & Chelmsford Science and Engineering Society early edition lecture this week.

cchs.co.uk/extra-curricul...

cchs.co.uk/academic/the-c...



twitter.com/CCHS4G



[instagram.com/cchs4g/](https://www.instagram.com/cchs4g/)



[facebook.com/cchsessex](https://www.facebook.com/cchsessex)



[youtube.com/@chelmsfordcountyhighschool2697](https://www.youtube.com/@chelmsfordcountyhighschool2697)



WINTER FAYRE

THANK YOU

A huge thank you to everyone that helped make the Winter Fayre a success.

We couldn't do it without you;
donating, volunteering, making sandwiches,
baking, wrapping, shopping, singing,
helping at the Fayre and enjoying all it
offered.

Valuable funds were raised for the school

Wishing you all a wonderful festive season



GRAMMATICUS PA CHOIR *CHRISTMAS CONCERT*




SUNDAY DECEMBER 8TH AT
3PM



CCHS SCHOOL HALL

We are raising funds for the CCHS Parents Association so please come along and support us. It will also be a great way to see if you would like to join the choir in the future – we are always keen for new members!

Our programme will be varied from traditional to modern ,all with a Christmas theme, and will include some carols for audience participation. We always have fun at our concerts and guarantee we will get you into the Christmas spirit!



**TICKETS ARE £10 FOR ADULTS AND £5 FOR AGE
18 AND UNDER.**

**AVAILABLE ON THE DOOR WITH CASH OR BY
CONTACTING SARAH RAYBOULD ON
SRAYBOULD@HOTMAIL.COM**



Autumn Term Parent Support Series



Free Parent Webinars

Join us and Elevate Education for FREE 60- minute webinars designed to help you support your child's studies at home.

[Click here to Register](#)

In the Autumn Term, we'll cover:

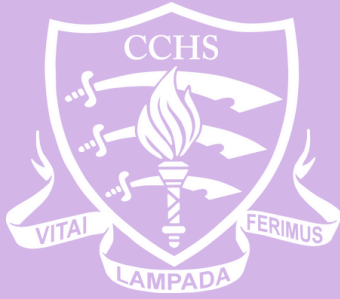
How You Can Build Resilience in Your Child

- 3rd December @6:00pm

How to Help Your Child Alleviate Stress

- 17th December @6:00pm





CCHS PARENTS' ASSOCIATION

The PA are pleased to announce that
the winners of the Wishlist Lottery are:

October

- 1st Mr P.J. Lloyd
- 2nd Mr & Mrs G. Burman
- 3rd Ancouta Ban

November

- 1st Mr J. Patel
- 2nd Mr D. Bhanji
- 3rd Mrs L.G. Heighton

December

- Xmas Prize Mr A.S. Cena
- 1st Prize Dr B.R. Thomas
- 2nd Prize Mr & Mrs D.M. Saxon
- 3rd Prize Mr S. Kistapur

Cheques have been given out at school. Thank you for
continuing to support the CCHS PA Wishlist Lottery.



Chelmsford County High School for Girls

Keep on swimming!

Context

The CCHS swimming pool was built in the 1960s, partly from funds raised by CCHS families. Dedicated upgrading and maintenance work over the years has ensured that the pool has served generations of students and young people across the Chelmsford community.

At the moment, our pool supports the PE curriculum for our 1,162 students, as well as nearly 200 pupils from five local primary schools, and nearly 600 young people from the wider community who use our pool with clubs.

Our swimming pool is truly a community pool.

Fundraising

We estimate that the pool will require up to £250,000 over the next two years to bring it back to a suitable condition to support swimming in our community for the foreseeable future.

Our immediate need is to replace our aged boiler and gas pipework, which will cost approximately £35,000.

We will be organising some sponsored events and other fundraising activities, however if you are able to support us with any amount, we have a fundraising page available at <https://www.totalgiving.co.uk/appeal/Keep-CCHS-Swimming>

Goal

Now is the time to modernise this important community resource to preserve it for future generations of students, pupils and young people. We are asking for your support now, just as the CCHS community rallied in the 1960s to ensure a pool was built, to help us achieve this important goal.

