

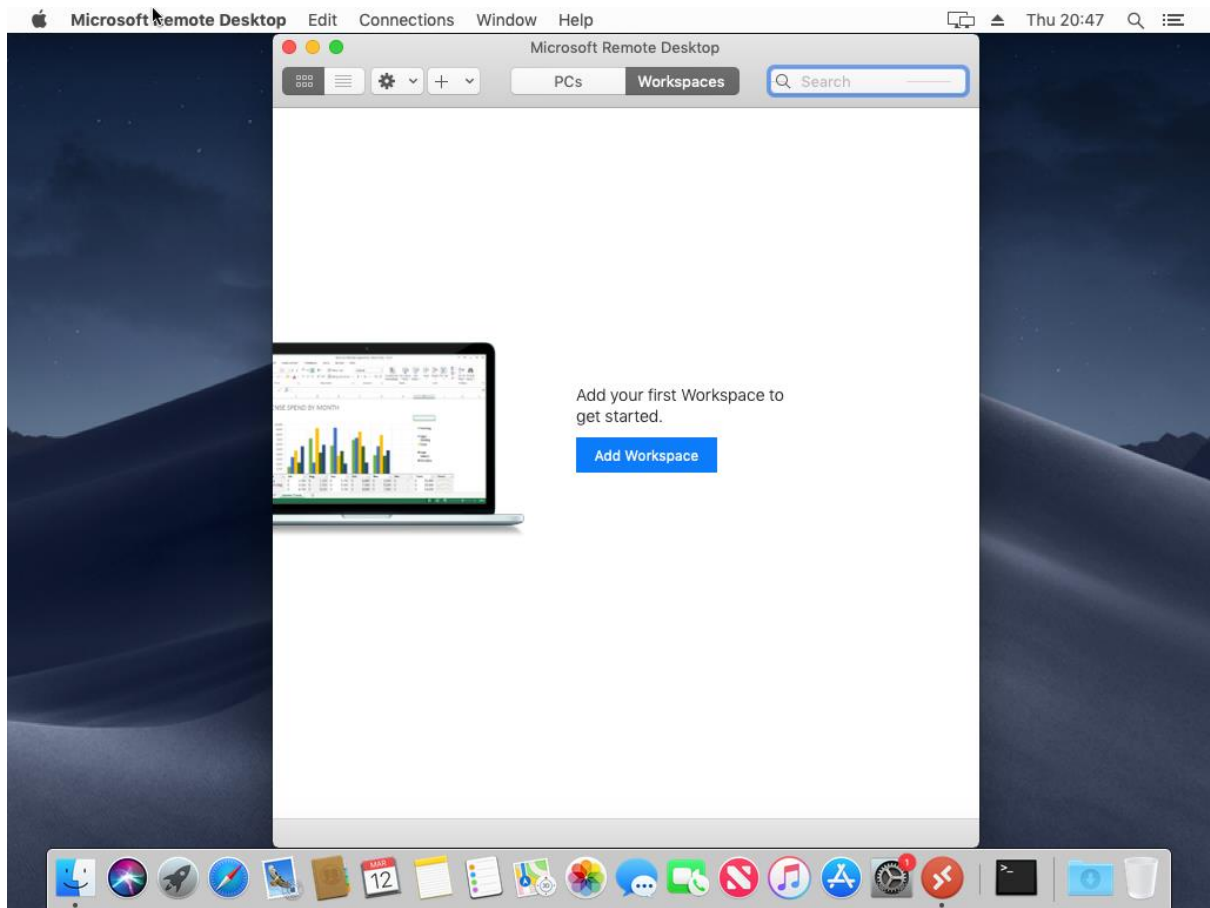
MAC Remote Access Instructions for Remote Desktop 10 – Updated August 2020

This has been tested on a MAC running Mojave operating system.

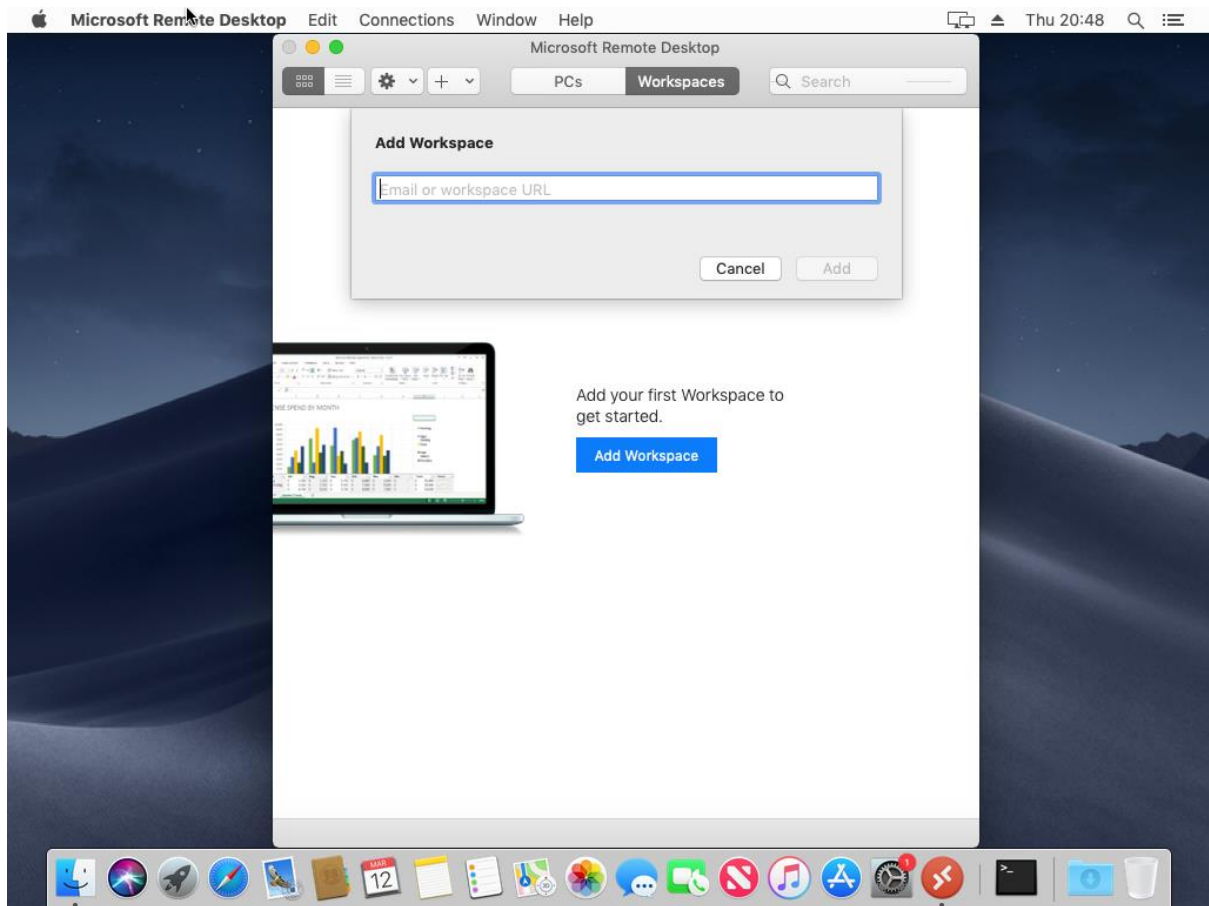
Download and Install 'Microsoft Remote Desktop 10' from the Mac store



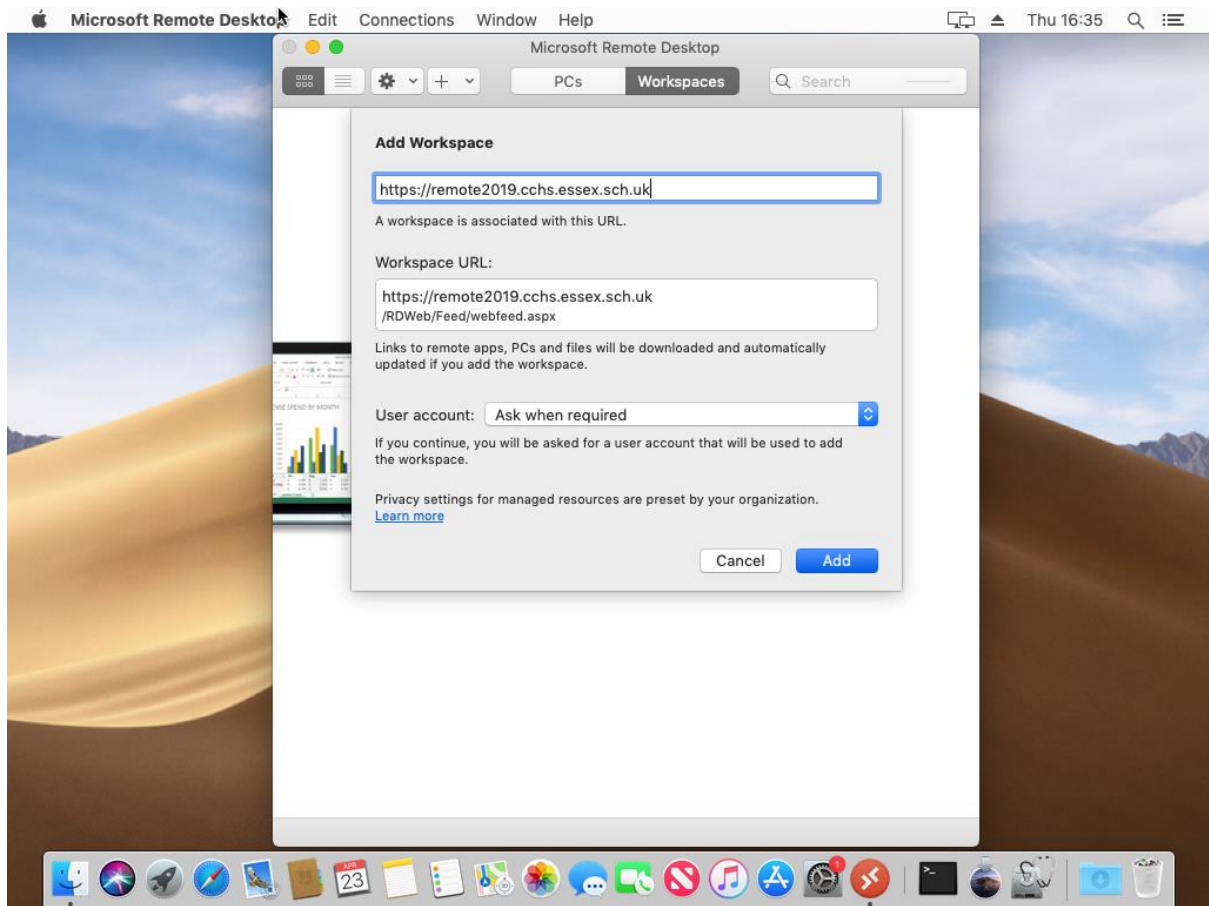
Once downloaded, open it up



Click on Workspaces then, Add Workspace.

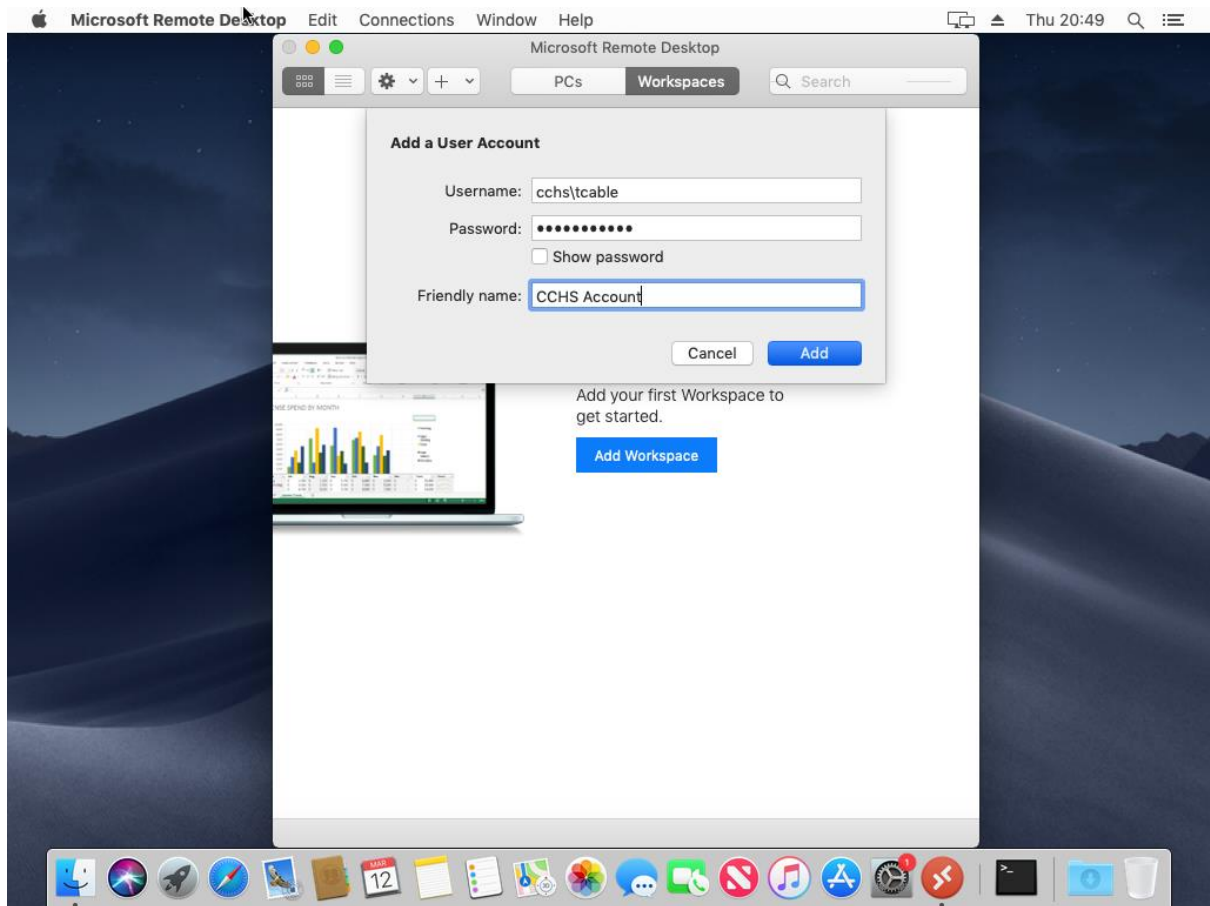


Enter the 'URL or Email Address' as <https://remote2019.cchs.essex.sch.uk>

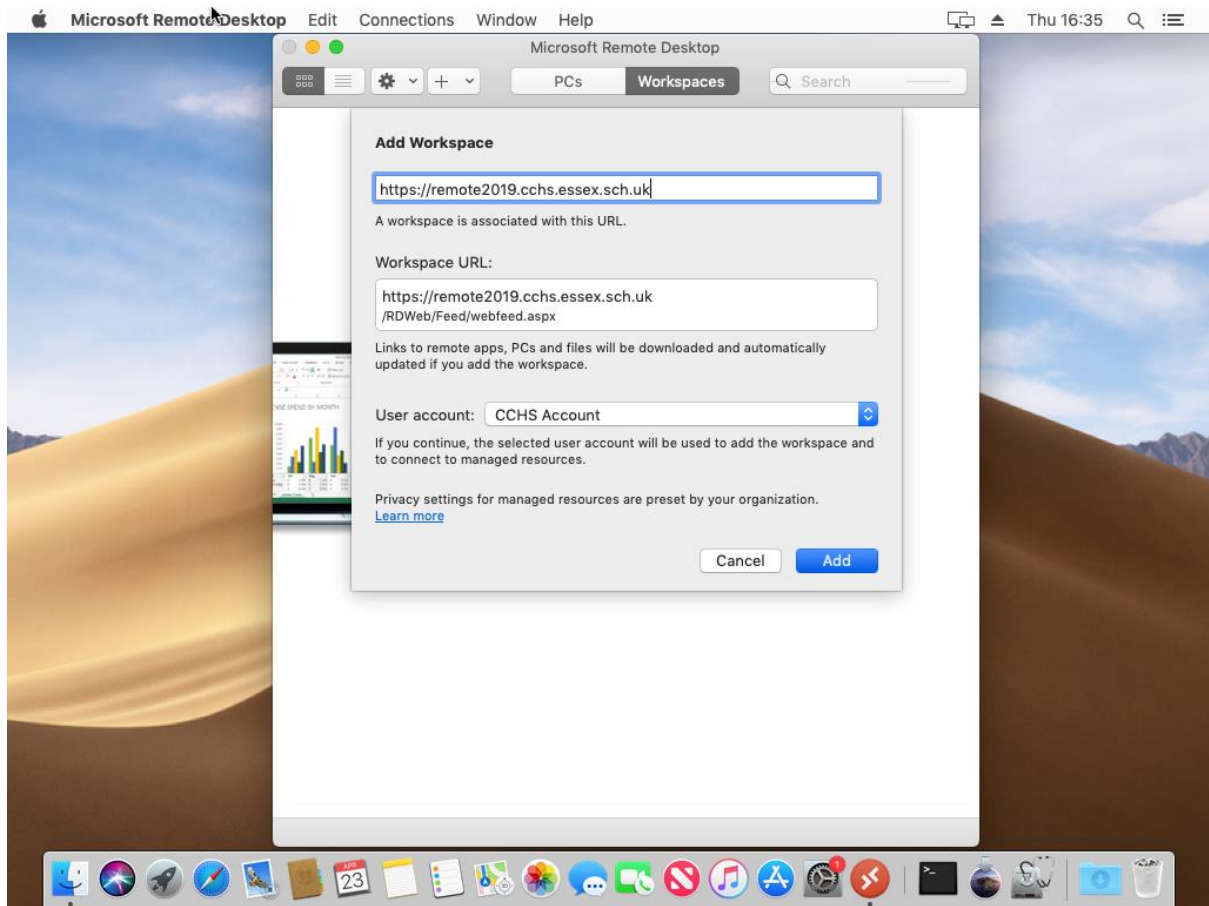


This should find the settings automatically, as per the above screenshot.

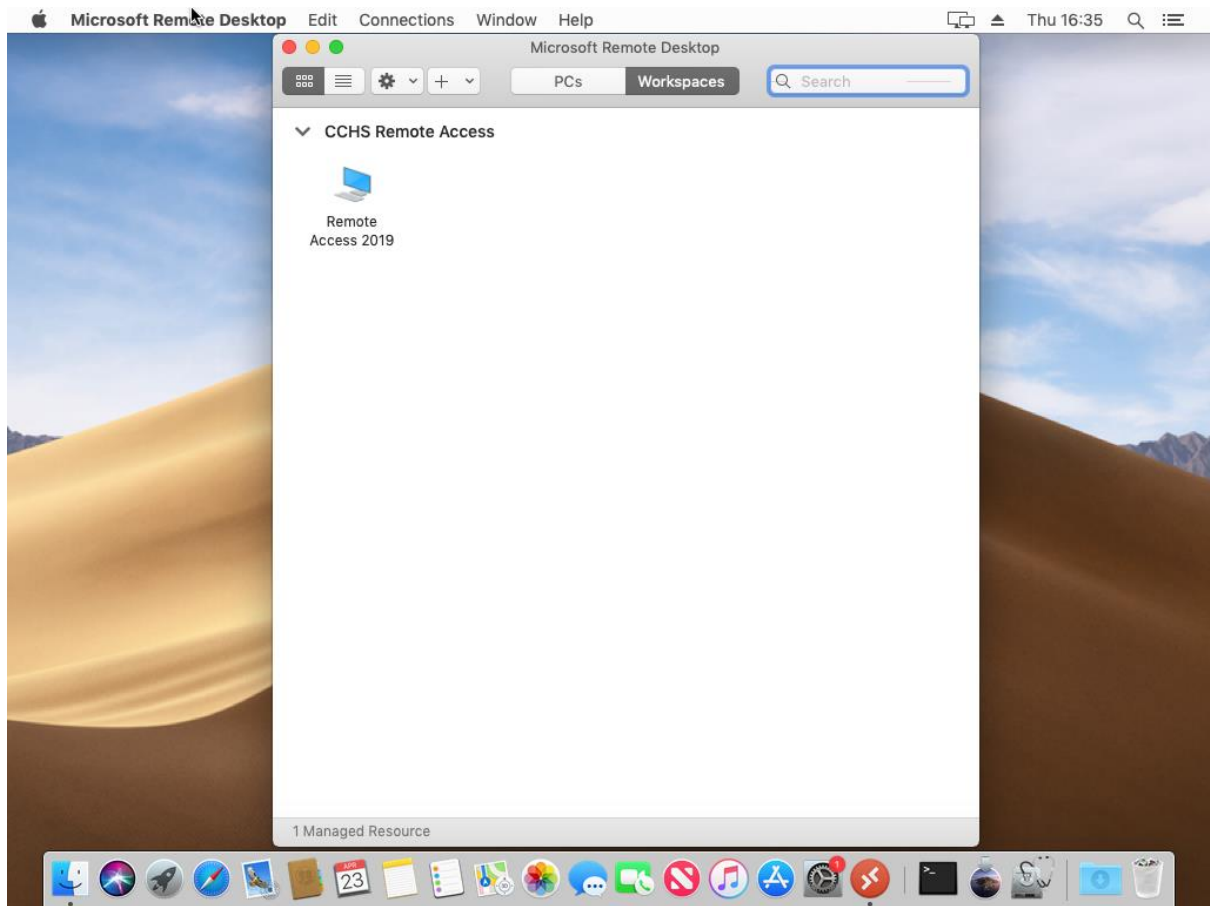
Click on the User Account drop down, and select 'Add User Account'



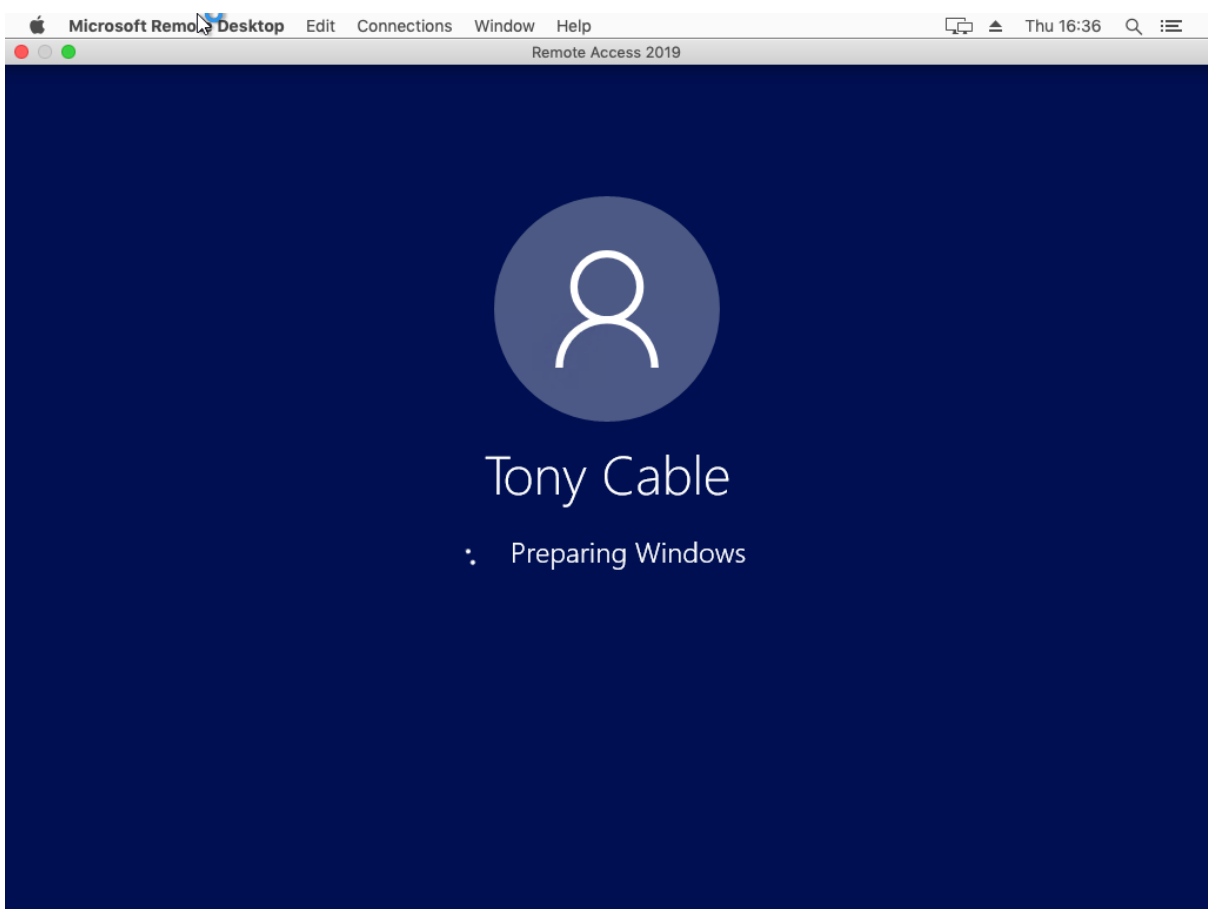
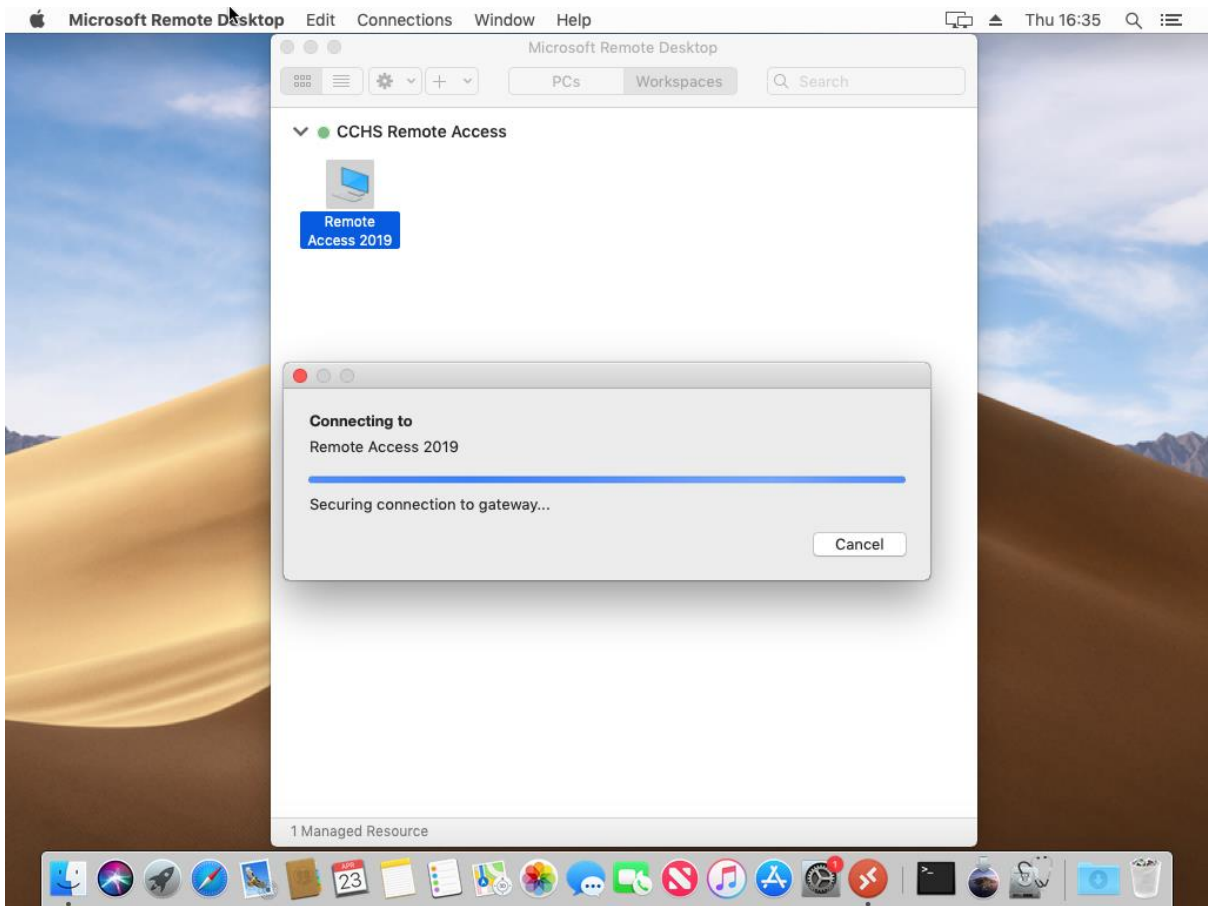
Fill out the user details as following, substituting in your details.

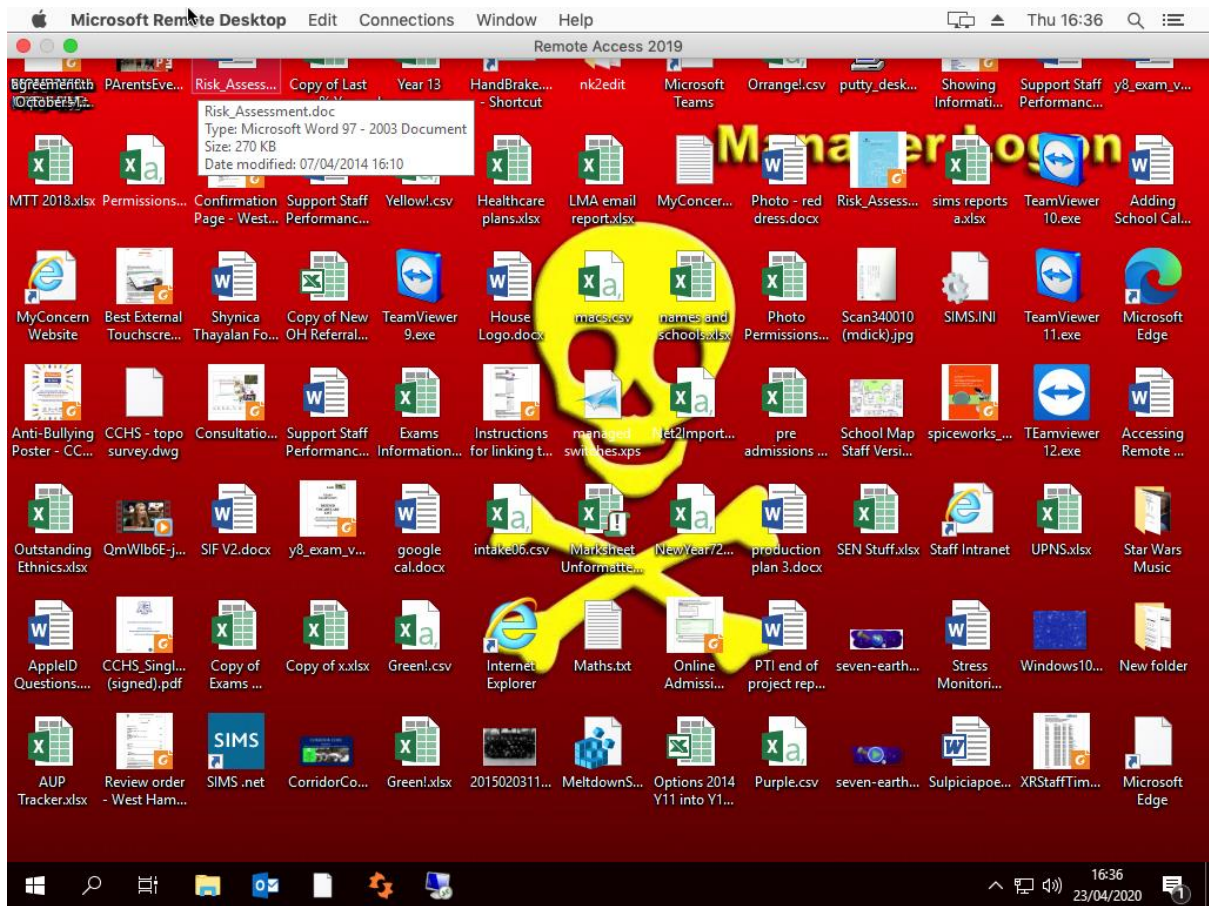


Click on Add



Double click on Remote access, then remote desktop should load.





Please remember, that once you are logged into remote access, the default keyboard is a windows layout, rather than a MAC layout. Some of the keys may be in a different position as labelled on the MAC keyboard.